

TASMANIAN PLANNING COMMISSION

Tasmanian Planning Scheme - Central Highlands

Draft amendment 2023-03

1. Apply the Rural Zone to all parcels and road reservations as shown below in Figures 1 to 9:

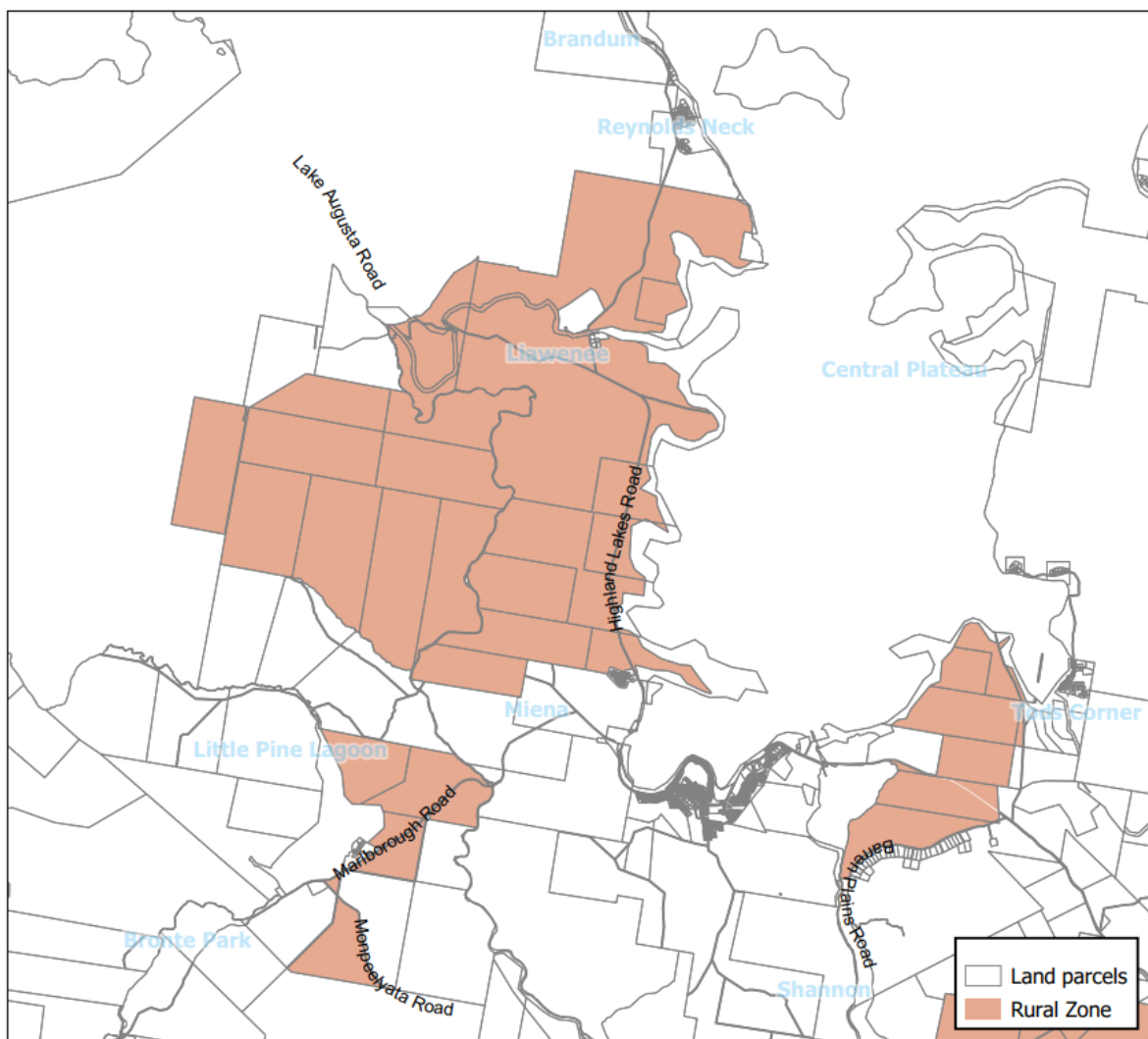


Figure 1 - Apply the Rural Zone to land at Liaweenee, Tods Corner, Little Pine Lagoon and Bronte Park.

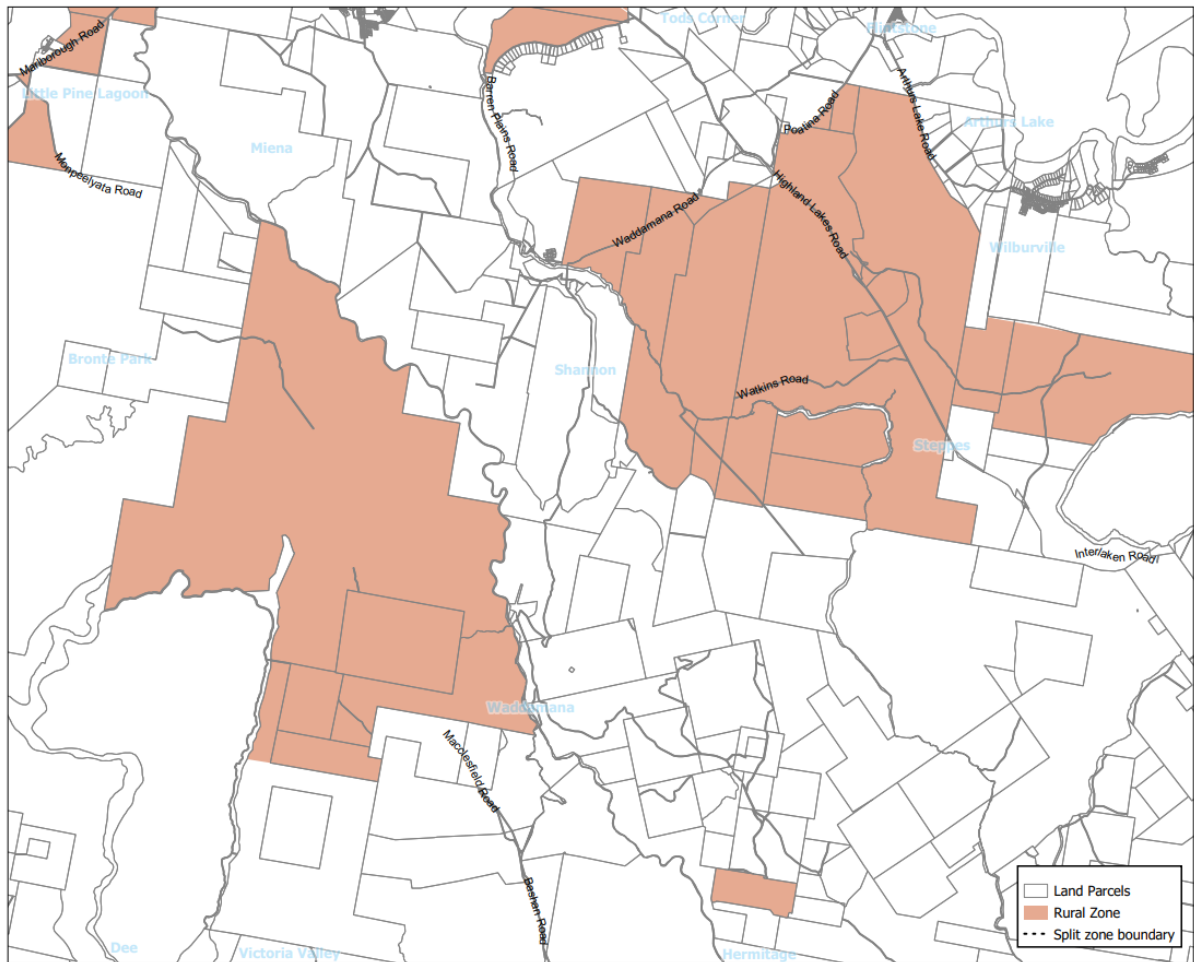


Figure 2 - Apply the Rural Zone to land at St Patricks Plains, Steppes, Waddamana and Hermitage.

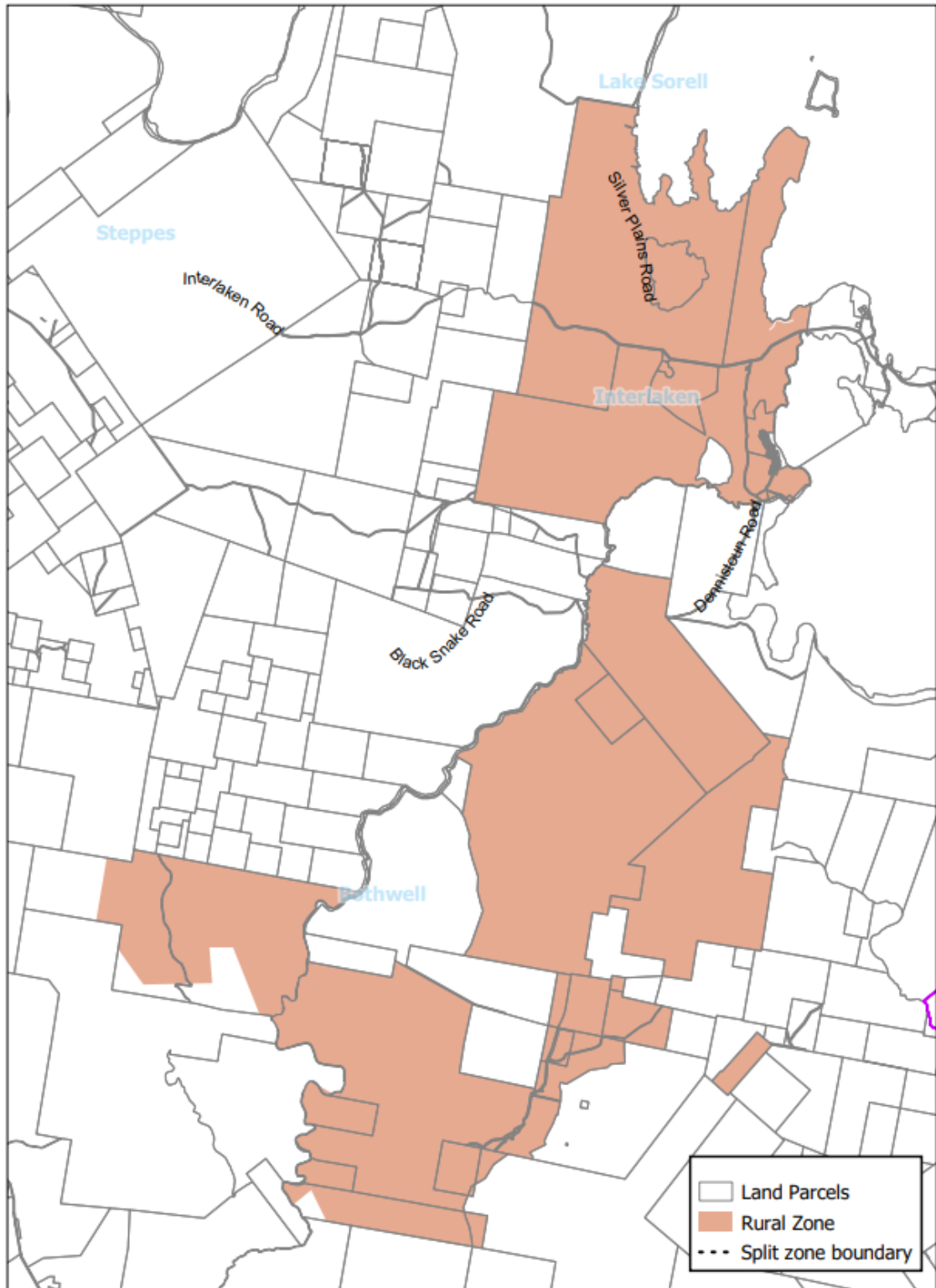


Figure 3 - Apply the Rural Zone to land at Interlaken, Bothwell and Lower Marshes.

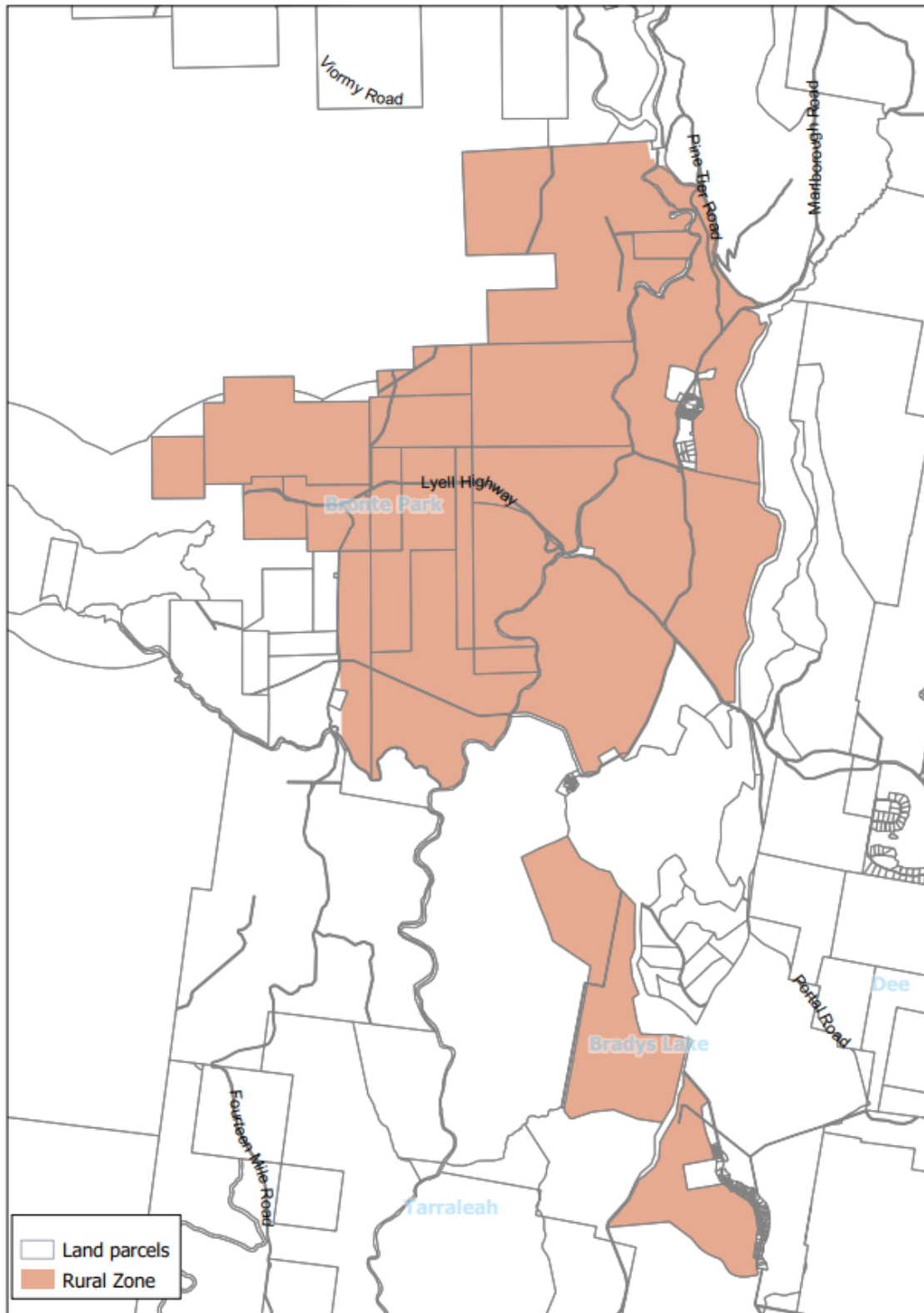


Figure 4 - Apply the Rural Zone to land at Bronte Park, London Lakes and Bradys Lakes.

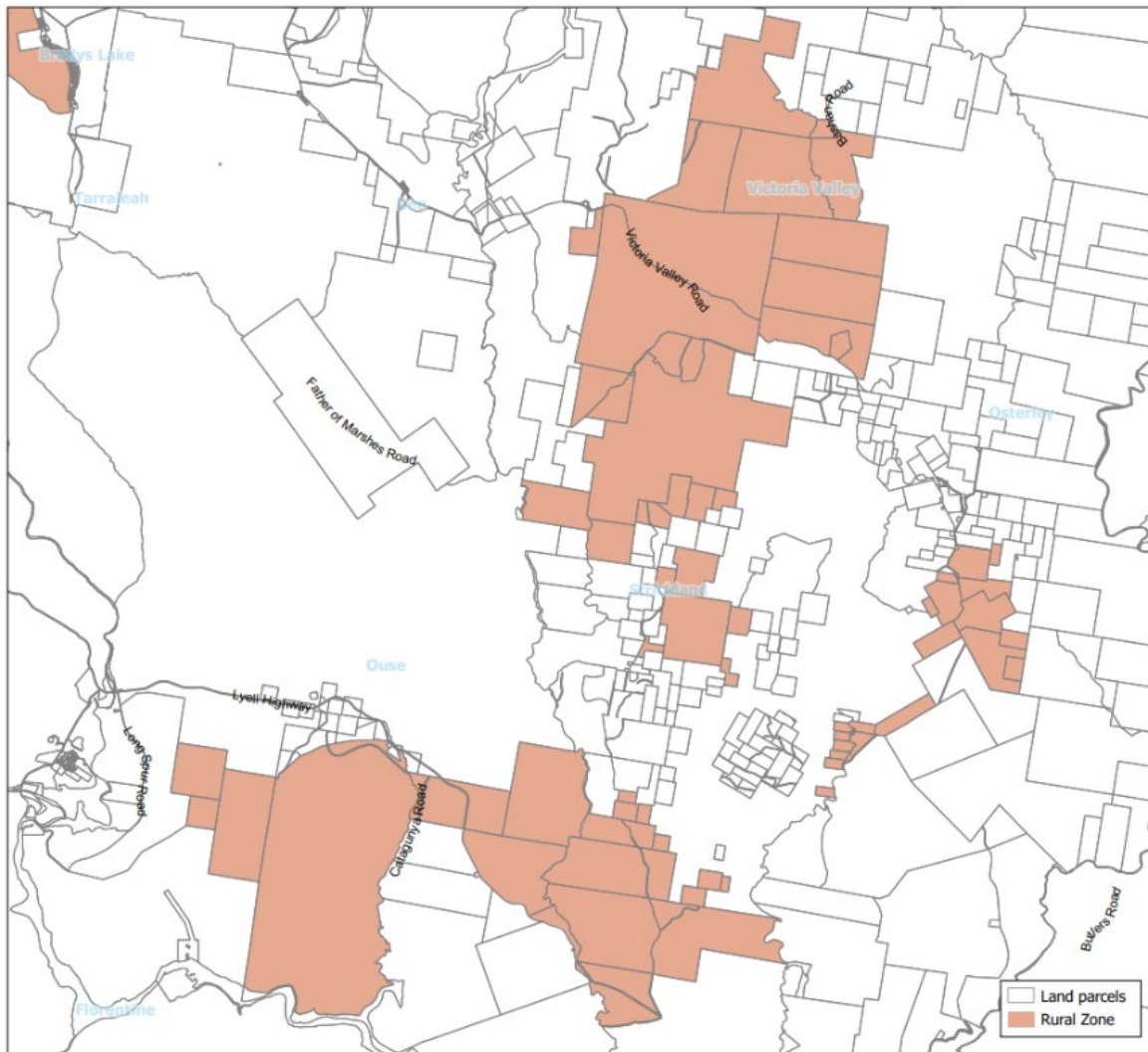


Figure 5 - Apply the Rural Zone to land at Victoria Valley, Strickland, Osterley, Ouse and Wayatinah.

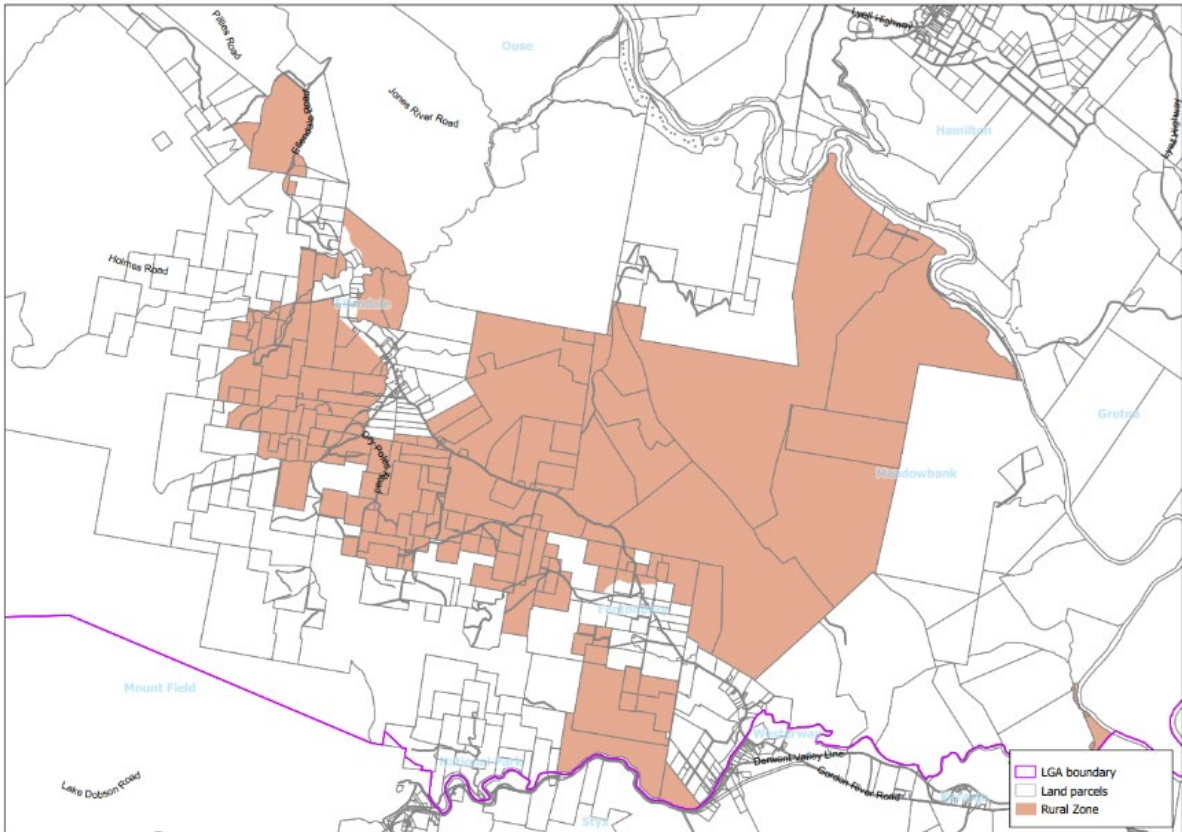


Figure 6 - Apply the Rural Zone to land at Ellendale, Meadowbank and Fentonbury.

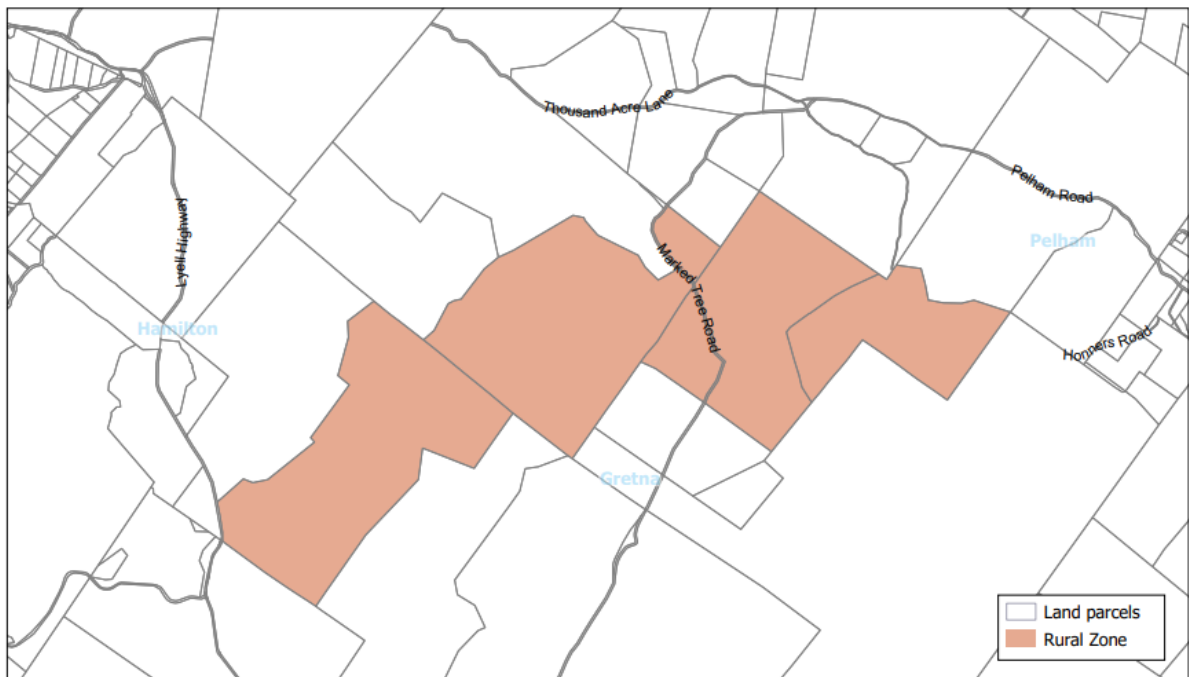


Figure 7 - Apply the Rural Zone to land at Hamilton, Gretna and Pelham.

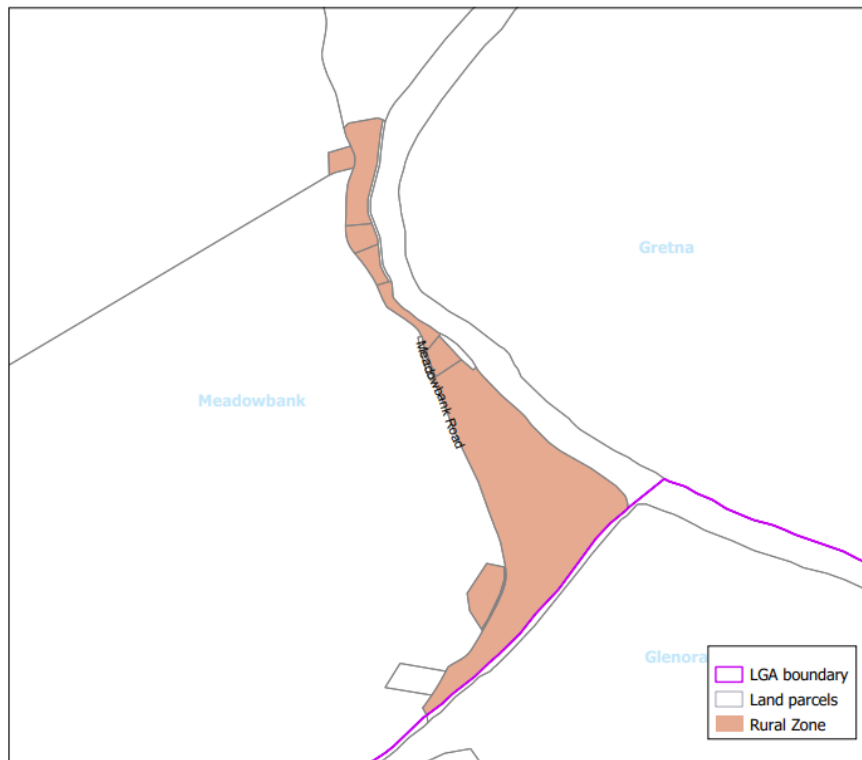


Figure 8 - Apply the Rural Zone to land at Meadowbank Road.

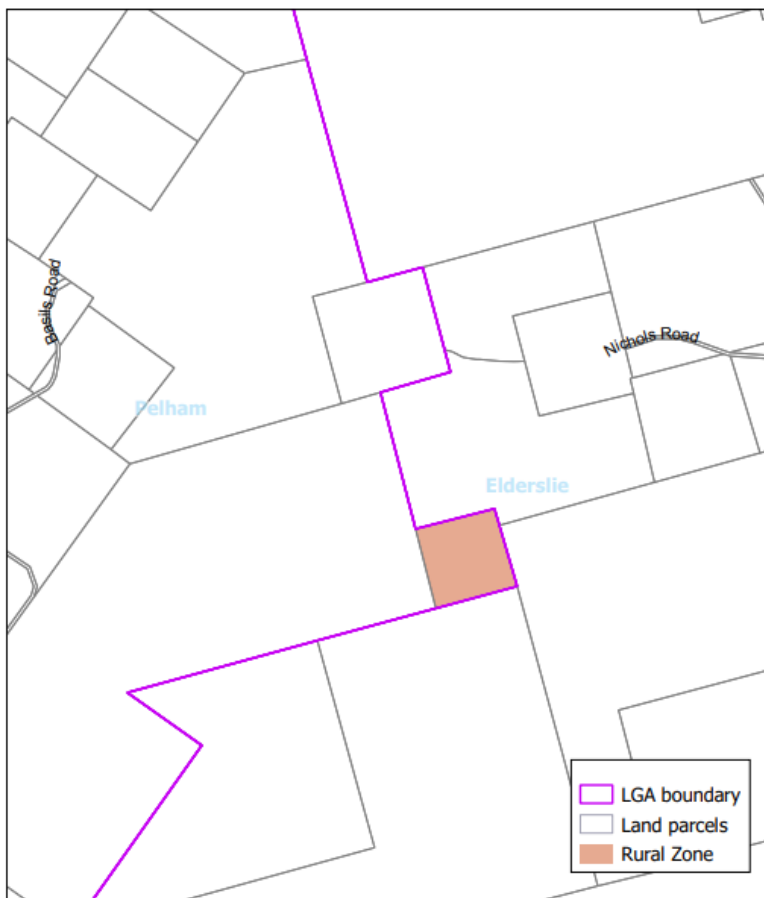


Figure 9 - Apply the Rural Zone to land at Pelham.

2. Apply the Priority Vegetation Area overlay, consistent with the Regional Ecosystem Model mapping, to all land shown in the draft amendment to be revised to Rural Zone in Figures 1 to 9, as shown below in Figures 10 to 18:

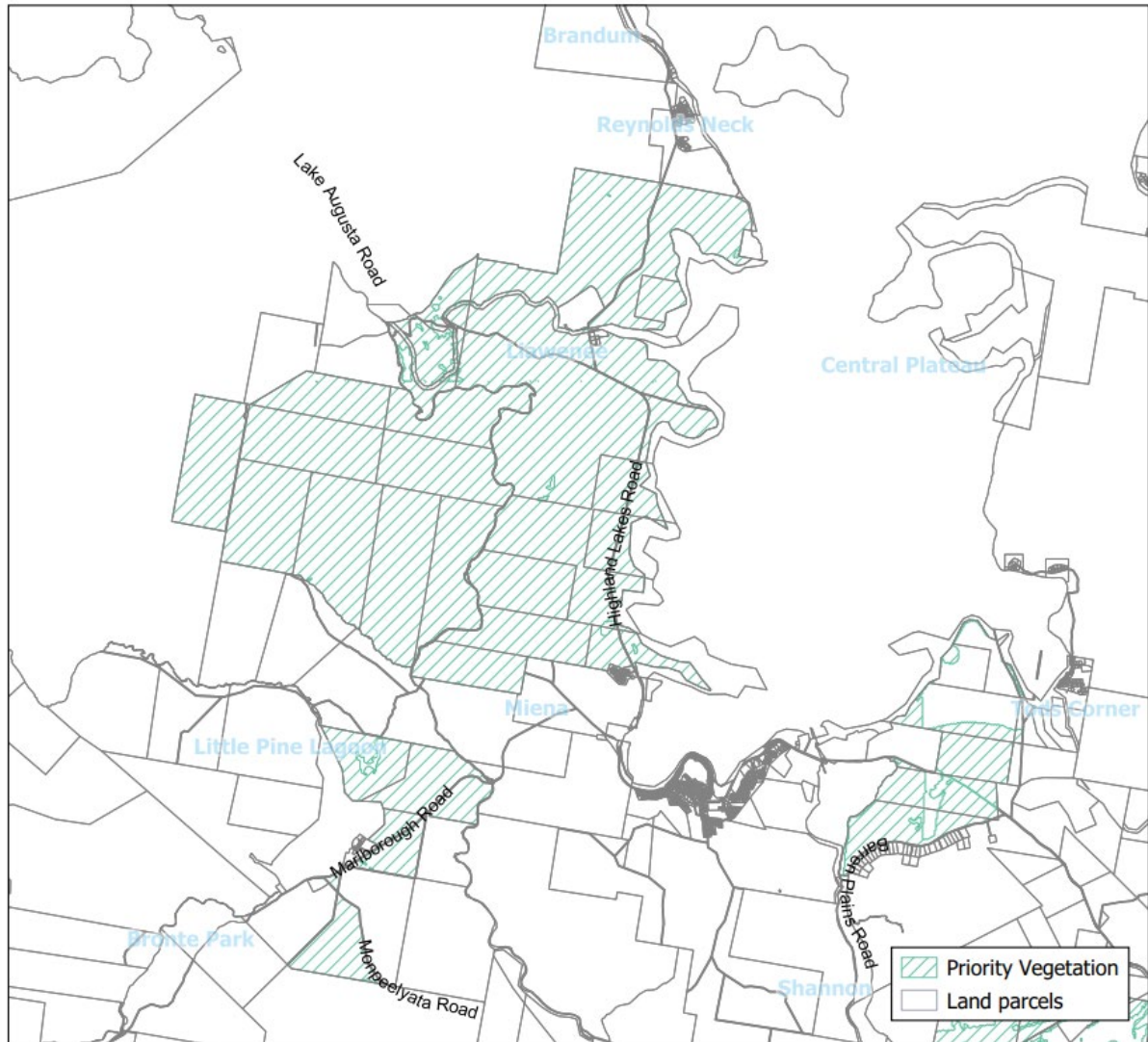


Figure 10 - Apply the Priority Vegetation Area overlay to land at Liawenee, Tods Corner, Little Pine Lagoon and Bronte Park.

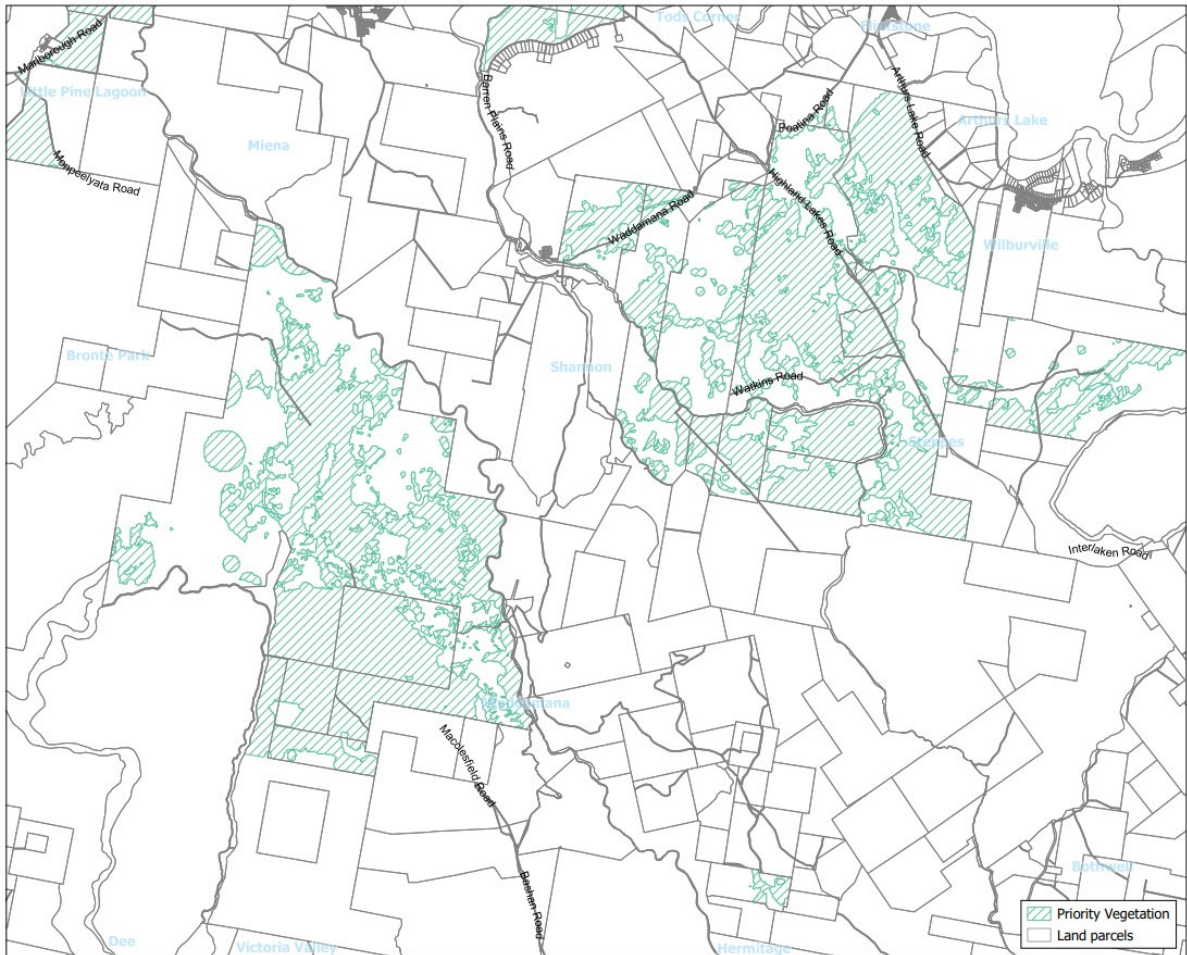


Figure 11 - Apply the Priority Vegetation Area overlay to land at St Patricks Plains, Steppes, Waddamana and Hermitage.

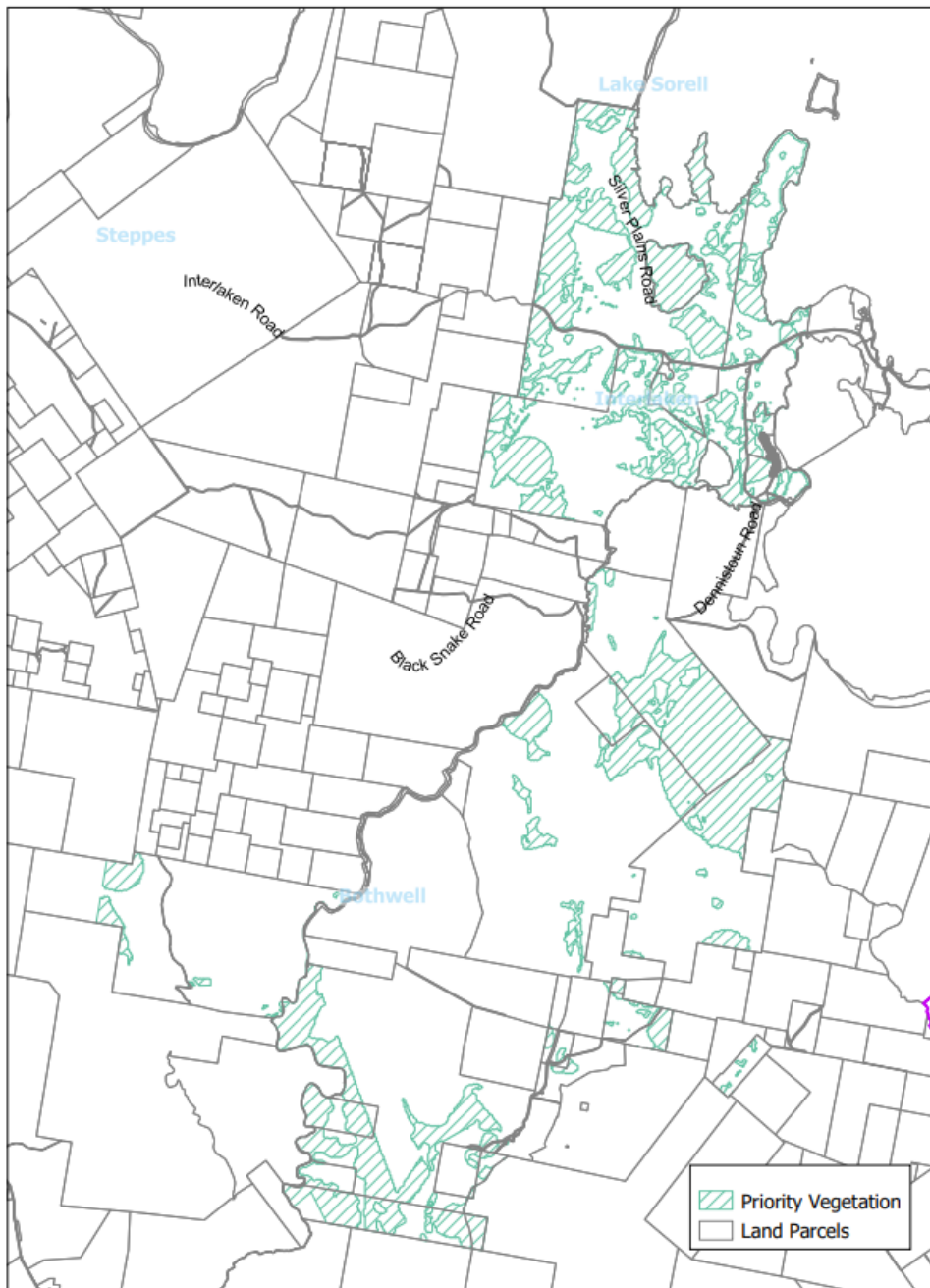


Figure 12 - Apply the Priority Vegetation Area overlay to land at Interlaken, Bothwell and Lower Marshes.

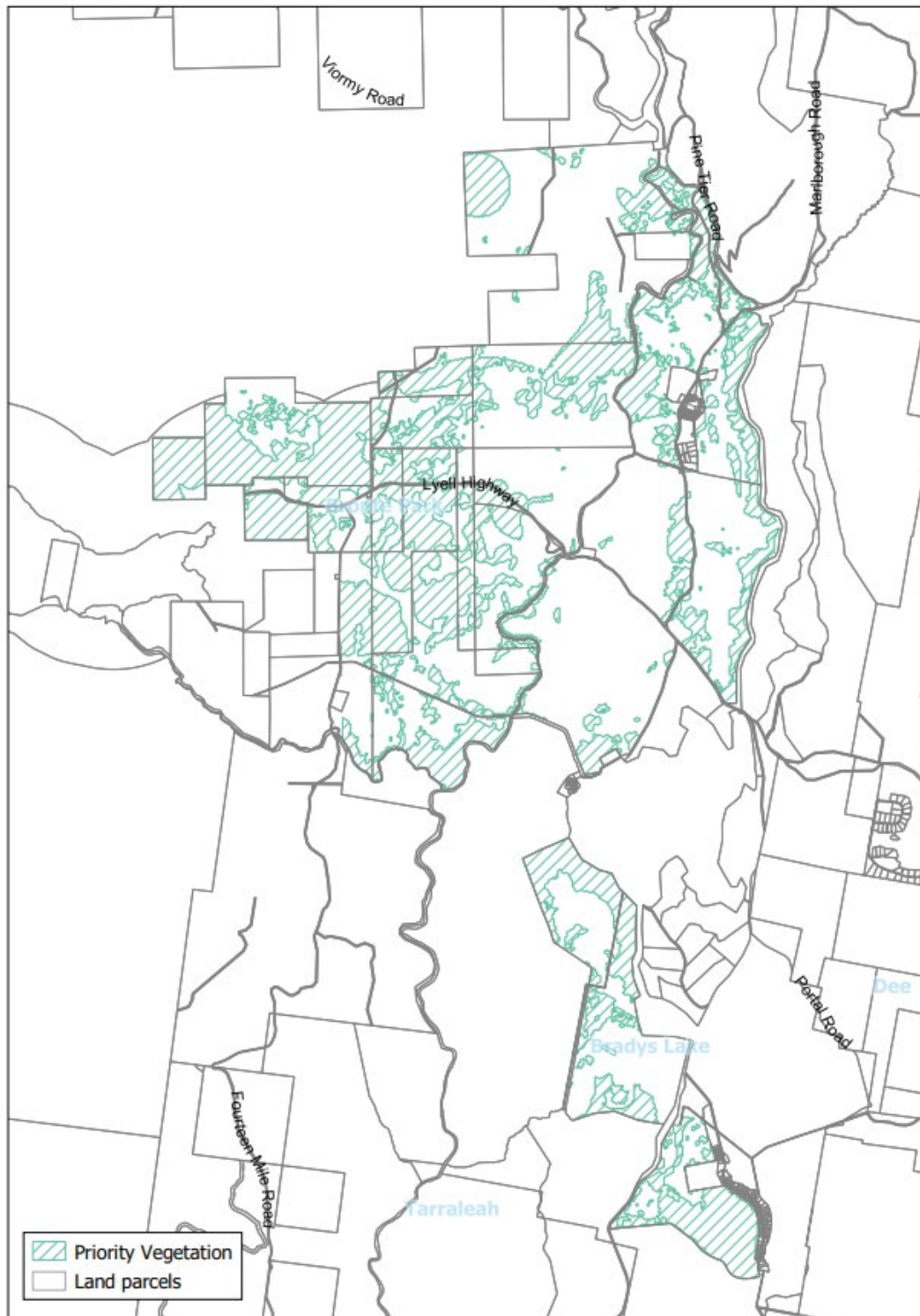


Figure 13 - Apply the Priority Vegetation Area overlay to land at Bronte Park, London Lakes and Bradys Lakes.

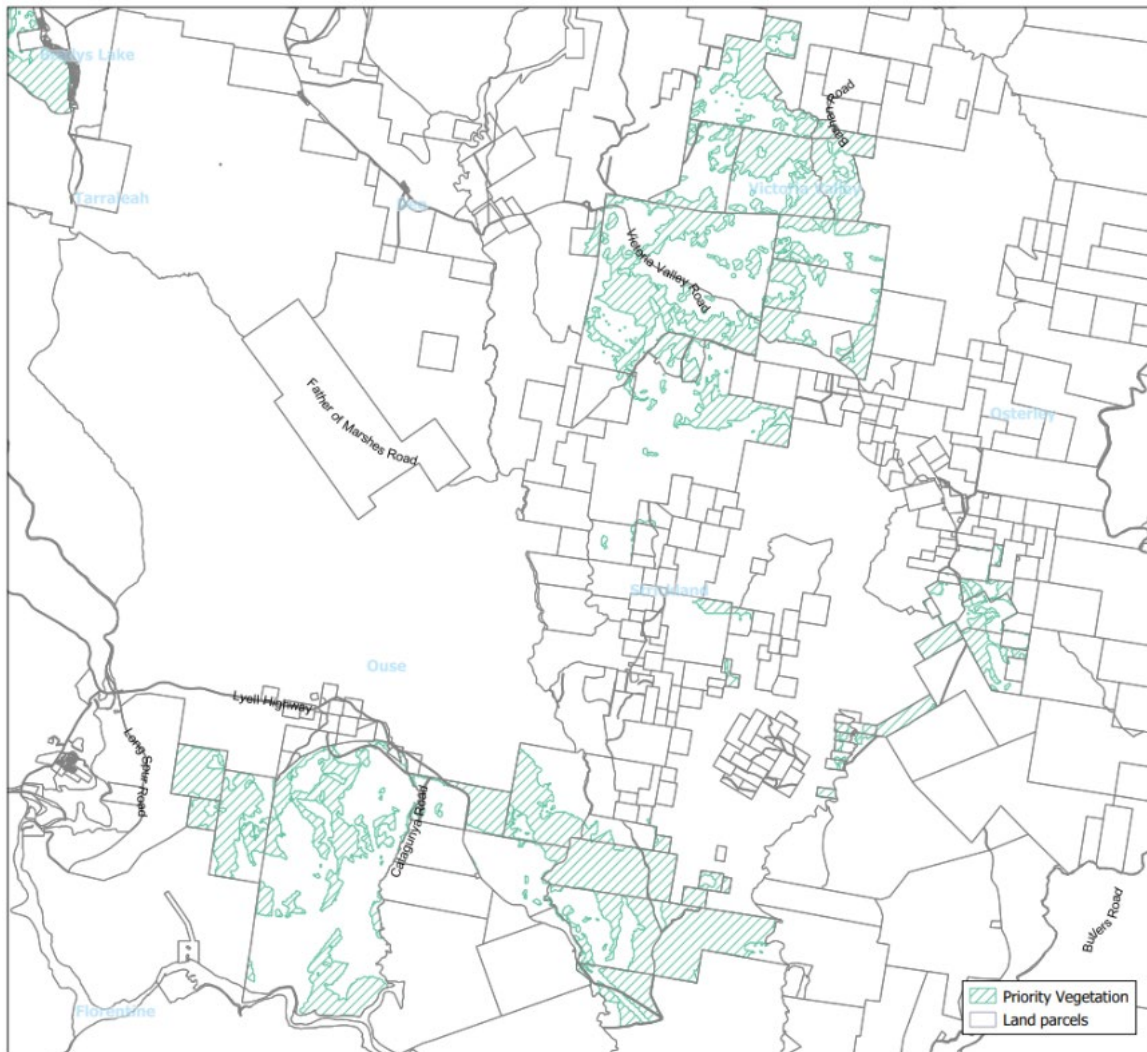


Figure 14 - Apply the Priority Vegetation Area overlay to land at Victoria Valley, Strickland, Osterley, Ouse and Wayatinah.

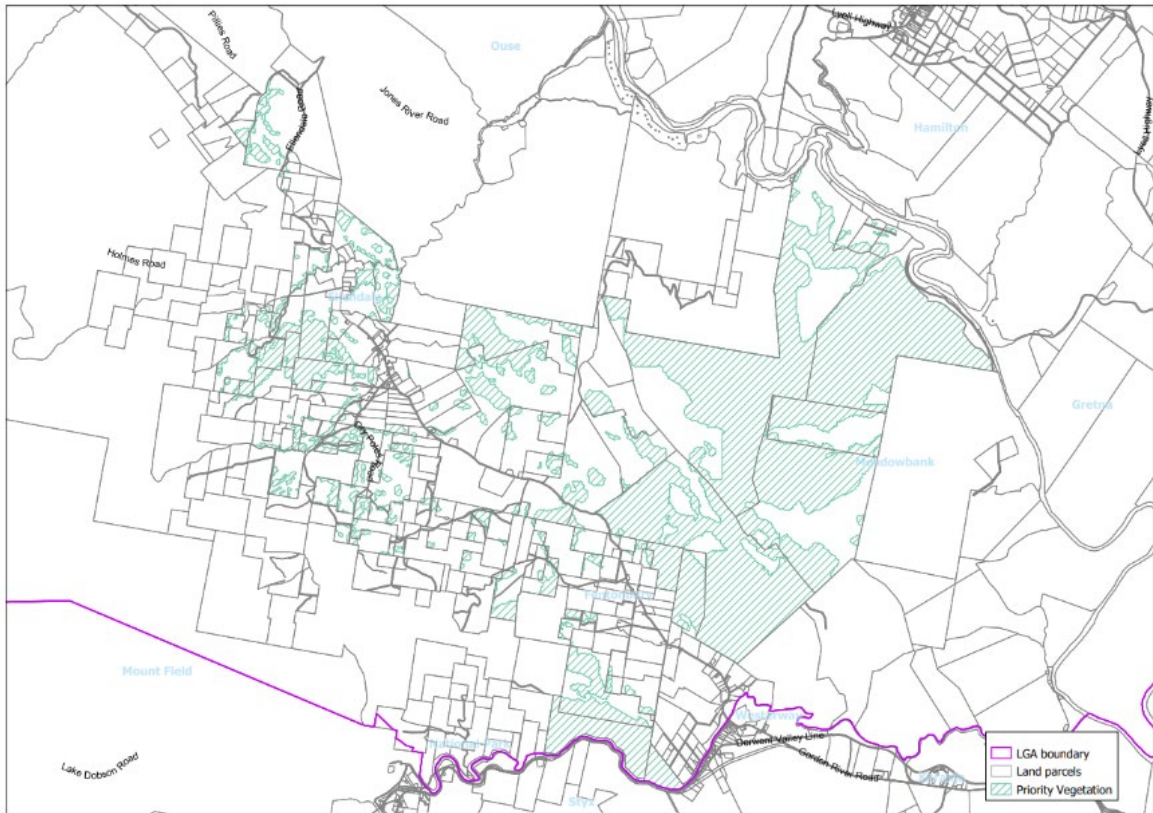


Figure 15 - Apply the Priority Vegetation Area overlay to land at Ellendale, Meadowbank and Fentonbury.



Figure 16 - Apply the Priority Vegetation Area overlay to land at Hamilton, Gretna and Pelham.

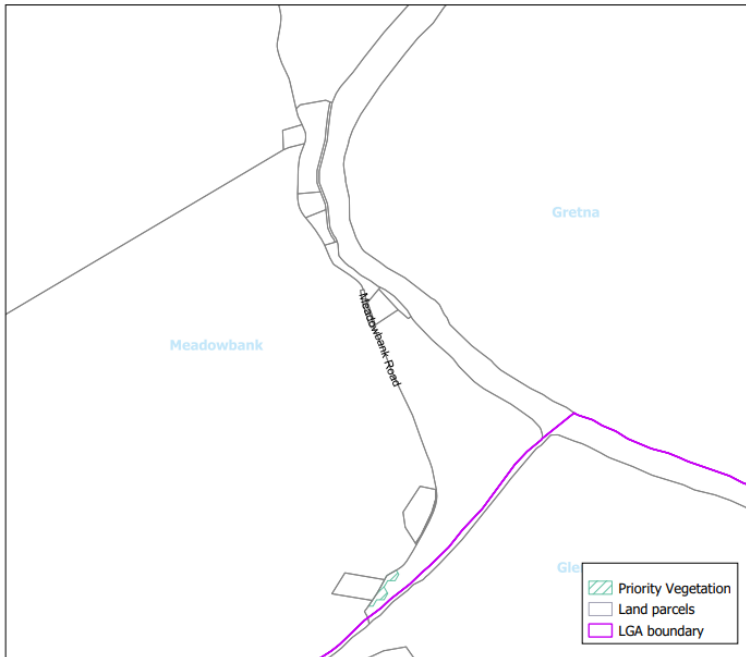


Figure 17 - Apply the Priority Vegetation Area overlay to land at Meadowbank Road.

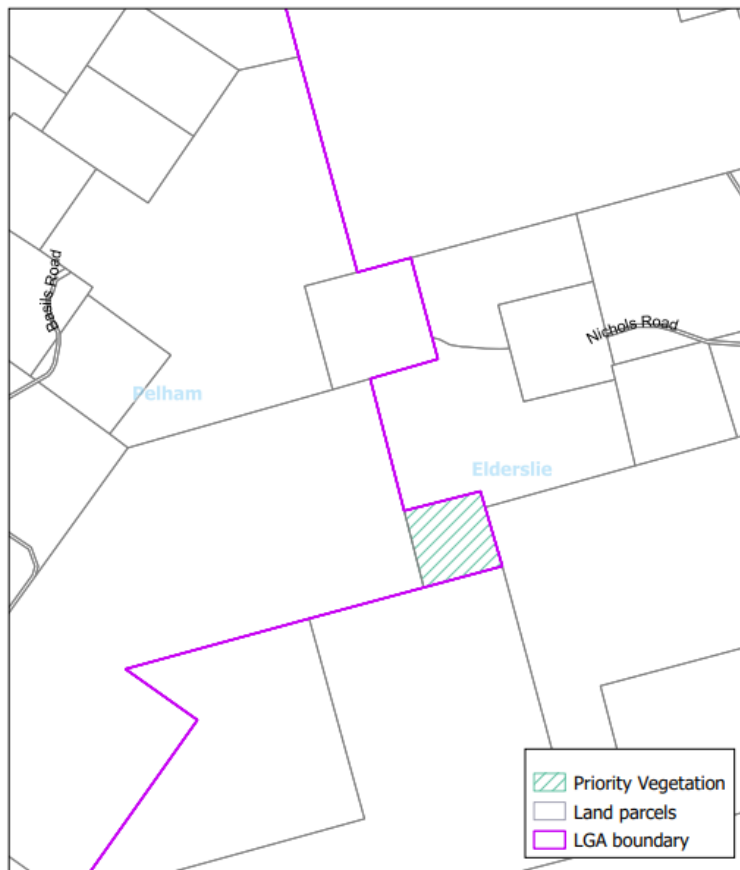


Figure 18 - Apply the Priority Vegetation Area overlay to land at Pelham.