

West of Nive River
EPA scope of
assessment

East of Nive River
Central Highlands
Council scope of
assessment

Lyell Highway

Nive River

Lake
Liapootah

Tarraloon
Power
station

TTA2

TTA1

TP1

TP2

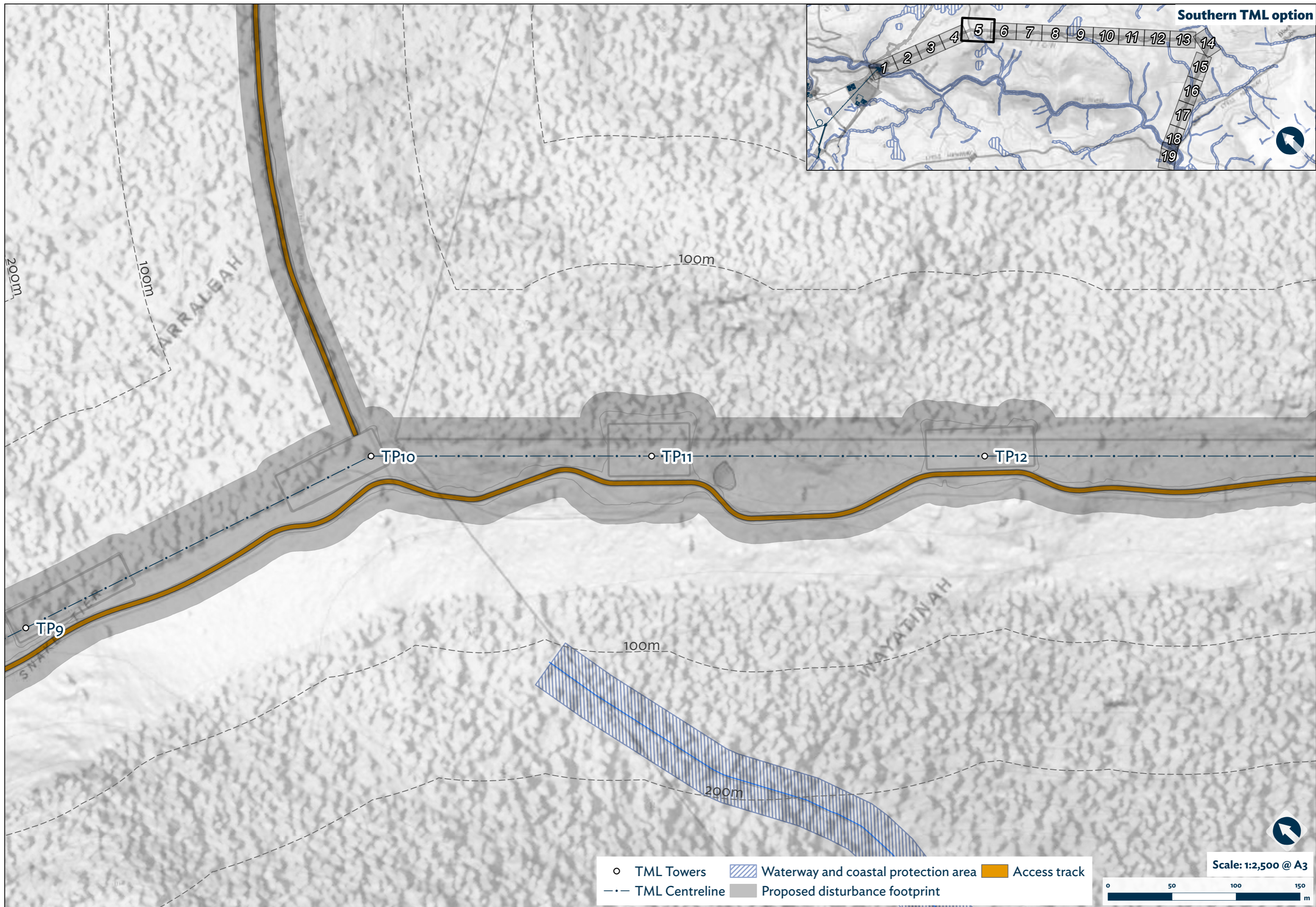
T1

- TML Towers
- ▨ Waterway and coastal protection area
- Access track
- .- TML Centreline
- Proposed disturbance footprint

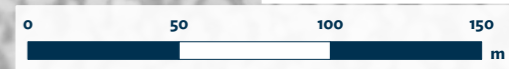
Scale: 1:2,500 @ A3



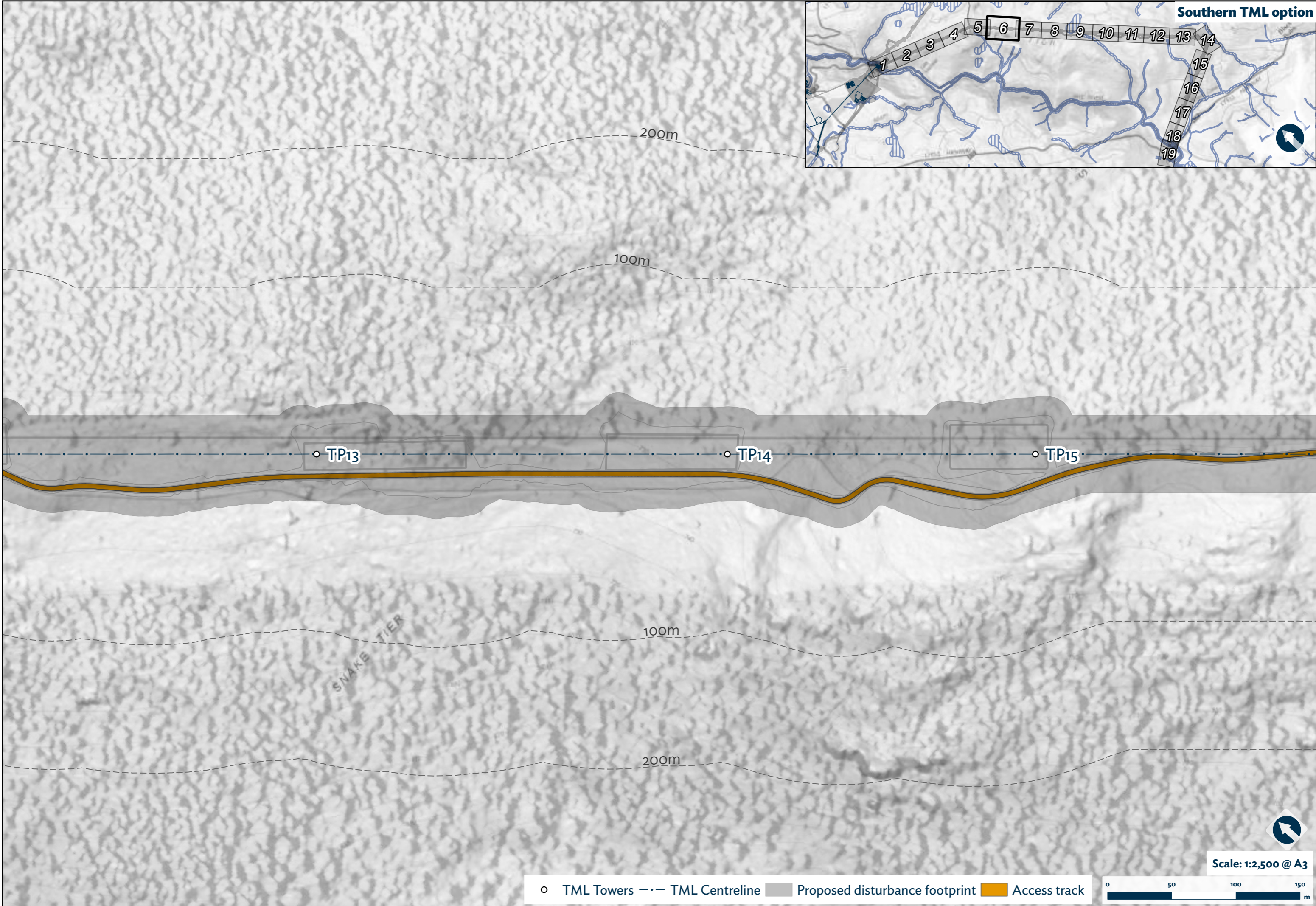
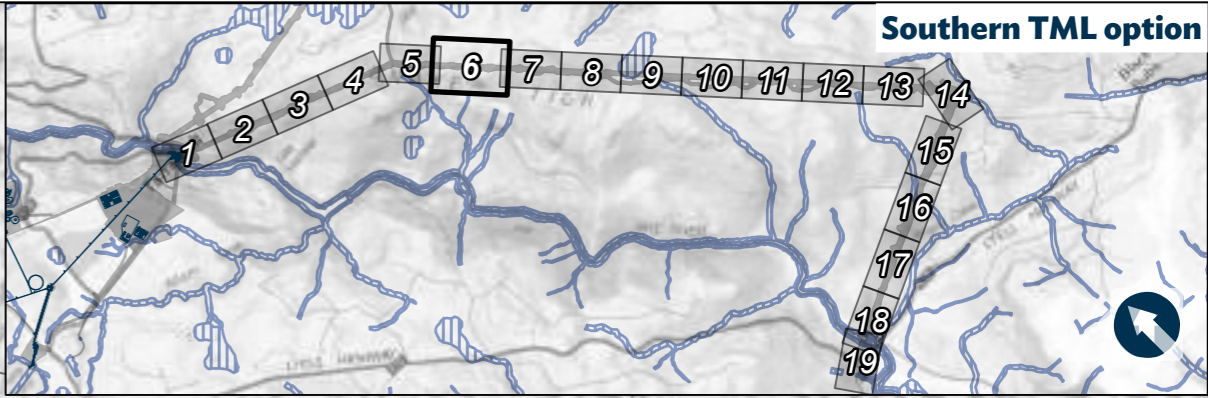
Path: \\hydro\man\j\corp\... Spatial... Data... Archived\Bent\Tarraloon\GIS\Tarraloon\ESIA\2026\april\1\MP\TAR_626-or-ENV\TARDEV-Waterway Protection on TML Detailed - A3 | 29/03/2026 2:39 PM | walyuda



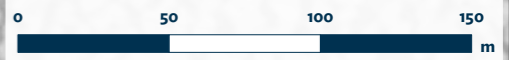
- TML Towers
- ▨ Waterway and coastal protection area
- ▭ Access track
- - - TML Centreline
- ▭ Proposed disturbance footprint



Path: \\hydro\manjiv\corp\Corporate_Spatial_Data_Archive\GIS\Tarraleah\GIS\Tarraleah\ESAs\2026\april\MPPTAR_626-or-ENV\TARDEV-Waterway Protection on TML Detailed - A3\121512026 239 PM | wshyada
 Path: \\hydro\manjiv\corp\Corporate_Spatial_Data_Archive\GIS\Tarraleah\GIS\Tarraleah\ESAs\2026\april\MPPTAR_626-or-ENV\TARDEV-Waterway Protection on TML Detailed - A3\121512026 239 PM | wshyada

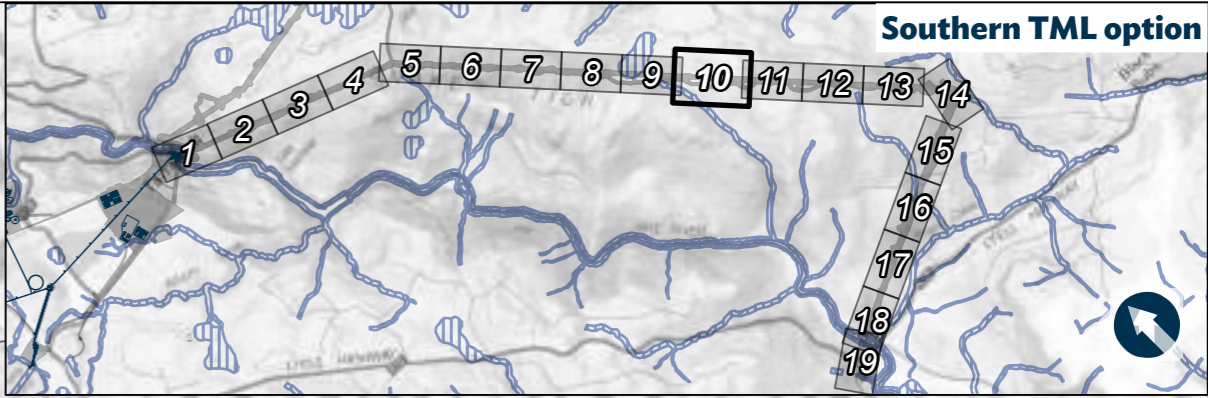


○ TML Towers - - - TML Centreline Proposed disturbance footprint Access track



Scale: 1:2,500 @ A3

Path: \\hydro\man\proj\Corporate_Spatial_Data_Archive\Bent\Tasmania\GIS\Tasmania\ESAs\2026\april\MPPTAR_626-or-ENV\TARDEV-Waterway Protection on TML Detailed - A3 | MPPTAR_626-or-ENV\TARDEV-Waterway Protection on TML Detailed - A3 | 29/03/2026 2:39 PM | wshyda



200m

100m

TP23

TP24

TP25

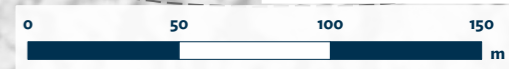
WAVATINAH

SNAKE TIER

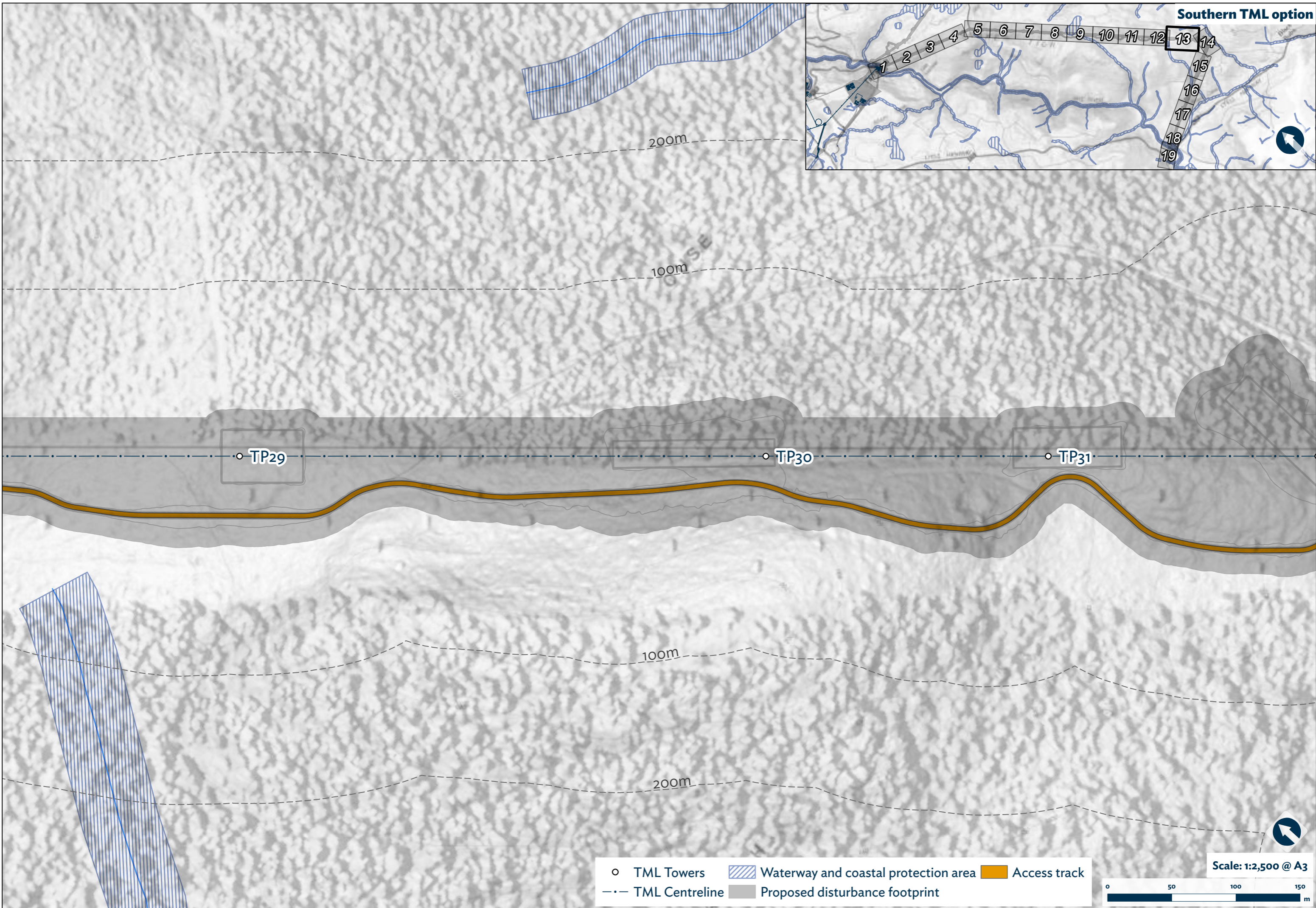
100m

- TML Towers
- ▨ Waterway and coastal protection area
- Access track
- .- TML Centreline
- Proposed disturbance footprint

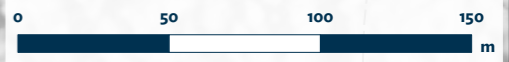
Scale: 1:2,500 @ A3



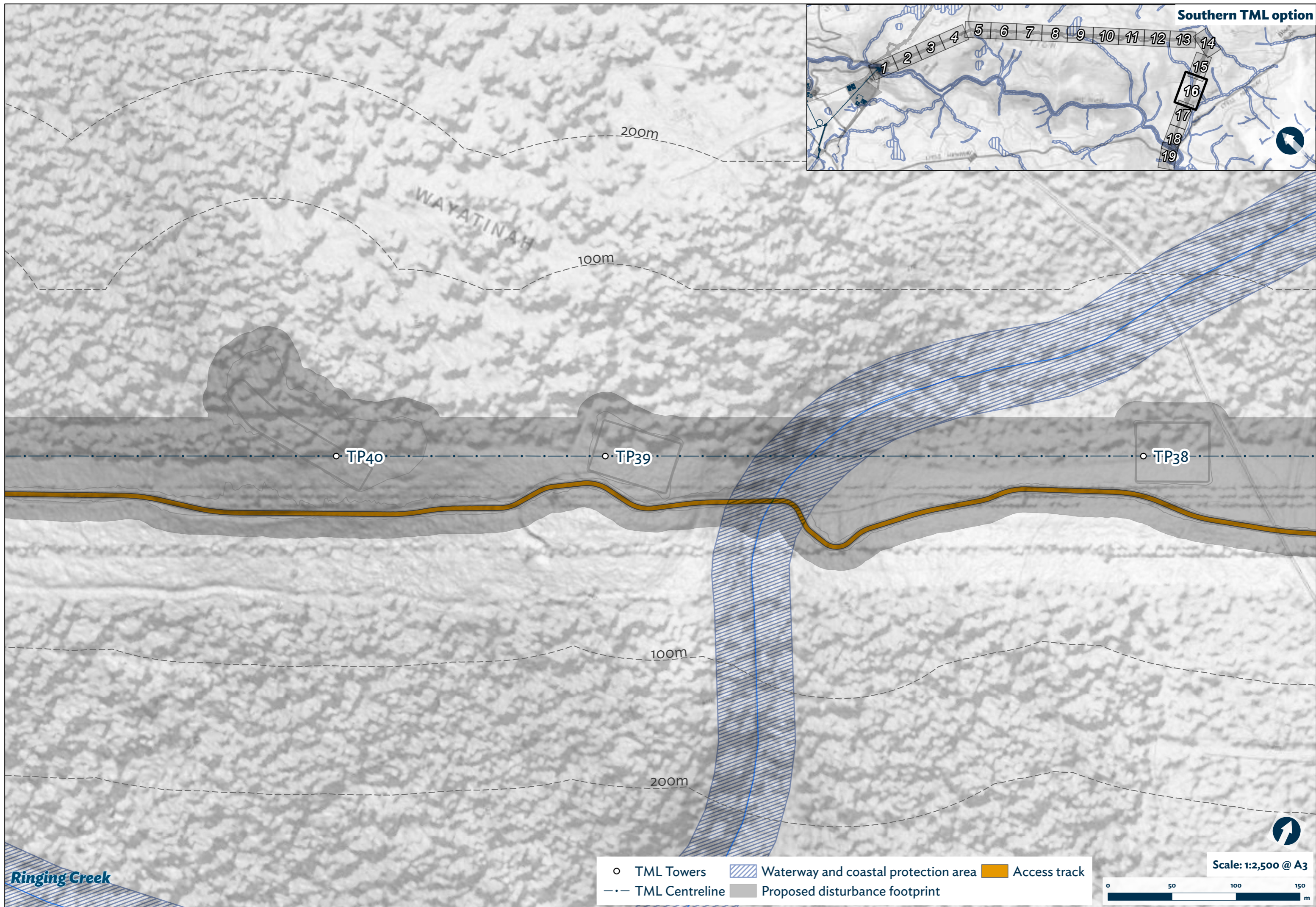
Path: \\hydro\manjiv\corp\Corporate_Spatial_Data_Archive\GIS\Tasmania\ESAs\2026\april\MPPTAR_626-0-ENV\TARDEV-Waterway Protection on TML Detailed - A3 | MPPTAR_626-0-ENV\TARDEV-Waterway Protection on TML Detailed - A3 | 29/03/2026 2:39 PM | wavyuda



○ TML Towers	Waterway and coastal protection area	Access track
- · - TML Centreline	Proposed disturbance footprint	

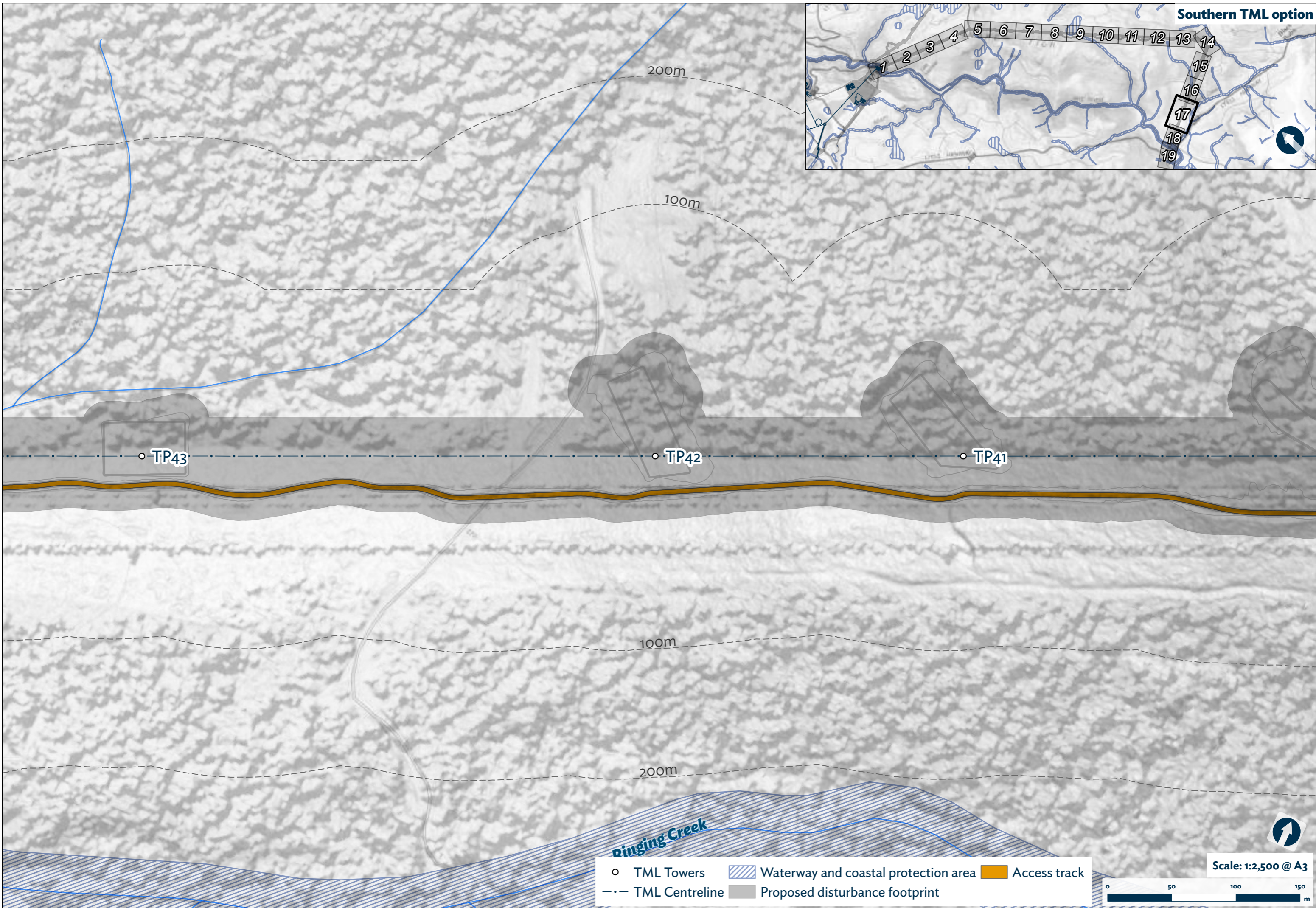


Path: \\hydro\manjiv\corp\Corporate_Spatial_Data_Archive\GIS\Tasmania\ESIA\2026\april\MPPTAR_626-0-ENV\TARDEV-Waterway Protection on TML Detailed - A3 | 19/03/2026 2:39 PM | wjyada



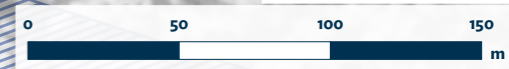
○ TML Towers	Waterway and coastal protection area	Access track
- - - TML Centreline	Proposed disturbance footprint	

Scale: 1:2,500 @ A3

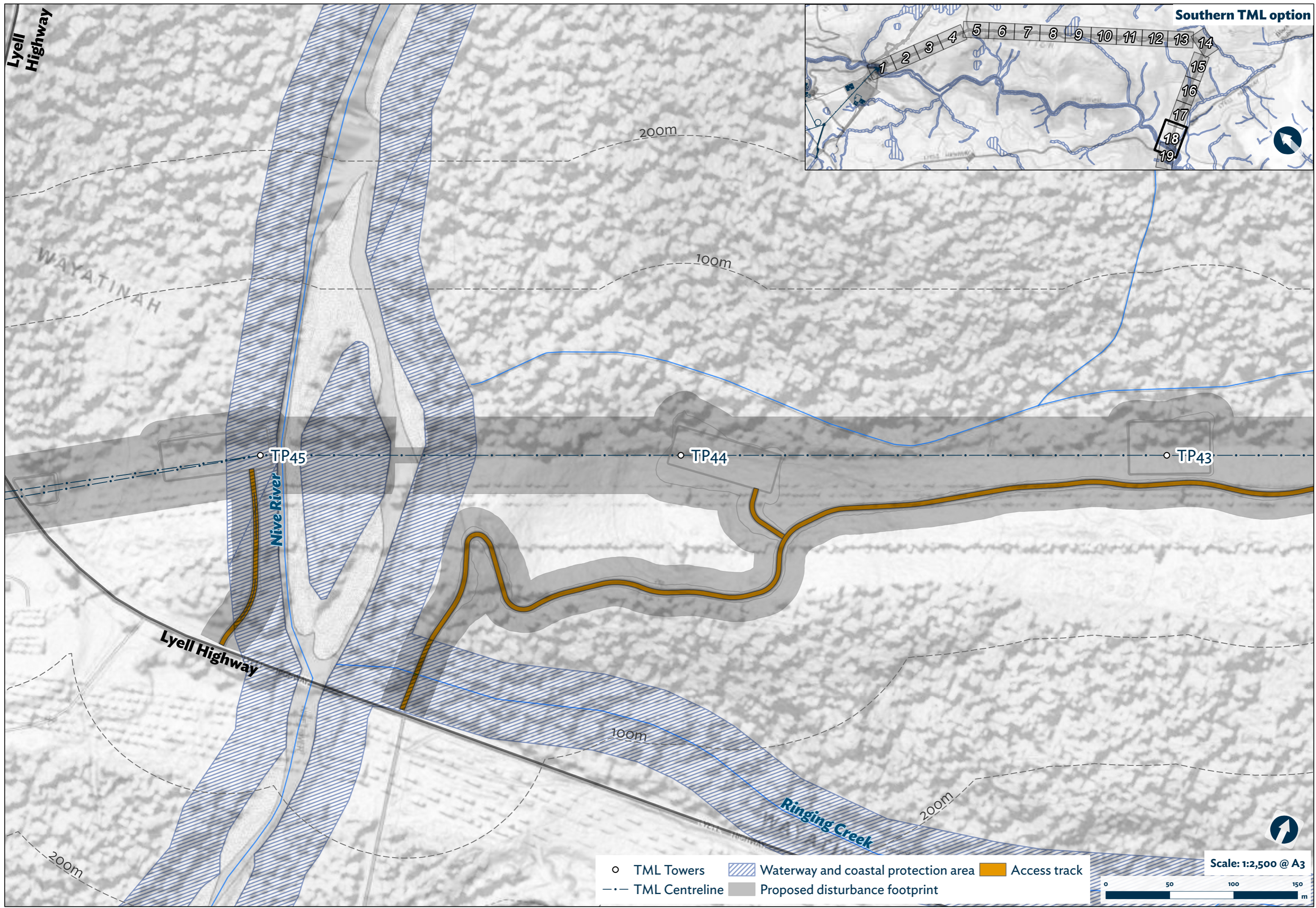


○ TML Towers	Waterway and coastal protection area	Access track
- - - TML Centreline	Proposed disturbance footprint	

Scale: 1:2,500 @ A3



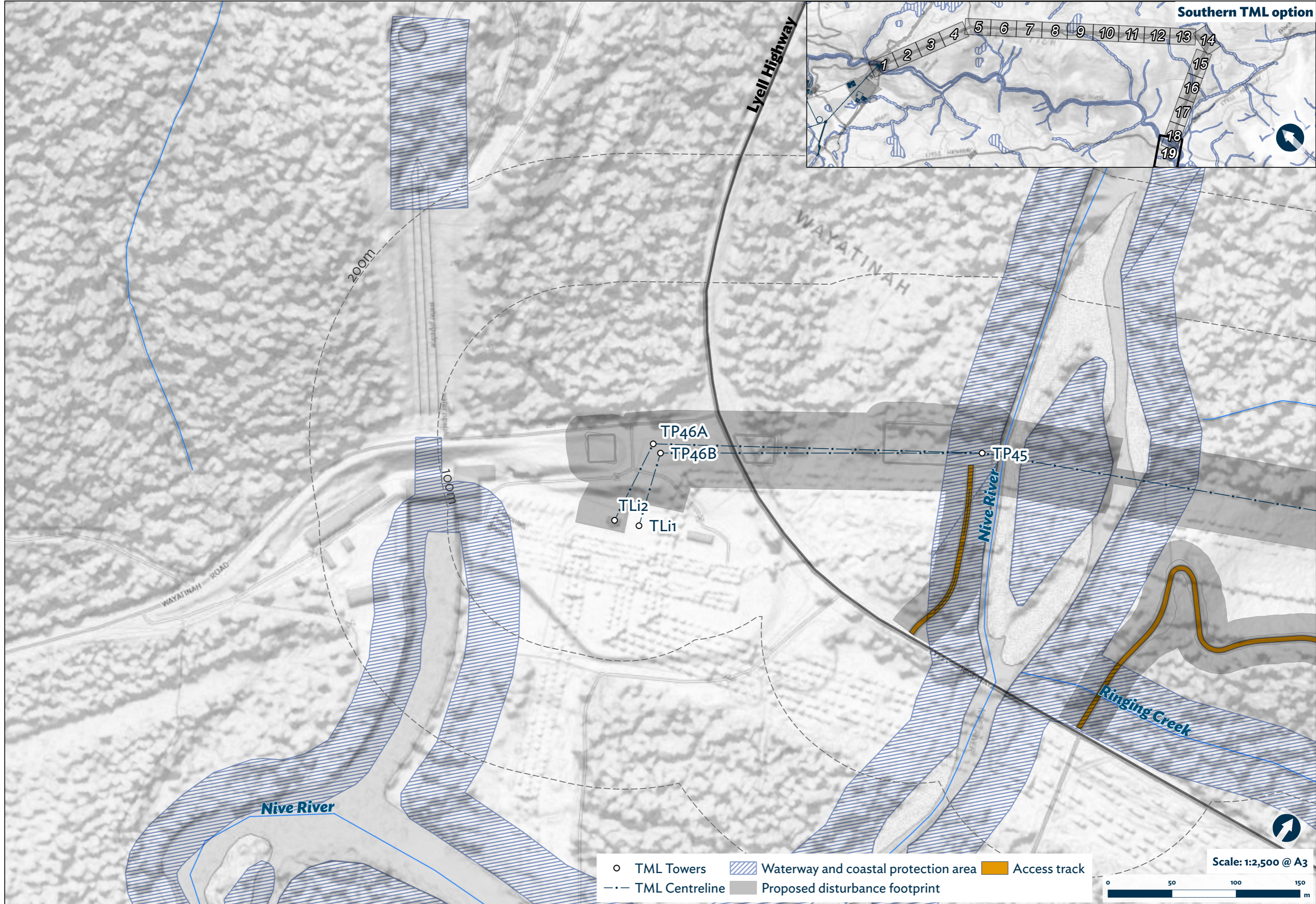
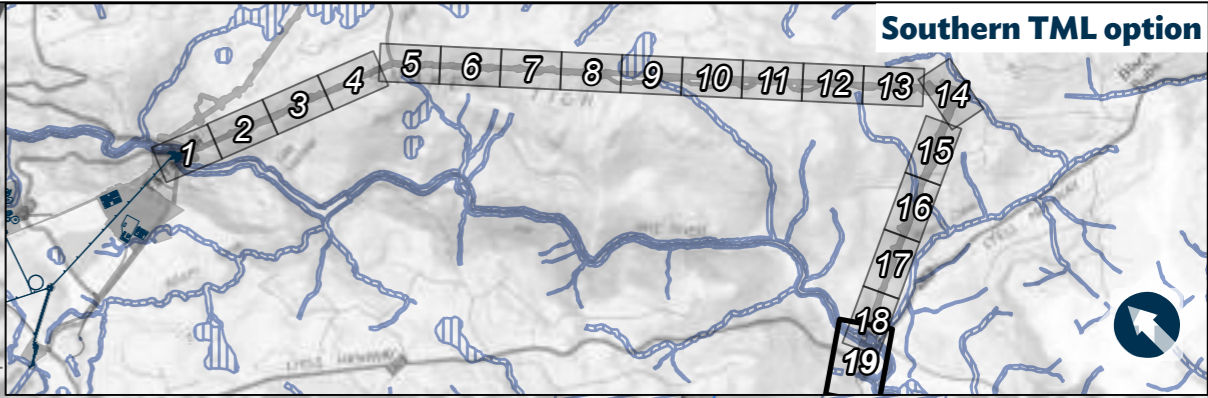
Path: \\hydro\manila\corp\Corporate_Spatial_Data_Archive\GIS\Tasmania\ESIA\2026\april\MPPTAR_626_of_ENV\TARDEV-Waterway Protection on TML Detailed - A3 | 29/03/2026 2:59 PM | walyuda



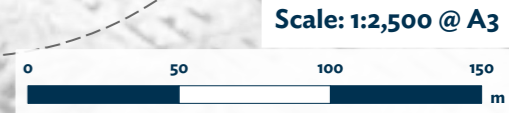
- TML Towers
- ▨ Waterway and coastal protection area
- Access track
- .- TML Centreline
- Proposed disturbance footprint



Path: \\hydro\manjiv\corp\Corporate_Spatial_Data_Archive\Bent\Tasmania\GIS\Tasmania\ESIA\2026\april\MPPTAR_626-or-ENV\TARDEV-Waterway Protection on TML Detailed - A3\MPPTAR_626-or-ENV\TARDEV-Waterway Protection on TML Detailed - A3\129/03/2026 2:59 PM\wayatidra

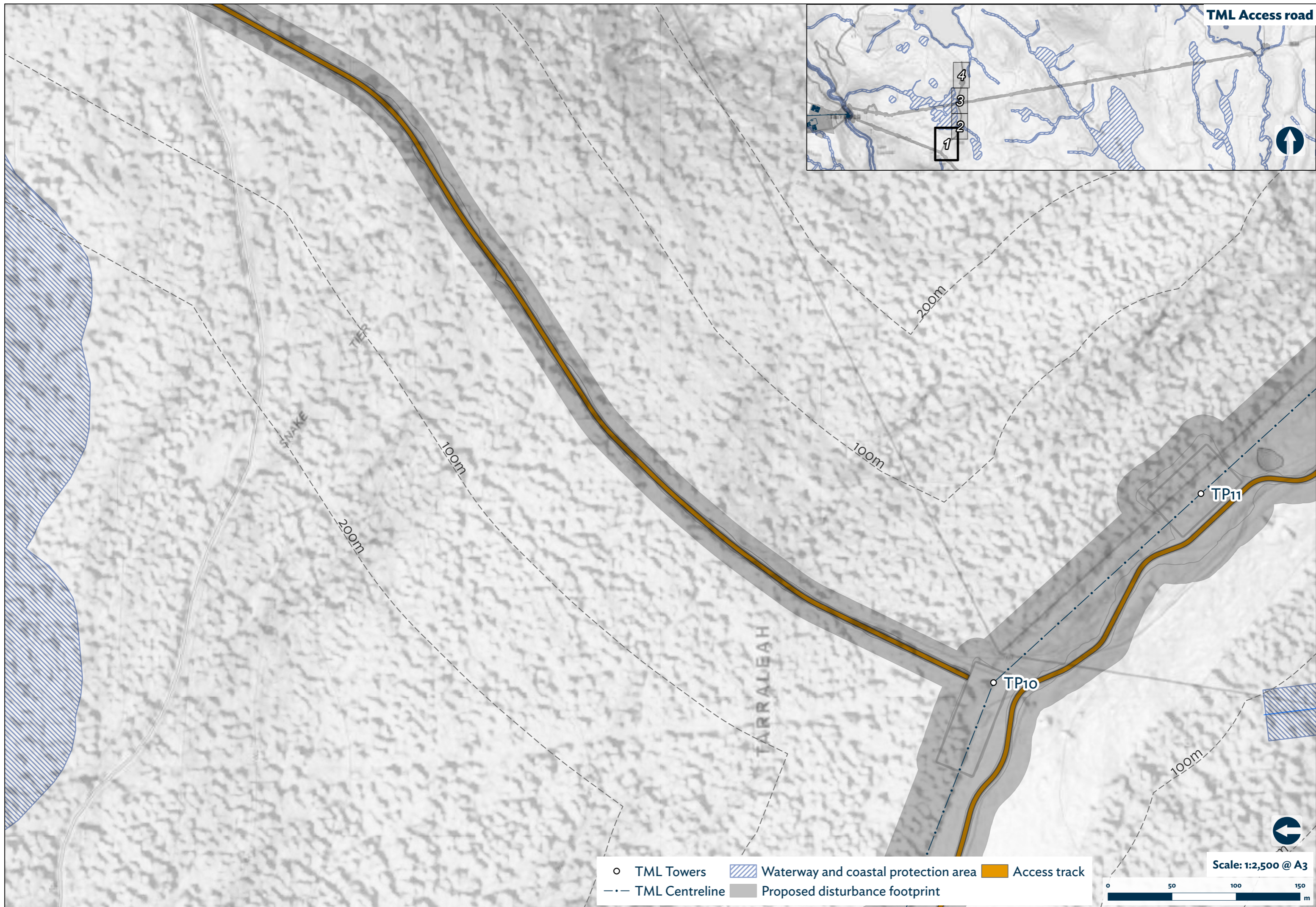


○ TML Towers	Waterway and coastal protection area	Access track
- - - TML Centreline	Proposed disturbance footprint	



Path: \\hydro\man\scrap\Corporate_Spatial_Data_Archive\GIS\Tasmania\ESIA\2026\april\MPR_TAR_626-of-ENV\TARDEV\Waterway Protection on TML Detailed - A3 [2026-04-26 2:39 PM] \wayatwah

Path:\Hydro\muni\corp\Corporate_Spatial_Data_Archive\GIS\Tarraleah\GIS\Tarraleah\ESIA\2026\apri\MPPTAR_626\env\TARDEV\Waterway Protection on TML Detailed - A3 | MPPTAR_626\env\TARDEV\Waterway Protection on TML Detailed - A3 | 29/03/2026 2:59 PM | walyuda

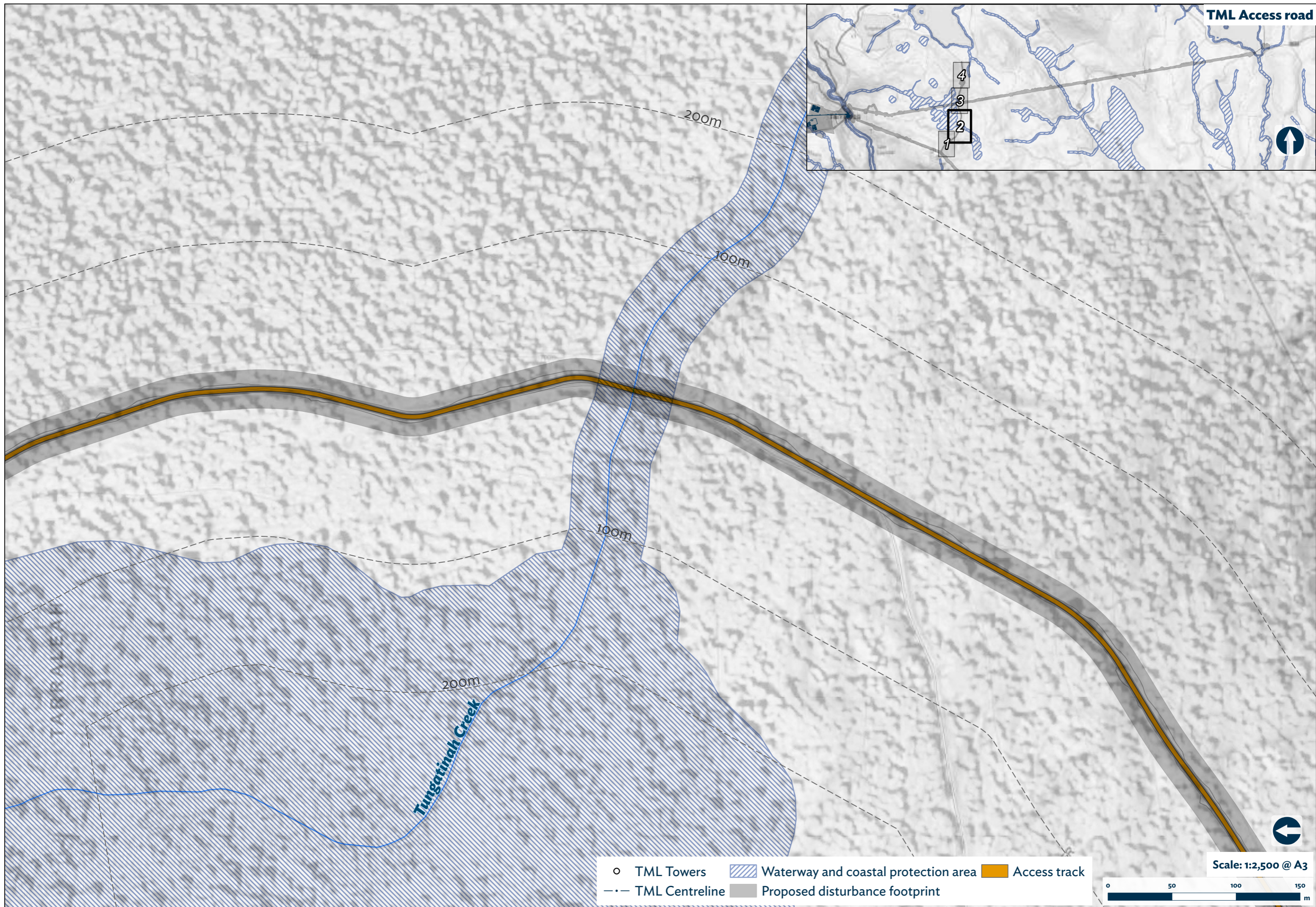


○ TML Towers	Waterway and coastal protection area	Access track
- - - TML Centreline	Proposed disturbance footprint	

Scale: 1:2,500 @ A3

0 50 100 150 m

Path: \\hydro\manjiv\corp\Corporate_Spatial_Data_Archive\GIS\Tasmania\ESIA\2026\april\MPR_TAR_626-of-ENV\TARDEV-Waterway Protection on TML Detailed - A3 [29/03/2026 2:59 PM] \manjiv

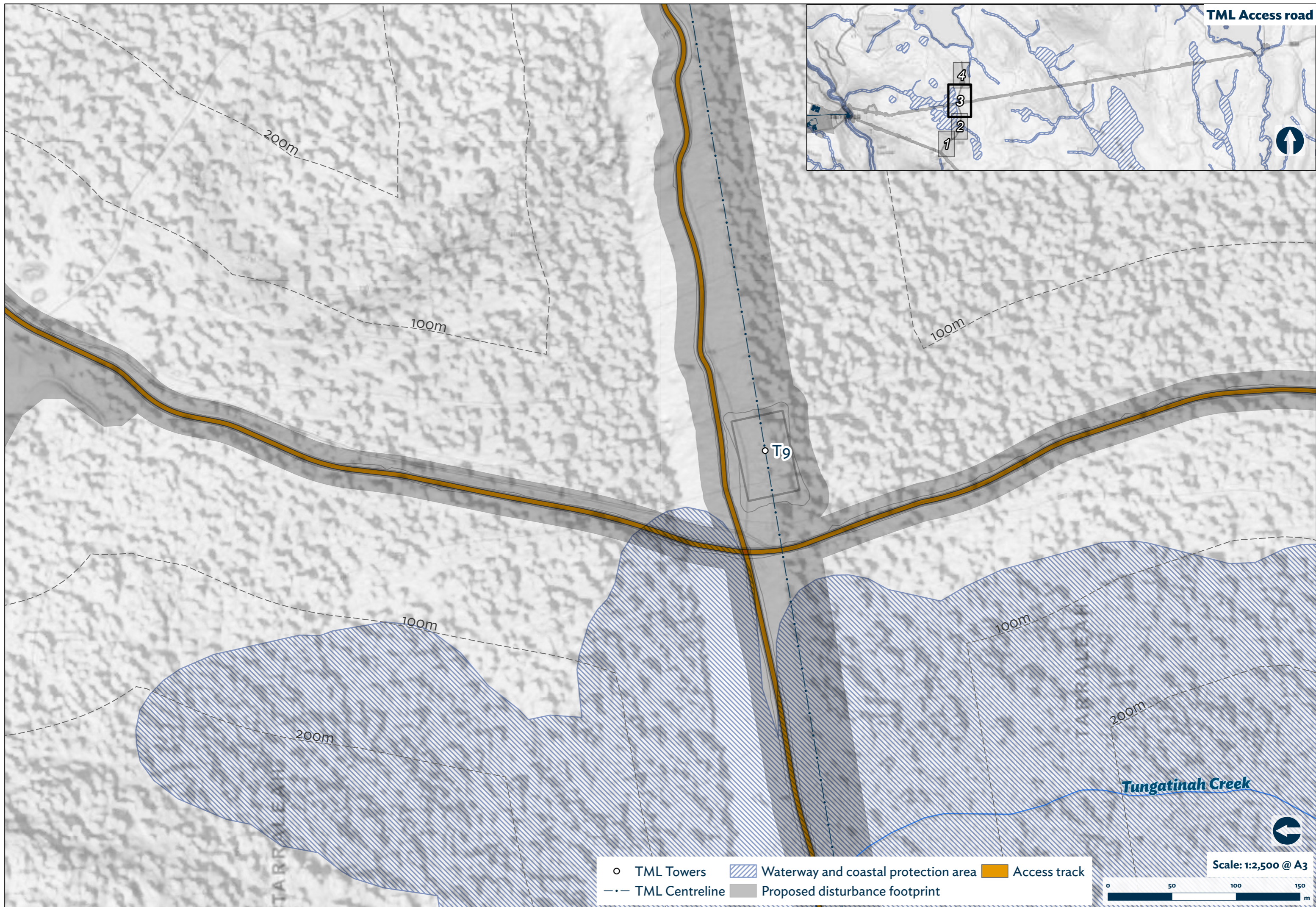


- TML Towers
- ▨ Waterway and coastal protection area
- Access track
- - - TML Centrelines
- Proposed disturbance footprint

Scale: 1:2,500 @ A3



Path:\Hydro\munic\corp\Corporate_Spatial_Data_Archive\bin\Tasmania\GIS\Tasmania\ESAs\2026\apr\1\MPPTAR_626-of-ENV\TARDEV-Waterway Protection on TML Detailed - A3 | MPPTAR_626-of-ENV\TARDEV-Waterway Protection on TML Detailed - A3 | 29/03/2026 2:59 PM | walyuda



TML Access road



T9

Tungatinah Creek



- TML Towers
- ▨ Waterway and coastal protection area
- Access track
- - - TML Centreline
- Proposed disturbance footprint

Scale: 1:2,500 @ A3



