

# New Residents Kit

## Central Highlands Council

### Administration & Works & Services

6 Tarleton Street

HAMILTON TASMANIA 7140

Phone: (03) 6286 3202

Fax: (03) 6286 3334

\* \* \* \*

### Development & Environmental Services

19 Alexander Street

BOTHWELL TASMANIA 7030

Phone: (03) 6259 5503

Fax: (03) 6259 5722

Website: [www.centralhighlands.tas.gov.au](http://www.centralhighlands.tas.gov.au)



### Inside this kit:

Municipal Map	3
Township Information	5-7
Waste	8
Building/ Planning/ Plumbing	8
Councillors	9
Dog Registrations	9
Feedback/Request Form	14

### Disclaimer

*Central Highlands Council has made every endeavour to ensure that details are correct at the time of printing but can accept no responsibility for any inaccuracy or mis-deception contained in the publication as a result of information supplied.*

*All efforts have been made to ensure the accuracy of information in this document. If there are any additions or alterations required could you please advise us of the correct information, in writing from an authorized person representing your organization or service.*

## Index

Welcome by Mayor .....	3
Municipal Map .....	3
About our Council .....	4
Community Development Grant Applications .....	4
Hamilton Township .....	5
Ouse Township.....	5
Gretna Township .....	5
Ellendale/Fentonbury/Westerway Townships .....	6
Derwent Bridge/Bronte Park Townships .....	6
Wayatinah/Tarraleah Townships .....	6
Miena/Great Lake .....	6
Bothwell Township .....	7
Volunteer Groups .....	7
Waste Management Services .....	8
Business Development .....	8
Building/Planning/Plumbing .....	8
Dog Control & Registration .....	9
Councillors .....	9
Rates & Charges .....	10
Change of Addresses.....	10
Newsletter .....	10
Local Government Elections .....	10
Online Access Centers.....	11
Bothwell Cemetery .....	11
Independent Living Units .....	11
Rivers Run Touring Association .....	11
Immunisation .....	11
Justice of the Peace .....	11
Help .....	12
Health Services in the Central Highlands .....	13
Feedback/Request Form .....	14
Council Offices .....	14

## Welcome by Mayor

As Mayor of the Central Highlands Council, and on behalf of my fellow Councillors I am delighted you have chosen to live in our Municipality and extend a very warm welcome to you.

The council area covers 12% of the land mass of Tasmania and is unique in its diversity and its breathtaking scenery.

- We boast the best trout fishing in Australia
- The oldest golf course in the Southern Hemisphere
- The Australasian Golf Museum (Displays on loan from Mr Peter Toogood, Tasmanian Museum and Art Gallery and various other donations and acquisitions.
- World Heritage Areas
- Beautifully maintained Georgian homes and buildings

- **Cattle, Sheep, Crops, Vineyards and Cherries**
- **Cattle, Sheep & Horse Studs**
- **Dairies**

If I can be of assistance to you in Council related issues please contact me and I would be delighted to assist in any way I can.

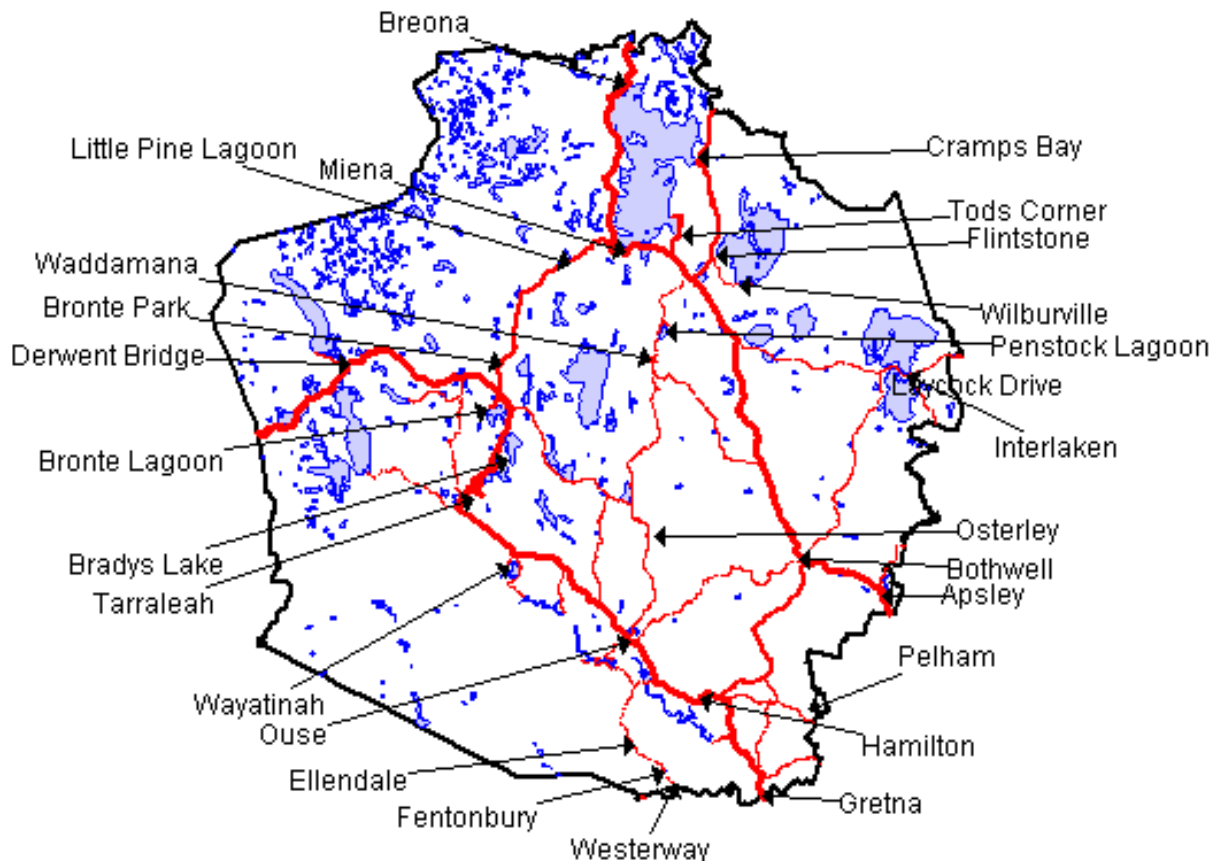


*Once again welcome to our Municipality.*

Deirdre Flint OAM  
**MAYOR**

## Municipal Map

### CENTRAL HIGHLANDS MUNICIPAL MAP



## About our Council

The Central Highlands Council was created in 1993 through the merging of the former Municipalities of Bothwell and Hamilton.

The area of the Municipality is 8010 square kilometers.

The municipality has a population of approximately 2554 permanent residents scattered throughout the district, which is predominately a rural based economy.

Situated in the centre of Tasmania, the Central Highlands was home to the Tasmanian Aboriginal Big River Tribe.

Strong elements of Scottish and Irish ancestry is apparent throughout the Central Highlands.

History, culture, tourism & agriculture is very important to our small rural townships. The Central Highlands has many of the State's premier trout fishing lakes.

Townships and localities include Bothwell, Hamilton, Gretna, Ellendale, Fentonbury, Westerway,

Ouse, Tarraleah, Wayatinah, Bronte Park, Derwent Bridge, Arthurs Lake and the Miena/Great Lake area.

Many historical buildings can be found throughout the Municipality.

Tourist information can be obtained from the Bothwell Tourist Information Centre in Market Place, Bothwell, phone 6259 4033.

Telephone—landline and mobile service are available in most areas.

### **BUILDING/DEVELOPMENT:**

Development within Council area is governed by the Building Code of Australia and the Central Highlands Planning Scheme 1998. Contact the Bothwell Office for application forms and further information.

### **COUNCIL MEETINGS:**

Council meets on the third Tuesday of each month at 10.00am alternating between Bothwell and Hamilton.

Agendas are available from both the Hamilton or Bothwell offices 4 days prior to the meeting. Agendas and confirmed minutes can also be viewed on Councils website ([www.centralhighlands.tas.gov.au](http://www.centralhighlands.tas.gov.au))

Any items to be included on the agenda for Council meetings should be submitted, in writing, to the General Manager. All submissions need to be received to Council by the second Monday of each month.

### **ADVERTISING:**

#### **Newspaper**

Council advertise in the Derwent Valley Gazette, The Mercury, The Examiner, The Advocate, Highland Digest and Council's website ([www.centralhighlands.tas.gov.au](http://www.centralhighlands.tas.gov.au))

#### **Notice Boards**

Notice boards containing both Council information and community information can be found at either Hamilton Council Chambers, 6 Tarleton Street, Hamilton or the Bothwell Council Chambers, 19 Alexander Street, Bothwell.

Community Information Boards can be found at Queens Park, Bothwell, Hamilton Park and Miena.

### **Community Development Grant Applications**

The Community Grants Program provides financial and in-kind assistance to support community facilities, projects, events and programs that have a clear community benefit or need.

#### **Projects must**

- ♦ Demonstrate a direct benefit to the Central Highlands community;
- ♦ Be supported by members of the organisation;
- ♦ Have defined achievable outcomes and financial feasibility;
- ♦ Respond to a clearly demonstrated need and be appropriate to that need;
- ♦ Not duplicate other locally available services; and
- ♦ Applicants must prove the

capacity and expertise to conduct the project.

#### **Amount of Grant**

Assistance will be provided in the form of cash grants or in-kind assistance.

The maximum grant available is up to \$1,000 with Council retaining discretion to approve a higher allocation for an exceptional project.

Funds will be provided to a maximum of half of the project costs. Recurrent grants will only be considered for exceptional projects. Subsequent year funding will only be considered upon the completion of a satisfactory report on the current years funding.

\*The maximum funds that any one Community Group can receive is \$1,000.00 per financial year.

### **Submitting Your Application**

Applications may be submitted all year round and assessed as below: Guidelines and application forms for the Central Highlands Community Grants Program 2011/12 can be downloaded from:

[www.centralhighlands.tas.gov.au](http://www.centralhighlands.tas.gov.au)

For further information, contact Mr Philip Ridyard at the Hamilton Council chambers on (03) 62863202 or email:

[pridyard@centralhighlands.tas.gov.au](mailto:pridyard@centralhighlands.tas.gov.au)

Applications need to be submitted to Council by the last day of the month	Applications will be assessed by the Council in	Council decision and notification will be forwarded in
February	March	April
May	June	July
August	September	October
November	December	January

## Hamilton

Population: approx. 190

### SPORT & RECREATION FACILITIES:

Hamilton Recreation Ground  
Tennis Court

### HALLS/MEETING PLACES:

Hamilton Town Hall  
NRM Resource Centre

### FOOD/DINING/RETAIL:

Hamilton Inn Ph: 6286 3204  
Hamilton Store & Post Office,  
Ph: 6286 3236  
Glen Clyde House Ph: 6286 3276  
Cluny Farm Cafe Ph: 6286 3206  
Jackson's Emporium Ph: 6286 3232

Country Cottage Collection

Ph: 6286 3270

Over the Back Accommodation

Ph: 6286 3332

Cherry Villa Ph: 6286 3418

McCaulley's Cottage, Arcadia

Holiday House, Kelleher's Cottage &

Bonnie Brae Lodge Ph: 6286 3232

### OTHER FACILITIES:

- ◆ Hamilton Show - held annually in March/April.
- ◆ Public Toilets
- ◆ Camping Facilities
- ◆ Shower/Laundry - coin operated
- ◆ Police Station
- ◆ Treated Water
- ◆ Sewerage Scheme

- ◆ NRM Resource Centre
- ◆ Heritage Centre
- ◆ Open Gardens
- ◆ Weekly door to door Garbage Collection and fortnightly recycling.
- ◆ Volunteer Fire Brigade
- ◆ Intrepid Explorers



## Ouse

Population: approx. 275

### HEALTH CARE:

Central Highlands Community  
Health Centre  
Doctor Surgery and Pharmacy  
Ph: 6287 2010

Regional Healthcare Centre  
"Ash Cottage"

### EDUCATION:

Ouse District School  
Kinder—Grade 6

### CHURCHES:

Anglican  
Roman Catholic

### HALLS/MEETING PLACES:

Ouse Town Hall  
Ash Cottage

### RECREATION &

### SPORT FACILITIES:

- Ouse Country Club Ph: 6287 1219
- Ouse Lawn Bowls

### FOOD/DINING/RETAIL:

Ouse Roadhouse Ph: 6287 1281

### Highlander Centre



Ouse Supermarket Ph: 6287 1205

Ouse Post Office Ph: 6287 1206

Craft Group

### OTHER FACILITIES:

- ◆ Public Toilets
- ◆ Online Access Centre - 6287 1441
- ◆ Ash Cottage
- ◆ Sewerage Scheme
- ◆ Treated Water
- ◆ Weekly door to door Garbage Collection and fortnightly recycling.
- ◆ Rose Garden
- ◆ Great fishing locations nearby at Lake Meadowbank

## Gretna

POPULATION: approx. 105

### SPORT & RECREATION FACILITIES:

Gretna Cricket Club/Football Oval

### HALLS/MEETING PLACES:

St Mary's Church Hall

### CHURCHES:

Anglican

### FOOD/DINING/RETAIL:

Gretna Green Hotel,  
Ph: 6286 1332

Gretna Quality Meats

Ph: 6286 2000

### CLUBS/GROUPS:

Gretna Cricket Club

### OTHER FACILITIES:

- ◆ Public Toilets
- ◆ Town Water Supply (untreated)
- ◆ Weekly door to door Garbage Collection and fortnightly recycling.
- ◆ WWII War Memorial
- ◆ Voluntary Fire Brigade
- ◆ Play Ground



## Ellendale/Fentonbury/Westerway

**POPULATION:** Approx.600

**EDUCATION:**

Westerway Primary School

**CHURCHES:**

Anglican and Catholic at Ellendale.

**HALLS/MEETING PLACES:**

Ellendale Town Hall

Westerway Town Hall

**OTHER FACILITIES:**

- ◆ Public Toilets
- ◆ Tennis Court
- ◆ Camping Facilities at Dunrobin
- ◆ Weekly door to door Garbage Collection and fortnightly recycling
- ◆ Playgroup
- ◆ Rec ground - Kingsholme Retreat

- ◆ Voluntary Fire Brigade

**FOOD/DINING/RETAIL:**

Ellendale Store & Post Office

Ph: 6288 1241

Westerway General Store

Ph: 6288 1113

Westerway Roadhouse

Ph: 6288 1115

Vinnies second hand clothing store

## Derwent Bridge/Bronte Park

**FOOD/DINING/RETAIL:**

Derwent Bridge Chalet Ph: 6289 1000

Derwent Bridge Roadhouse

Ph:6289 1125

Derwent Bridge Hotel Ph: 6289 1173

Bronte Chalet Ph: 6289 1126

Bronte General Store Ph: 6289 1129

Highland Cabins Ph: 6289 1029

**OTHER FACILITIES:**

- ◆ Public Toilets
- ◆ Lake St Clair National Park
- ◆ Caravan park
- ◆ Walking the wilderness
- ◆ Waste Transfer Station



## Wayatinah/Tarraleah

Population approx. 90

**EDUCATION:**

By bus to Ouse District School

Regular visiting Pre School

**SPORT & RECREATION FACILITIES:**

- ☞ Wayatinah 6 Hole Golf Course
- ☞ Tennis Court
- ☞ Squash Court
- ☞ Badminton Court
- ☞ Half Basketball Court
- ☞ BMX Track
- ☞ Fishing
- ☞ Swimming Pool for Local Residents

dents

**FOOD/DINING/RETAIL:**

- ◆ Wayatinah Tavern & Store

Ph: 6289 3256

- ◆ Wayatinah Lakeside Caravan

Park Ph: 6289 3317

**CLUBS/GROUPS:**

*The town is serviced by the Wayatinah Sports and Social Club which organizes almost all events in the village. Residents are invited to take part in monthly meetings as well as regular working bees for the betterment of the town as well as for personal enjoyment and social interaction.*

**OTHER FACILITIES:**

- ◆ Public Toilets

- ◆ Picnic Shelter with Free BBQ
- ◆ Local Post Office at General Store
- ◆ Volunteer Ambulance and SES units based in Town
- ◆ Treated Town Water Supply
- ◆ Sewerage System
- ◆ Waste Transfer Station
- ◆ Fortnightly Rubbish Collection
- ◆ Saltas
- ◆ Playground

A new Community Centre incorporating a new local library, a gymnasium and a meeting room



## Miena/Great Lake

**EDUCATION:**

By bus to Bothwell District High School

Kinder - Grade 10

**HALLS/MEETING PLACES:**

Great Lake Community Centre

Steppes Hall

**SPORT & RECREATION FACILITIES:**

Many great fishing locations

**FOOD/DINING/RETAIL:**

Great Lake Hotel Ph: 6259 8163

Central Highlands Lodge

Ph: 6259 8179

Great Lake General Store

Ph: 6259 8149

**OTHER FACILITIES:**

- ◆ Public Toilets
- ◆ Police Station
- ◆ Volunteer Ambulance & Fire Brigade
- ◆ Steppes Stones
- ◆ Inland Fisheries



**CLUBS/GROUPS:**

Central Highlands

Shackowners Association

## Bothwell

**POPULATION:** Approx. 450

**EDUCATION:**

Bothwell District School.- Kinder to Grade 10.

Ph: 6259 5518

**CHILD CARE CENTRE**

Owl Cottage, Ph: 6259 5645

**HEALTH CARE:**

Doctor Surgery and Pharmacy,

Ph: 6259 5520

**LIBRARY:**

Bothwell Branch of State Library

Ph: 6259 5642

**INTERNET:**

Bothwell Online Access Centre

Ph: 6259 5549

**CHURCHES:**

Anglican Catholic, Uniting & Roman

**SPORT & RECREATION**

- Bothwell Swimming Pool  
Seasonal open from mid Dec to March each year.
- Bothwell Recreation Ground
- Bothwell Golf Course

**OTHER FACILITIES:**

- Queens Park
- Public Toilets
- Bothwell Caravan Park,  
Ph:6259 5503
- BBQ facilities
- Post Office, phone: 6259 5609
- Police Station
- Fire Station
- Volunteer Ambulance Station
- Independent Living Units
- Lions Community Car
- Fully treated water
- Sewerage Scheme
- Australasian Golf Museum
- Croakers Alley
- Mt Adelaide Lookout
- Weekly door to door Garbage Collection and fortnightly recycling.
- Craft Shop
- Garden Nursery—Abbergavenny
- Spin-In: Held bi-annually

**HALLS/MEETING PLACES:**

Bothwell Town Hall  
CWA Hall  
Bookmakers Room, Castle Hotel

**FOOD/DINING/RETAIL:**

Castle Hotel, Ph: 6259 5502  
Bothwell Bakery, Ph: 6259 5611  
Bothwell Super Store, Ph: 6259 5508  
Bothwell Garage, Ph: 6259 5599



The Grange, Ph: 6259 5556

Elm Corner Café Ph: 6259 4028

**CLUBS/GROUPS:**

- ☞ Lions Club
- ☞ Fishing Club
- ☞ Clay Target Shooting Club
- ☞ Hunting Club
- ☞ Historical Society
- ☞ Tourism Committee
- ☞ CWA
- ☞ Golf Club
- ☞ Parents & Friends Association
- ☞ Central Hawks Football Club

Phone Council Office on 6259 5503 for further information and contact numbers.

## Volunteers for Clubs & Groups - All Welcome

Phone Council Offices for details

- |   |  |
|---|--|
| * Australasian Golf Museum Committee                    | * Central Hawks Football Club                  |
| * Bothwell Country Women's Association                  | * Bothwell Historical Society                  |
| * Bothwell Golf Club                                    | * Bothwell Online Access Centre                |
| * Bothwell Volunteer Ambulance                          | * Bothwell Lions Club                          |
| * International Highland Spin-In                        | * Bothwell Licensed Anglers Club               |
| * Central Highlands Hunting Association                 | * Bothwell Gun Club                            |
| * Ellendale Country Women's Association                 | * Gretna Cricket Club                          |
| * Derwent Catchment NRM Group                           | * Central Highlands Community Development Inc. |
| * Central Highlands Shackowners Association             | * Ouse Online Access Centre                    |
| - Secretary - Rod Shadbolt                              | * Central Highlands Regional Health Services   |
| - President - Ken Bye                                   |  |
| * Bronte / Brady's / Dee Lagoon Shackowners Association |  |
| * Miena Volunteer Ambulance                             |  |
| * Ouse Country Club                                     |  |
| * Ouse District School Parent Child Sessions            |  |
| * Great Lake Community Centre                           |  |

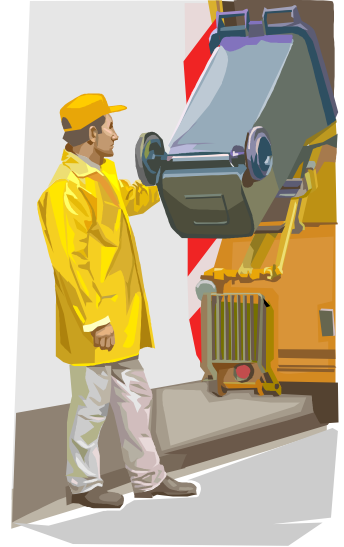
## Waste Management Services

Roadside Door to Door Household Mobile Garbage Bins are collected weekly and Recycling Collection is collected fortnightly on a MONDAY from Gretna, Fentonbury, Ellendale and Westerway (North). On a TUESDAY from Bothwell, Hamilton & Ouse. Osterley & Wayatinah collected fortnightly.

The Mobile Garbage Bin (Wheelie Bin) has been issued to each property on the collection service, rubbish must be placed in the bin provided.

### Specifications:

- ☞ Residents are asked to have their wheelie bins and recycle bins placed roadside by 6.00am on the day of collection
- ☞ Garbage pick-up is limited to one Council issued wheelie bin per household.
- ☞ The recycling bin should only contain tins, aluminum cans, recyclable plastic, bottles and glass.
- ☞ *Refuse is the responsibility of the owner until the contractor collects it. Loose rubbish should be cleaned up by the owner.*



ENTRY FEES TO ALL SITES FOR NON-RESIDENTS/NON-RATEPAYERS	
Car	\$7.00
Trailer Single Axle/Utility/Van	\$12.00
Trailer Multi Axle	\$15.00
Truck Single Axle	\$50.00
Truck Multi Axle	\$60.00
Compactor Trucks <7m3	\$75.00
Compactor Trucks >7m3	\$140.00
Clean Fill	No Charge

## Business Development

Business mentoring is available for small businesses from Business & Employment. Advice and support is also provided if you are considering buying a business or planning to open a new business.

To arrange a visit from a consultant, or to make an appointment to see them in their local visiting rooms please call Olivia Walsh on 0408 850 028.

## Building/Planning/Plumbing

Building permits are required for demolitions, alterations, additions, changes of use and all new buildings. Before commencing any building project, it is advisable to contact Council’s Development and Services Department to find out just what is required for your particular job.

It is important to note that planning approval will need to be obtained before most building plans can proceed. Planning permits are required for new and changed “use and development” under the Central Highlands Planning Scheme 1998. The Scheme can be accessed on Council’s website.

Plumbing permits must be obtained before work commences on any project. To obtain a permit, plans should be submitted to the Council showing the relevant details of the proposed works.





## Dog Control & Registration

The Central Highlands Council recognizes the importance of dogs within the community, especially the role they play within the family environment as companions, and as working dogs on farming properties.

Council encourages owners to comply with the Dog Control Act 2000 and ask that owners take responsibility of their dogs to ensure all rights of members of the community are recognized and respected.

To help minimise the potential of problems caused by dogs, it is important that all dog owners ensure that their dogs are:-

- (a) Registered;
- (b) Not allowed to cause a noise nuisance;
- (c) Kept under effective control at all times;
- (d) Not to attack a person or animal; and
- (e) Not allowed to roam free during the day or night

The Animal Control Officer regularly patrols all areas of the municipality and an after hours service is available in case of an emergency.

### SOME FREQUENTLY ASKED QUESTIONS:

#### **Dog Control Act 2000**

The Dog Control Act 2000 states it is a legal requirement for all dogs in Tasmania over the age of six (6) months to be registered by their owner with the local council.

*It is the owner's responsibility to provide proof of the dog's age.*

Registration is designed to assist owners, dogs and the community.

Registration Fees		
Tariff	Paid By 31st July	Paid After 31st July
Domestic dog (desexed)	\$12.00	\$22.00
Domestic dog (not desexed)	\$32.00	\$52.00
Pensioner (1st Dog Only)	\$7.00	\$12.00
Working dog which is kept for the purpose of working farm stock	\$7.00	\$22.00
Greyhound (TGRA registered)	\$7.00	\$22.00
Registered Breeding Dog (TCA registered and dog owner holding current membership of the TCA)	\$7.00	\$22.00
Special Assistance Dog (Guide Dog/Hearing Dog)	Nil	Nil
Declared Dangerous Dog	\$1,000.00	\$1,000.00

COUNCILLOR		ADDRESS	PHONE	FAX	EMAIL
Deirdre Flint <b>(Mayor)</b>		RA 2120 Hollow Tree Road HOLLOW TREE TAS 7140	0418 319 832	6286 3375	<a href="mailto:dflint@centralhighlands.tas.gov.au">dflint@centralhighlands.tas.gov.au</a>
Andrew Downie <b>(Deputy Mayor)</b>		PO Box 170 RICHMOND TAS 7025	6260 4170 0409 971 474		<a href="mailto:glenelgtasie@bigpond.com">glenelgtasie@bigpond.com</a>
Jim Allwright <b>(Councillor)</b>		PO Box 29 OUSE TAS 7140	6288 1392		<a href="mailto:jamesallwright@centralhighlands.tas.gov.au">jamesallwright@centralhighlands.tas.gov.au</a>
Tony Bailey <b>(Councillor)</b>		7 Torlesse Street HAMILTON TAS 7140	6286 3284 0418 863 284		<a href="mailto:tbailey@centralhighlands.tas.gov.au">tbailey@centralhighlands.tas.gov.au</a>
Richard Bowden <b>(Councillor)</b>		RA 2925 Highland Lakes Rd BOTHWELL TAS 7030	6259 5542	6259 5596	<a href="mailto:rbowden@centralhighlands.tas.gov.au">rbowden@centralhighlands.tas.gov.au</a>
Geoff Herbert <b>(Councillor)</b>		16 Patrick Street BOTHWELL TAS 7140	6259 5599	6259 4051	<a href="mailto:gherbert@centralhighlands.tas.gov.au">gherbert@centralhighlands.tas.gov.au</a>
Joe Jacka <b>(Councillor)</b>		80 Marriotts Road ELLENDALE TAS 7140	6288 1554		<a href="mailto:jjacka@centralhighlands.tas.gov.au">jjacka@centralhighlands.tas.gov.au</a>
Ian McMichael <b>(Councillor)</b>		"Leintwardine" PO Box 13 OUSE TAS 7140	6287 1207 0428 574 043	6287 1288	<a href="mailto:imcmichael@centralhighlands.tas.gov.au">imcmichael@centralhighlands.tas.gov.au</a>
Loueen Triffitt <b>(Councillor)</b>		33 River Street HAMILTON TAS 7140	6286 3275 0409 269 702		<a href="mailto:ltriffitt@centralhighlands.tas.gov.au">ltriffitt@centralhighlands.tas.gov.au</a>

## Rates and Charges

Rates and Charges are set annually and are published in all State Newspapers.

The Rates notices are sent out quarterly.

**Instalment 1 Due:** 31st August 2013

**Instalment 2 Due:** 30th November 2013

**Instalment 3 Due:** 28th February 2014

**Instalment 4 Due:** 30th April 2014

Payments can be made by four installments by using the tear off slips on the bottom of the notice. Payment methods are detailed on the back of the notice.

### Pensioner Rate Remissions

Through Council, the State Government gives a pensioner rates remission to all eligible pensioners. Basically all pensioners with a concession card or a Department of Veterans' Affairs gold card are eligible.

The pensioner must own and occupy the house as their principal place of residence as at the 1st July in the financial year.

Applications for the remission must be submitted by the 31st March of each year.

## Change of Address

If you have moved into the Central Highlands Council area, or within the Municipality, have you advised the following organisations of your change of residential address and/or mailing address?

- ◆ State Electoral Office
- ◆ Australia Post
- ◆ Central Highlands Council
- ◆ Telstra
- ◆ Aurora
- ◆ State Titles Office

*Please advise direct to relevant Offices listed.*



## Newsletter - The Highland Digest

The Highland Digest is a monthly newsletter produced for the Municipality by Centralinc at the Ouse Online Access Centre.

Anyone can submit articles, photographs, advertisements, stories etc. by the closing date each month.

The Highland Digest can be purchased from most local

businesses or a subscription service is available.

The cost of the publication is 50¢ per issue. Contact: Ouse Online Centre  
Phone: 6287 1441.

## Local Government Elections

### Are you enrolled to Vote?

If you are currently on the State Electoral roll for an address in the municipal area, or on the Council General Manager's roll, you are enrolled for local government elections.

You may apply to enroll on the General Manager's Roll if:

- (a) You own or occupy land in the municipal area (but are not eligible to be on the State roll for the area); or
- (b) You are the nominated representative of a corporate body which owns or occupies land in the municipal area.

To enroll on the General Manager's

Roll, forms are available at both Council offices.

If you have changed your name or address, since the last election please advise the State Electoral Commission for the State Electoral Roll or the Council for the General Manager's Roll.

### OUSE ONLINE COMMUNITY ACCESS CENTRE OPENING HOURS

Tuesday	9.00am - 5.00pm
Wednesday	9.00am - 1.00pm
Thursday	9.00am - 1.00pm
Friday	9.00am - 12.00pm
Saturday	10.00am - 1.00pm

For booking please telephone Brian on 6287 1441

[www.ouse.tco.asn.au](http://www.ouse.tco.asn.au)

**We also have a borrowing library for locals**



### BOTHWELL ONLINE COMMUNITY ACCESS CENTRE OPENING HOURS

Tuesday	11.00am - 3.00pm
Wednesday	1.00pm - 5.00pm
Friday	11.00am - 3.00pm

For free assistance and/or use of equipment visit the Bothwell Online Access Centre located in the Bothwell District High School grounds.

Contact: Tonia Branch, Co-ordinator

Phone: 62595549

E-mail: [Bothwell@tco.asn.au](mailto:Bothwell@tco.asn.au)

[www.bothwell.tco.asn.au](http://www.bothwell.tco.asn.au)

## Cemeteries

The Council only manages and maintains the Bothwell Cemetery. Records and burials are organized through the Bothwell Office.

All other Cemeteries are run by the local Churches.

## Independent Living Units

Council currently operate six independent living units at Archer Drive, Bothwell and 3 units behind the Health Centre at Ouse.

The Committee are continuously working on other applications for further Units.

The Department of Health & Human Service (Housing Tasmania) also operate three units located at Ouse and three located at Bothwell.

## Rivers Run Touring Association

**Rivers Run** Touring Route - located in the heart of Tasmania is one of Australia's oldest culturally diverse charming but exciting regions.

Visit the Rivers Run Web Site for more information:

[www.riversrun.net.au](http://www.riversrun.net.au)

## Immunisation

Vaccinations are provided in accordance with National Health and Medical Research. Council's Immunisation program is available free to all persons.

Further details can be obtained from the Development and Environmental Services Office.

## Justice of the Peace

Council currently has one Justice of the Peace working in the Hamilton Office.

There are a few residents in the Municipality who are Justices' of the Peace.

For up-to-date contact details for current Justices' of the Peace or Commissioners' of Declarations, please contact the Justice Department on Ph: 1300 336 611.

## DO YOU NEED HELP?

**Relationships Australia**

**Rural support worker**

03 6336 7000 or 0429 191 525

maxb@relias.com.au

**Lifeline 24 hour service**

131114 or 6224 3450 office hours

**Standby 24 hour crisis** 0400 183 490

**Victims of Crime** 1300 300 238

**Disability Services** 1300 799 530

**Rural Alive and Well** 62593014

**Mission Australia** 131124

**Grandparents Raising Grandchildren**

03 6234 7948

grgsouth@netspace.net.au

**Parents Helpline - 24 hours**

1300 808 178

**Salvation Army** 137258

**St. Vincent De Paul**

Calls for assistance 6272 6728

**Red Cross** 6235 6077 or

**Freecall** 1800 246 850

**Mental Health Services**

**Freecall** 1800 332 388

**Anglican Parish of Hamilton** Ph: Mrs Jean Hayes  
on 6286 3205

**Centrelink Bridgewater** 6268 8599

**Commonwealth Legal Service** 62232500

**Gambling Helpline Tasmania** 24 hours

**Freecall** 1800 858 858

**Alcohol & Drug Services**

**Freecall** 1800 811 994

**Anglicare** 6213 3555

**Freecall** 1800 243 232

**Workskills Bridgewater**

6263 5785

**Kids Helpline**

**Freecall** 1800 551 800

**Child & Family Services**

**Freecall** 1800 001 219

**Commonwealth Respite and Carelink**

**Centres**

**Freecall** 1800 052 222

**Emergency Respite support outside**

**business hours**

**Freecall** 1800 059 059

**Quitline** 137 848

**Beyond Blue** 1300 224 636

\*\*\*\*\*

### **CATHOLIC DERWENT VALLEY / CENTRAL HIGHLANDS PROGRAM:**

**Contact: Father Greg Barker 62 612 326 Emergencies 0417 321 209**

\*\*\*\*\*

**ST. LUKE'S UNITING CHURCH: The Rev. Meg Evans - 62 541177 or 0428 100983**

**Bothwell Contact - Mrs. Barbara Fowler 62 595577**

\*\*\*\*\*

**ANGLICAN PARISH: Southern Midlands BOTHWELL: - St Michael's & All Angels**

**Church Service Dates & Time are published in the Highland Digest**

## Health Services in the Central Highlands

### Central Highlands Community Health Centre - (CHCHC)

**Location:** 6896 Lyell Highway, Ouse    **Telephone:** (03) 6287 2010 **Fax:** (03) 6287 2038

### Central Highlands General Practice

**Location:** 6896 Lyell Highway, Ouse    **Telephone:** (03) 6287 2035 **Fax:** (03) 6287 1355

#### Registered Nurse Coverage:

Ouse: 8am to 6pm, Mon – Fri only

Services available but not limited to blood collection, blood pressure checks, health checks, wound care, emergency care, health service referral.

#### GP Coverage:

Ouse: Mon, Tue, Wed, Thu (9am-1pm and 2pm-5pm) and Fri (9am-12pm)

Bothwell: Mon-Tue (2pm-5pm), Wed and Fri (9:30am-12:30pm)

#### Other Services:

##### Child Health Nurse:

1 day per month by appointment. Will do home visits

##### Community Nursing:

Home help and home maintenance from referral to community nurses and EACH CACP Program

##### Day Centre/s:

The Highlander Centre now operates from CHCHC. 1 day a week with outreach centres based at Bothwell and Bron-  
te Park. Phone 6287 1301 for details of venues and times and transport requirements.

##### Diabetes Educator:

Monthly at CHCHC and Bothwell

##### Physiotherapy:

Available at New Norfolk - GP referral required

##### Podiatry:

Monthly service by appointment, client may need GP referral for additional service.

Monthly service available at Ouse and Bothwell.

##### Social work:

1 day per week. Appointment required. Will do home visits.

##### Telehealth:

Units based in CHCHC and Bothwell, contact manager for further information on access.

##### Transport:

New service with increased availability, phone 6287 for bookings and information about referral and availability.

##### Family and Youth Health:

Health Promotion Officer – Youth, based at Ash Cottage, phone 6287 2001 for further information. Will do home visits.

**Volunteers welcome phone (03) 6287 2001**

## Council Offices

### Administration and Finance/Works and Services Office

6 Tarleton Street, Hamilton 7140

**Telephone:** (03) 6286 3202, **Fax:** (03) 6286 3334

**Email:** council@centralhighlands.tas.gov.au

General Manager -	Mrs. Lyn Eyles
Works Manager-	Mr. Jason Branch
Works Supervisor -	Mr. Barry Harback
Finance Manager -	Mr. Chris Absolom
Office Staff -	Mrs. Casey Bryant
	Ms. Sharee Nichols
	Mrs. Tania Whelan



Picture of Hamilton Office

### Development & Environmental Services Office

19 Alexander Street, Bothwell 7030

**Telephone:** (03) 6259 5503, **Fax:** (03) 6259 5722

**Email:** council@centralhighlands.tas.gov.au

Building/Plumbing Inspector -	Mr. Graham Rogers
Environmental Health Officer -	Mr. James Wood
Planning Officer -	Ms. Jacqui Tyson
Office Staff -	Mrs. Kathy Bradburn
	Ms. Jodi Hill
	Mrs. Joanne Housego



Picture of Bothwell Office

**Office Hours: 8.00am - 5.00pm Cashier closes at 4.30pm.**

The Central Highlands Council values feedback and comments in relation to this information package. The following feedback and/or request form is included if you would like to make comment or would like additional information.

Thank you for your assistance.

Date: \_\_\_\_\_

Name: \_\_\_\_\_

Address: \_\_\_\_\_

\_\_\_\_\_ Post Code: \_\_\_\_\_

Telephone: \_\_\_\_\_ Fax: \_\_\_\_\_

Email: \_\_\_\_\_

Comments/Feedback: \_\_\_\_\_

\_\_\_\_\_

\_\_\_\_\_



*Cut out and return completed form to either Council Office.*