

Central Highlands Council

AGENDA – ORDINARY MEETING – 20th OCTOBER 2015

Agenda of an Ordinary Meeting of Central Highlands Council scheduled to be held at Bothwell Council Chambers, on Tuesday 20th October 2015, commencing at 9am.

I certify under S65(2) of the Local Government Act 1993 that the matters to be discussed under this agenda have been, where necessary, the subject of advice from a suitably qualified person and that such advice has been taken into account in providing any general advice to the Council.

Lyn Eyles
General Manager

1.0 OPENING

2.0 PRESENT

3.0 APOLOGIES

4.0 PECUNIARY INTEREST DECLARATIONS

In accordance with Regulation 8 of the Local Government (Meeting Procedures) Regulations 2005, the Mayor requests Councillors to indicate whether they or a close associate have, or are likely to have a pecuniary interest (any pecuniary or pecuniary detriment) in any item of the Agenda.

5.0 COMMITTEE

Regulation 15 of the Local Government (Meeting Procedures) regulations 2005 provides that Council may consider certain sensitive matters in Closed Agenda which relate to:

- Personnel matters, including complaints against an employee of the Council;
- Industrial matters relating to a person;
- Contracts for the supply and purchase of goods and services;
- The security of property of the Council
- Proposals for the Council to acquire land or an interest in the land or for the disposal of land;
- Information provided to the Council on the condition it is kept confidential;
- Trade secrets of private bodies;
- Matters relating to actual or possible litigations taken by or involving the Council or an employee of the Council;
- Applications by Councillors for leave of absence;
- The personal affairs of any person.

The decision to move in Closed Council requires an absolute majority of Council.

5.1 MOTION INTO CLOSED MEETING

Moved **Clr**

Seconded **Clr**

THAT Council move into Committee to discuss confidential matters in accordance with Regulation 15 of the Local Government (Meeting Procedures) Regulations 2005.

5.2 MATTERS DISCUSSED IN CLOSED MEETING

Moved **Clr**

Seconded **Clr**

THAT pursuant to Regulation 15 (1) of the Local Government (Meeting Procedures) Regulations 2015, Council close the meeting to the public.

Items for Closed Session:

- 1 Confirmation of Confidential Minutes of Council's Ordinary Meeting held on 15 September 2015 Regulation 15 (2) (g)
 - 2 Personnel Matters Regulation 15 (2) (a)
 - 3 Contract for the provision of services 15 (2) (d)
 - 4 Quotes for replacement of vehicles 15 (2) (b)
-

5.3 MOTION OUT OF CLOSED MEETING

Moved **Clr**

Seconded **Clr**

THAT Council move out of Committee and resume the Ordinary Meeting.

OPEN MEETING TO PUBLIC

The Meeting will be opened to the public at 10.00am

6.0 IN ATTENDANCE

10.30 am - Melinda Anderson (CEO DST)

11.00am - Sarah McDonald NBNCO to provide an update on the NBN

6.1 PUBLIC QUESTION TIME

7.0 MAYORAL COMMITMENTS

15th September 2015	Council Meeting at Hamilton
17th September 2015	Hon. Rene Hidding re Highland Lakes Road.
5th October 2015	Health Meeting.
8th October 2015	Southern Tasmanian Councils Authority - Infrastructure Committee
12th October 2015	Melinda Anderson - Destination Southern Tasmania.

13th October 2015	Hon. Jeremy Rockcliff - Parliament House.
17th October 2015	Presentation of Prizes - Highlands Regional Craft Fair at Ouse.
20th October 2015	Plant Meeting – Bothwell

Interview with Mercury Newspaper re bushfire at Osterley Interview with ABC Radio re bush fires in the area - highlighting the need to all have our fire plans ready to and act when required.

7.1 COUNCILLORS COMMITMENTS

Deputy Mayor A J Downie

17 th September 2015	Meet Kingfisher Explorations - Hamilton SWSA – Glenorchy
18 th September 2015	Multicultural Forum - Town Hall
14 th October 2015	Centenary of Anzacs Exhibition - Derwent Entertainment Centre

7.2 GENERAL MANAGER COMMITMENTS

15 th September 2015	Council Meeting
23 rd September 2015	Audit Panel Meeting
24 th September 2015	Meeting with developer
12 th October 2015	Meeting Melinda Anderson DST

8.0 NOTIFICATION OF COUNCIL WORKSHOPS HELD

8.1 FUTURE WORKSHOPS

9.0 MAYORAL ANNOUNCEMENTS

10.0 MINUTES

10.1 RECEIVAL DRAFT MINUTES ORDINARY MEETING

Moved **Clr** Seconded **Clr**

THAT the Draft Minutes of the **Ordinary Meeting** of **Council** held on **Tuesday 15th September 2015** be **received**.

10.2 CONFIRMATION OF DRAFT MINUTES ORDINARY MEETING

Moved **Clr** Seconded **Clr**

THAT the Draft Minutes of the **Ordinary Meeting** of **Council** held on **Tuesday 15th September 2015** be **confirmed**.

10.3 RECEIVAL DRAFT AUDIT PANEL MEETING

Moved C/r

Seconded C/r

THAT the Draft Minutes of **Audit Panel Meeting** of **Council** held on **Wednesday 23rd September 2015** be **received**.

11.0 BUSINESS ARISING

12.0 NRM REPORT

Moved C/r

Seconded C/r

THAT the **NRM Report** be **received**.



Derwent Catchment Natural Resource Management Committee Inc.
PO Box 22 Hamilton Tas 7140 Phone: 6286 3211

Report for Central Highlands Council 8th September to 15th October 2015

General Business:

We have been busy making preparations for the AGM that is coming up this week. This has involved developing an agenda, revising the membership prospectus and advertising the meeting one month ahead on 16th Sept in Tas Country, The Gazette and the Central Highlands Digest. We have emailed all members and the wider Derwent Catchment community that we have contact details for. Paper copies, including an invitation letter, were sent as a formality and to ensure those people who do not have access to email are aware of the meeting. We have had many responses and are expecting over 30 people to attend.

DCNRMC has been contacted by Trish Clemments who is seeking to do volunteer work with our committee in the NRM space. She has recently finished a Masters at UTAS in modelling river condition and has a vast range of skills including a history in microbiology in the food industry. Trish is researching some info on the Clyde River and will assist us in preparing a revegetation plan for the Clyde.



Weed Management Program

Kathy has taken a step back from the facilitation aspect of the weeds program. Josie & Eve have met with Dave Graddon from Hydro and he has allocated \$25,000 for weed control in the Central Highlands, largely the Poatina Fire, and \$10,000 for Orange Hawkweed work around Butlers Gorge. We are working to secure funds from other agencies and have lobbied Parks (including CLS) to support the Poatina Fire Project.

Revegetation at Clearview

The revegetation program at Clearview dairy near Gretna is now underway. John and Eve have been working hard to ensure that the project started on time and that the planting phase was successful. 1000 native plants are now in the ground and represent Stage One of the reveg effort proposed for the site. A project update has been sent to Taswater, who supported the works.

Dairy Cares for the Derwent

Landcare Tas have approached us regarding a Premier visit showcasing Dairy Cares on November 5th. The visit is scheduled for Grant Roger's dairy farm near Ouse.

Nursery

All the available seed from the Miena Cider Gum capsules has been propagated at the Hamilton Nursery. The seeds are differentiated by GPS point location and details have been recorded to ensure we can assess the germination rates relative to location. Other native species have also been propagated, our nursery stock production is officially underway!

NRM South

We have met with Ken Moore regarding the coming year's program and secured some additional project activities in the region. Ken is meeting with the Water for Profit program on the 2nd October as NRM South have allocated funds from this year's budget to run a drainage workshop for the Midlands however this may be a double up with Water for Profit. Ken may allocate some of this funding to workshops in Hamilton based on the Water for Profit program. This aligns with discussions with Leanne Sherriff from Macquarie Franklin to ensure that DCNRMC is part of extension in the Derwent Catchment.

Ken has also been able to support us with some funds to outsource DCNRMC website updating and communications.

Bushfire Management Forum

We have supported Landcare Tas in facilitating and promoting the Bushfire Management Forum which was held in Ellendale on the 6th October. There was a good turn out and the event ran well, with positive feedback received.

Landcare conference

Josie gave a presentation on Dairy Cares at the Landcare Conference on the weekend of the 10-11th October. Dairy Cares was a finalist for the Australian Government sustainable farm practices award, but Robbie Toll (very deservedly) won on the evening. The conference was a great opportunity to network with other people working in the NRM space and to inform others about what the committee is doing in the Derwent Catchment.

Grant applications

Spanish Heath eradication at Ellendale continuation – 30/06/2015 - Tas Landcare grant - unsuccessful
Clearview restoration project - 30/06/2015 – Tas Landcare grant - unsuccessful

Yours Sincerely,

Josie Kelman, Facilitator, Derwent Catchment NRM Committee 0427 044 700

Eve Lazarus, Projects Officer, Derwent Catchment NRM Committee 0429 170 048

13.0 FINANCE REPORT

Moved **Clr**

Seconded **Clr**

THAT the Finance Report be received.

14.0 DEVELOPMENT & ENVIRONMENTAL SERVICES

In accordance with Regulation 25(1) of the Local Government (Meeting Procedures) Regulations 2005, the Mayor advises that the Council intends to act as a Planning Authority under the Land Use Planning and Approvals Act 1993, to deal with the following items:

Moved **Clr**

Seconded **Clr**

THAT the Development & Environmental Services Report be received.

14.1 PROGRESSION OF THE CENTRAL HIGHLANDS INTERIM PLANNING SCHEME

Report By:

D Mackey (Manager Strategic Projects)

Issue:

Public notification of the Central Highlands Interim Planning Scheme 2015.

Update

In early 2014 Council submitted its Draft Interim Planning Scheme to the Planning Minister requesting that it be declared an Interim Planning Scheme, alongside the eleven other Southern Tasmanian Councils' planning schemes.

In early 2015 the Minister issued a formal Directions Notice requesting that Council make certain changes to the draft interim scheme before it is declared, as per normal procedure. Council discussed the changes through the Planning Committee and then at a Council meeting. The changes related to both the ordinance and the maps. The amendments were made and on the 22nd of September the Minister was advised accordingly.

Advice has now been received from the Tasmanian Planning Commission that it is intended that the Central Highlands Interim Planning Scheme 2015 will be gazetted on Wednesday 28 October 2015, with the 42-day public notification period commencing on Saturday 7 November.

Public Exhibition

Council is required to advertise the public exhibition of the Interim Planning Scheme in a local daily newspaper. Council often places advertisements in the three Tasmanian daily newspapers – given that property in the highlands lakes area is used and owned by people from all over the State.

Council must have a copy of the scheme available at its offices during the exhibition period. The scheme will also be able to be viewed at the Tasmanian Planning Commission offices in Hobart.

It is envisaged that many members of the public will choose to view the scheme through the government's new 'iplan' website. All of the new planning schemes in the state are now stored on a central server within the State Government. Similarly to the State's legislation website, this will now be the one true and up-to-date version of each planning scheme is stored and accessed by users. The public notification advertisements for the interim planning scheme will include the iplan website details and Council's own website will have a link directly to its scheme within iplan.

Council can choose to add to the above exhibition process, and it is recommended that 'information drop-in sessions' be held around the municipality, due to its large spatial extent – in a similar fashion to the sessions held in mid-2013 for the informal consultation on the draft scheme. These ought to be approximately in the middle of the six-week exhibition period, giving time for members of the public to receive the message that there is an interim scheme available for viewing, yet also giving time to compose any submissions they might wish to make following the information sessions.

It is proposed that the information drop-in sessions be held as follows:

- Miena: Wednesday 2 December, 2:00pm to 4:00pm.
- Bothwell: Wednesday 2 December, 5:00pm to 7:00pm.
- Hamilton: Thursday 3 December, 5:00pm to 7:00pm.

Submissions

Members of the public will be able to make submissions either online through the iplan website or through a more traditional letter or email direct to Council. Following the exhibition period the submissions will need to be assessed and Council, as the planning authority, must form a view on them.

It is likely that Council will need to hold an elected-member workshop to properly consider the issues raised in the submissions, and then formally endorse the outcomes (including its formal view on them) at a subsequent Council meeting. The outcome of this process will be a statutory report to the Tasmanian Planning Commission. The Commission will then start its process to determine the issues raised. As public exhibition period will end in mid-December, the assessment and consideration of submissions will have to occur in early 2016.

Councillors are reminded that the Interim Planning Scheme will not be finalised and will remain 'interim' for its life. However, this will only be for, perhaps, 12 or 18 months as it will be superseded by the statewide planning scheme currently under development by the State's Planning Taskforce. The abovementioned process at the Tasmanian Planning Commission will not be the usual thorough and in-depth analysis of all submissions with a statutory hearing for each one. Doing this for each interim scheme would far exceed the resources available to the State, and would be a waste of resources given the looming introduction of the statewide scheme. Instead, the Commission process will focus on identifying and resolving the urgent and/or critical issues with the interim planning scheme. Council's views on this aspect of each submission will be important. Some matters might subsequently be dealt with as 'urgent amendments', some through the formal planning scheme amendment process, and yet others that are agreed as being neither urgent nor critical might be set aside to be dealt with in the future. Note that issues pertaining to regional provisions will need to be dealt with regionally, i.e. with the involvement of all Southern Councils.

IPLAN SESSION FOR COUNCILLORS AND STAFF

Tasmanian Planning Commission officers responsible for iplan have been holding information / training sessions for each Council as their interim schemes are declared. All elected members and relevant Council staff are encouraged to attend.

Commission officers have advised they are able to come to Bothwell on Tuesday 10 November, at 10:00am, to run the session. Approximately two hours would be needed. This would tie-in with the Planning Committee meeting that starts at 9:00am on that day.

Recommendation

Moved **Clr**

Seconded **Clr**

THAT Council:

1. Hold information drop-in sessions as part of the Public Exhibition process for the Central Highlands Interim Planning Scheme 2015, as follows:
 - Miena: Wednesday 2 December, 2:00pm to 4:00pm.
 - Bothwell: Wednesday 2 December, 5:00pm to 7:00pm.
 - Hamilton: Thursday 3 December, 5:00pm to 7:00pm.
2. Advertise the Public Exhibition period in the three daily newspapers in Tasmania.
3. Accept the Tasmanian Planning Commission's offer to hold an information/training session for Councillors and relevant staff on Tuesday 10 November at 10:00am, at Bothwell.

14.3 LUPAA

Below is a copy of a letter being sent by LGAT to the Legislative Council on the Land Use Planning and Approvals Amendment (Tasmanian Planning Scheme) Bill.

For Information



Our Ref: KS:CA
File No.:

12 October 2015

Emailed to All Members
Legislative Council
Tasmania

Dear Member

Land Use Planning and Approvals Amendment (Tasmanian Planning Scheme) Bill

I am writing to clearly state the position of the Local Government Association of Tasmania (LGAT) regarding the *Land Use Planning and Approvals Amendment (Tasmanian Planning Scheme) Bill 2015*. LGAT are supportive in principle of the legislative framework proposed for establishing a single Tasmanian Planning Scheme, however the current Bill contains a number of issues that we believe can be resolved to improve the Bill.

Permitted Applications Timeframe

We are extremely disappointed that the Government did not respond to our concerns regarding the reduction of assessment timeframes for permitted development applications from 28 to 21 days. While the introduction of a 'stop clock' mechanism for TasWater referrals is a good response, the proposed minimum timeframe does not take into account the assessment process of planning applications.

It is important to note that assessment timeframes in Tasmania are already significantly less than in other States and were recently reduced from 42 to 28 days. Permitted developments are not the same as exempt developments and require checking against a range of planning controls to verify it is permitted and decide permit conditions. The 28 days allows planning authorities to work with developers and applicants to address deficiencies, problems, issues or clarification without having to resort to the formality of an additional information request.

The Tasmanian Planning Scheme is not yet widely understood and Local Government strongly feels there is a high risk in reducing timeframes before a new system is implemented and tested. The experience of Local Government in relation to the interim planning schemes, on which the Tasmanian Planning Scheme is modelled, is that assessments can be more resource intensive and complex, not less. While the Tasmanian Planning Scheme will purportedly identify more permitted pathways and introduce more consistency, the process requirements remain the same, in itself it does not make things faster. The current assessment timeframe of 29 days should remain.

Regional Strategies

Whilst it is understood that State Planning Provisions apply across the whole of the state, it is considered critical that those provisions do not in any way contradict or prevent the implementation of regional strategies. Section 5A of the Bill provides for the Minister to declare a Regional Land Use Strategy, however there is no link between State Planning Provisions and Regional Land Use Strategies in the Bill and it is silent on how the Regional Land Use Strategies will be kept under regular and periodic review by the Minister.

We understand the content relevant to planning instruments of the current Regional Land Use Strategies is being considered by the Planning Taskforce in its drafting of the Tasmanian Planning Scheme. However, this process is not captured in the Bill. It would be appropriate to include a process for consideration of future Regional Land Use Strategies, where relevant, when drafting future iterations of the State Planning Provisions.

Further, it is considered that a timeframe and process for review of Regional Land Use Strategies should be included in the legislation in order to provide a level of confidence that such reviews will be conducted and a process followed that allows for consultation with the community and planning authorities.

Timeframe for Applications to Lapse

A mechanism for lapsing applications where additional information is not provided by the applicant within a specified time frame is supported. However 5 years is excessive. The draft legislation requires a review of scheme provisions every 5 years so the further information provided at this 5 year extreme may then be inconsistent with revised objectives/provisions of the scheme. A two year time frame would be reasonable and would allow further information requests involving the most time consuming matters to be undertaken (soil testing, flora and fauna seasonal analysis etc).

Review of State Planning Provisions

The review of State Planning Provisions is supported and it is noted that this is an improvement from the current Act where there was no such mechanism for Planning Directives. However, it is considered that a process for review, which includes consultation with Planning Authorities, should be included in the legislation in order to provide a level of confidence that such reviews will be conducted in an appropriate way as is provided for in Section 35P of the Bill in relation to the review of the Local Planning Schedules.

Preparation of Local Planning Schedules

Section 35(2) of the Bill provides that the Minister may direct a Planning Authority to provide a draft Local Provisions Schedule to the Commission within a minimum period of 42 days. This time frame is not sufficient for the initial Local Provisions Schedule to be drafted and then considered and endorsed by Council. A 90 day period would be more realistic.

Structure of the Amendment

It is understood that the amendment has been structured to provide individual parts or divisions in the Act such that each process is individually described. However, this approach has resulted in a number of undesirable outcomes and while it is noted that there have been some improvements to the drafting, the provisions are still repetitive and convoluted, the result being:

- The document is unnecessarily long;
- There is a repetition of definitions for terms; and
- Definitions can be difficult to find, given they are variously located in Section 3, at the beginning of a division or individual part and sometimes within an individual section.

In summary LGAT would like to see the following amendments to the *Land Use Planning and Approvals Amendment (Tasmanian Planning Scheme) Bill 2015*:

- Assessment timeframes for permitted development applications remain at 28 days;
- Inclusion of criteria for State Planning Provisions to be consistent with Regional Land Use Strategies and a timeframe and process for review included in the legislation;
- The timeframes for applications to lapse reduced to 2 years (from 5 years);
- Inclusion of a process for review of the State Planning Provisions which includes consultation with Planning Authorities;
- An increase in the minimum period a Planning Authority must provide draft Local Provisions from 42 to 90 days;

We also maintain our previously advised concerns about the focus on creating the draft State Planning Provisions prior to the review/development of State policies and also the application of PD1, which in our experience tends to trigger more complex decision making pathways and more discretionary applications.

The legislation is the technical, enabling instrument however it contains potentially significant limitations to local planning. The impacts on the ability to provide good local planning will depend on the content of State provisions, and the degree to which local provisions may deviate, which will not be known for some time.

My President, Mayor Doug Chipman and I would be happy to discuss this with you at any time.

Yours sincerely



Dr Katrena Stephenson
Chief Executive Officer

cc -
Minister Peter Gutwein MP, Minister for Planning & Local Government
Dr Tony McCall, Dept of Premier & Cabinet
Ms Lara Giddings MP, Labour Party
Ms Rosalie Woodruff MP, Tasmanian Greens
Ms Brooke Craven, Dept of Justice
Mr Simon Overland, Dept of Justice
Mayor Doug Chipman, LGAT President

14.4 BUS SHELTER AT OUSE

Following consultation with parents of students who catch the school bus from Ouse a location has been determined for the installation of the new bus shelter. The shelter will be located on Council owned land on the pull off area opposite the Lachlan Hotel (see below). It is anticipated that the shelter will be completed prior to Christmas.

For Information



14.5 DES BRIEFING REPORT

PLANNING PERMITS ISSUED UNDER DELEGATION

The following planning permits have been issued under delegation during the past month.

PERMITTED USE

DA NO.	APPLICANT	LOCATION	PROPOSAL
2015 / 00037	J L Blackie, P W Golding	30 Little Pine Lagoon Road, Little Pine Lagoon	Garage - Boat Shed

DISCRETIONARY USE

DA NO.	APPLICANT	LOCATION	PROPOSAL
2015 / 00036 - Disc	Rainbow Building Solutions	Dry Poles Road, Ellendale (CT121227/1)	Dwelling in Rural Zone
2015 / 00033 - Disc	Tasmanian Irrigation Pty Ltd	(Part Of) Land generally following the alignment of Highland Lakes Road (including Nant Lane) from CT11865/1 in the north to CT232224/1 in the east and generally following the alignment of Hollow Tree Road from Bothwell to the intersection of Marked Tree Road	Southern Highlands Irrigation Scheme in Rural and Village Zone and areas subject to Heritage Sites, Heritage Conservation Areas and Riverside, Lakeside and Wetlands Areas

NO PERMIT REQUIRED UNDER PLANNING DIRECTIVE 4

DA NO.	APPLICANT	LOCATION	PROPOSAL

IMPOUNDED DOGS

Following a request by Council to be advised of all dogs impounded at Council's Bothwell and Hamilton pounds and the outcome of the impoundment, please be advised as follows:

There were no dogs impounded

KINGFISHER EXPLORATION

For Information



Kingfisher Exploration Pty Ltd
15 Richards Avenue
Dodges Ferry, TAS
Australia

Dear Land Holder,

I am writing to inform you that Kingfisher Exploration Pty Ltd has applied for and been granted a 'Right to Explore' an area within the Ouse / Hamilton area for Bauxite. When Kingfisher was awarded the Exploration Licence, I was in close contact with a property owner from the area and we arranged a meeting to inform people about this. A meeting was held on Thursday 17th September 2015, at the Ouse Golf Club and was attended by people from around 16 properties within the region.

This note is to inform all of the people that either could not make the meeting or were not able to be informed of it. Due to privacy laws of which I agree with and respect, I cannot attain every ones contact information directly. The Central Highlands Council has agreed to contact you on my behalf of which I am most grateful.

The meeting I held recently at Ouse was aimed at explaining who we are and explain what it means that we have been granted a 'Right to Explore' the area and importantly, what it is we are looking for, why we have chosen to explore the area and what that means for land holders within the area, both in the short term exploration assessment phase as well as what the potential outcomes are. It is my intention to be totally transparent with what we are about and engage fully with landholders in open discussions about the program.

This initial note to you is aimed at giving you information about this and initiating discussions between us. We also require your contact detail in order to engage in communications going forward (more on that below).

About Kingfisher Exploration

Kingfisher Exploration is a small privately owned mineral exploration company based in Tasmania. Kingfisher research, select and apply for mineral exploration projects that are small in scale that have been overlooked by larger companies. It is also a project selection criteria for us that, should a discovery be made, the deposits sought have minimal environmental impact potential and do not negatively impact on Land holders or the local community.

The three Directors of Kingfisher are Kent Wighton, a geologist who has lived on / off in Tasmania for 14 years and is currently permanently based in Tasmania. Sean Westbrook, a geologist who grew up, studied and has worked extensively in Tasmania and Fred Bain, a resource industry professional with over 35 years' experience in developing projects. Collectively the Kingfisher Board have over 65 years of industry experience.

Licence to Explore for Bauxite (EL9/2015)

The Tasmanian Government has granted Kingfisher Exploration a "Right to Explore" an area around Ouse and Hamilton for the mineral Bauxite. Bauxite is the mineral material required to make Aluminium. The Exploration Licence awarded to Kingfisher is known as EL9/2015. Please refer to the attached Land holders information presentation for more details of the area covered by this licence.

An Exploration Licence gives the company a right to explore for minerals. This in no way refers to mining operations. If encouraging results are achieved, the project progressively moves through extensive scientific studies to assess if the project meets the criteria required to apply for a mining licence. This process will be done with complete transparency with any and all landholders.

As part of our conditions to hold the licence, (and what I would do out of respect personally anyway), we are required to inform and discuss with land holders within the area, any and all plans for field work. The company must

also advise Mineral Resources Tasmania of their detailed field work plans and have them approved prior to any work taking place. I would like to be very clear and state that under no circumstances will a Kingfisher employee will ever enter any ones property without the knowledge, understanding and consent from the land holder. At least initially, all work will be undertaken by myself, Kent Wighton.

Bauxite in the Ouse / Hamilton Region

Bauxite in Tasmania was first discovered in the early 1940's around the township of Ouse and at Campbell Town in the states midlands area. No additional work in the Bauxite mineral space was conducted in Tasmania until recently when, a company (Australian Bauxite Limited) explored for and discovered a Bauxite Deposit near Campbell Town. This is the first new Bauxite deposit being developed in Australia for 35 years.

From the 1940's historic reports, mineralization in the Ouse / Hamilton area looks to be very similar to that which was discovered in Campbell Town and this in part, is the reason that Kingfisher have applied to explore the area.

Key characteristics of the deposits we will be looking for are:

- The bauxite mineralization is either on or very near surface and forms a veneer that drapes over and forms the tops of hills within the undulating topography.
- The maximum depth of bauxite to date in the Ouse area is in the order of 4 or 5m (1940's). The average depth at Campbell Town is around 4m from surface.
- The bauxite accumulation is the result of weathering processes on near surface dolerite or basalt. This has occurred and created the flattish tops of hills within the area.
- Accumulation of Bauxite in soils result in the soil being very nutrient poor and very unproductive.
- There is no evidence of single large deposits in either area and the deposits differ significantly from the much larger bauxite deposits on mainland Australia and elsewhere – mainly within the tropical equatorial belt. There are 11 small deposits at Campbell Town currently under development which cover a total area of around 2kms by ~80m (ave) and from 2 to about 5 m depth.
- Australian Bauxite are undertaking a simple top soil (if any) removal – strip the bauxite layer – then replace top soil as they go operation.

These deposit type characteristics are what has attracted Kingfisher to apply for an Exploration Licence to explore for Bauxite in the area. We are particularly pleased that the deposits are not likely to be located on productive land as they are nutrient poor soils located on the plateaus of hills. The very thin near surface geometry of the deposits sought will result in minimal environmental disturbance. Modification of the landscape will also be minimal and no impact will be made on land use one mining operations finish (other than the few metres drop in topography). It is very unlikely that ground water will be encountered. Australian Bauxite Limited's operation in Campbell Town does not use water in processing the material.

Due to these unique, very low impact mineral deposit characteristics, I feel like this could present a value add to land holders businesses if one of more of these small deposits are found to be located on their land holding.

Land Holder Contact Details

As mentioned, I had a meeting with some landholders from around 16 Properties within EL9/2015 a few weeks ago and provided the attached presentation to them. I received the contact details of all who attended. We need the contact details to continue communicating with each other and so I can inform people of, and ask permission for land access if we are wanting to be walking on their land. I would like the opportunity to explain what it is exactly we will be doing and when, listen to and gauge input from land holders and keep everyone fully informed. I am determined to hold these discussions with land owners in an open, transparent and two way manner. As I mentioned at the meeting, if people hold strongly negative views about this, I would still like the opportunity to discuss things with them. If it is the case that after these discussions, the land owner would prefer not to allow their land to be involved, I am happy to delete that property out of the Exploration Licence Area. I certainly respect the culture and lifestyles of farming communities and in no way intend to upset anybody.

It would be really appreciated if you could email me at kent@kingfisherexploration.com with your properties address and contact details so we can get in touch. Alternatively, please give me a call any time on 0457 162 096 if you would like any additional information.

What happens next ?

As I have already gained support and access to visit some properties in the area, I am busy doing the research required to formulate an initial field work program. This detailed application to work requires, amongst other things, identification of rare or threatened species, listing any historic or archaeological sites, description of soil types and land uses and any mitigation measures we will undertake to ensure there are no impacts resulting from the proposed works. The initial proposal of ground work will have no visible land disturbance impacts. This will only include mapping and sampling (<5kg rock samples) with the possible addition of "auger" drilling. The proposed program then has to be submitted to Mineral Resources Tasmania who will either adjust the program to meet regulation or grant its approval. In my opinion, affected landholders should also be informed of this detail so as part of my field work application, I will be informing the relevant land holders and discussing everything with them.

It is difficult to accurately inform you of when field activities will commence but we are hopeful of starting our programs as soon as we can. Likely within 2 months but as stated, as land holders, you will certainly be informed and consulted prior to any field work taking place, no matter how minimal.

Additional Information

Please contact me at any time if you would like additional information. You can also source information from the Mineral Resources Tasmania web site <http://www.mrt.tas.gov.au/portal/home> in the top left under the Tasmanian Government logo there is a link called "community". Some of the most useful information can be obtained from FAQ link.

There is also additional information within the presentation I gave which I have asked the Council to attach to this note for your information.

I look forward to hearing from you,

Thank you and with best regards,

Kent Wighton

Director

Kingfisher Exploration Pty Ltd

Email: kent@kingfisherexploration.com

Phone (mob): 0457 162 096

KINGFISHER

EXPLORATION PTY LTD

ACN: 169 842 728

**INFORMATION FOR LAND
OWNERS WITHIN
EXPLORATION LICENCE
EL9/2015**

Kent Wighton
Director
Thursday 17th September
Ouse Golf Club

This talk will

- Introduce landowners within EL9/2015 to Kingfisher Exploration
- Explain Kingfisher Exploration's Core Business Philosophies
- Briefly discuss Bauxite Deposits in Tasmania
- Talk about what it means that Kingfisher has been granted the Right to explore the area within EL9/2015 for bauxite.
- Discuss what we are looking for and what activities we plan to do.
What are the next steps for Kingfisher in the Ouse / Hamilton area ?
- Contact Mineral Resources Tasmania for additional information
- Contact me any time.
- Questions....



About Kingfisher Exploration

Kingfisher Exploration is a small privately held, Australian mineral exploration company.

The company has three Directors. Kent Wighton and Sean Westbrook are experienced geologists who both studied at the University of Tasmania and have worked within Tasmania, through out other parts of Australia and Internationally. Fred Bain has extensive mineral industry experience and is the General Manager of Kingfisher.

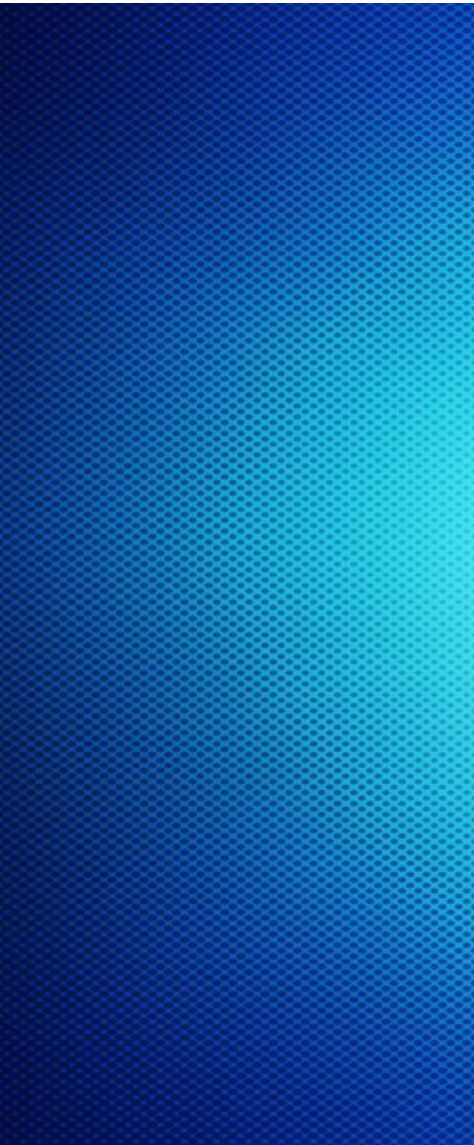
We aim to identify small to mid sized projects that have potential to tick all the boxes required for project development.

We currently hold three exploration licences in Tasmania.

EL11/2012 – Gold; NE Tasmania

EL6/2015 – Zinc; West Coast Tasmania

EL9/2015 – Bauxite; Ouse / Hamilton District



Kingfisher view the minerals business through its Core Business Philosophies. These are strongly aligned with four key aspects of all successful operations. Each of these four aspects are viewed with EQUAL importance and given due respect.

**Local Communities
and Government**

- Kingfisher will openly engage with local communities and Government. This will be done with full transparency of information flow.
- Open door policy to land holders - Any Questions at Any Time
- Land owners know of **ALL** activities **BEFORE** they commence
- Compliance with all Government Legislation

Environment

- Kingfisher will go above and beyond to ensure environmental best practice is employed on all of its projects. Bauxite exploration of this nature has very low to no ground disturbance impacts. All activities need approval from Government with information and permission sought from land owners.

Technical

- Kingfisher have very experienced technical geologists. Simple low impact systematic approach to exploration.

Economic

- The project may progress from this investigative exploration stage but it is far to early to know or give any approximations.

Bauxite Deposits in Tasmania

Differ significantly to most deposits on the main land, (NSW & QLD).

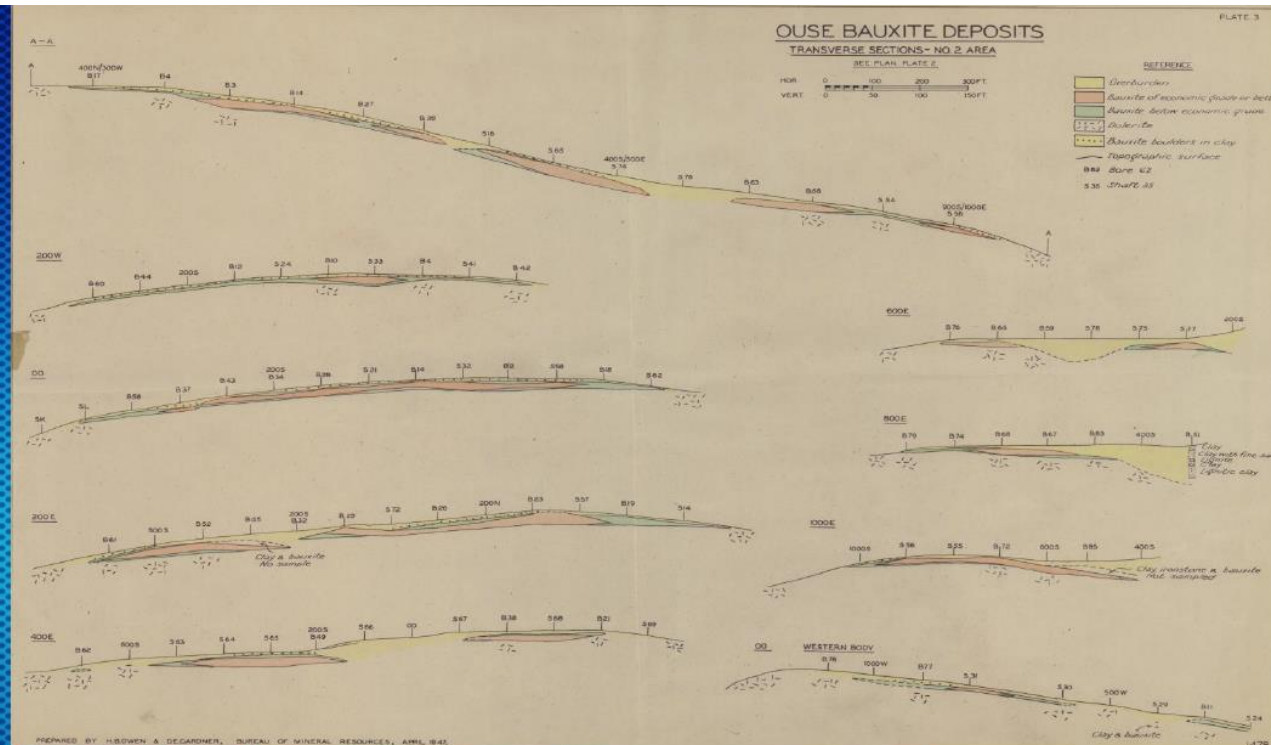
Mainland deposits are mostly sediment hosted and HUGE – 100's millions of tonnes. They are generally lower grades and slightly different mineralogy which is important !

Bauxite in Tasmania is a product of weathering of the Dolerite or Basalt. Deposits are thin and located on the very near surface. It can be higher grades and of a select and in demand mineralogy (Gibbsite).

The only known Tasmanian deposit is Australian Bauxite Limited's operation at Campbell Town and is 3.5Mt. This deposit shares similar characteristics with what previous investigations found around Ouse in the 1940's.

Bauxite from Tasmania is a premium product filling a niche market. The mineralogical characteristics of Gibbsitic Bauxite enable the material to be converted to Alumina at much lower temperatures within the smelting process. This means greatly reduced energy costs in a very very electricity intensive process.

Kingfisher foresee strong demand for this material, even though the deposit sizes are generally very small.



All historic bauxite occurrences in the Ouse District were discovered in the late 1940's. All are thin on or near surface occurrences. The deepest bauxite occurrence in the area is around 6m from surface.

Section map of Bauxite mineral occurrence, Gladstone Estate, near Ouse, 1947.
(note – not within EL9/2015)



Picture courtesy of Australian Bauxite Limited. Surficial bauxite mining at Campbell Town, Tasmania, 2015.

Mining consists of removal and stockpile of topsoil, mining the few meters of bauxite then replacing the soil horizon as they go.

EL9/2015

Kingfisher Exploration has applied for and has been granted by the Tasmanian Government, a **Right to Explore for Bauxite** within a defined area known as Exploration Licence EL9/2015.

This **only** gives Kingfisher the right to explore for the minerals, **not** to develop mining operations.

Exploration can be relatively quickly with very low to no impact on the environment due to the bauxite ore being so close to surface.

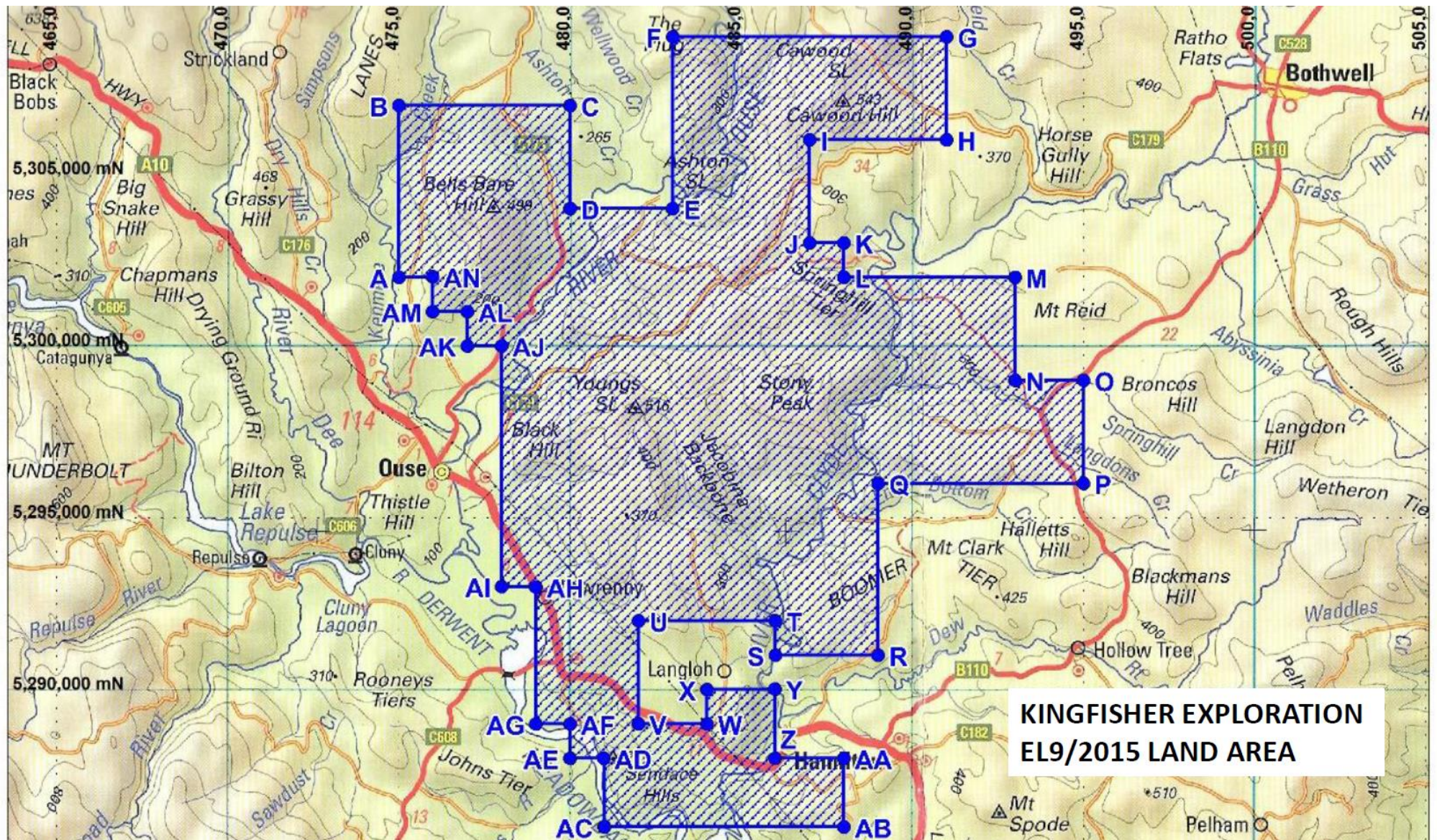
This is a very early stage project. We first assess and explore the possibilities. If we find a concentration of bauxite, we then study it and assess what that means....

There are very detailed technical studies to undergo to do with the environment and social impacts, governmental compliance, deposit geometry, metallurgy, and logistics, economic situation etc. We are a very long way from that at the moment.

For now, Kingfisher has done some research and has an idea to look into.

What we currently know is based only on reports of mineral occurrences from the 1940's.

A bauxite resource was suggested from wide spaced pits and shaft investigation in the early 1940's. **The area identified is not within EL9/2015.** Another group have applied for an Exploration Licence covering that area (slightly NW of Ouse township).



GPS Border Coordinates of EL9/2015

<i>POINT ID</i>	<i>EASTING</i>	<i>NORTHING</i>	<i>POINT ID</i>	<i>EASTING</i>	<i>NORTHING</i>
A	475000	5302000	V	482000	5289000
B	475000	5307000	W	484000	5289000
C	480000	5307000	X	484000	5290000
D	480000	5304000	Y	486000	5290000
E	483000	5304000	Z	486000	5288000
F	483000	5309000	AA	488000	5288000
G	491000	5309000	AB	488000	5286000
H	491000	5306000	AC	481000	5286000
I	487000	5306000	AD	481000	5288000
J	487000	5303000	AE	480000	5288000
K	488000	5303000	AF	480000	5289000
L	488000	5302000	AG	479000	5289000
M	493000	5302000	AH	479000	5293000
N	493000	5299000	AI	478000	5293000
O	495000	5299000	AJ	478000	5300000
P	495000	5296000	AK	477000	5300000
Q	489000	5296000	AL	477000	5301000
R	489000	5291000	AM	476000	5301000
S	486000	5291000	AN	476000	5302000
T	486000	5292000			
U	482000	5292000			

GPS Coordinate point data defining the EL application area as shown in the map. Datum used is Map Grid of Australia 1994 (MGA94) Zone 55, GDA94.

Early stage activities within EL9/2015

- We are looking for small areas where the weathering processes have concentrated Bauxite in specific locations. EL9/2015 is 248 sq Km and based on previous data and research, we are looking for deposits with thin geometries that have a surface foot print of 10's to a few 100m across.
- The first activities will involve **mapping** the entire area to define the large areas where Bauxite is not located.
- Where we find areas of interest we may take **“grab samples”**. These are around 5kg samples. We identify the GPS location and characteristics of the sample material for analysis.
- First stage assessment activities may also include shallow (~5m), wide spaced **auger test holes**. The auger employed will be of 62mm diameter.

ALL exploration activities will be discussed with land owners at least two weeks prior to field work.

ALL work programs must first have gone through the Mineral Resources Tasmania approvals process.



Kingfisher recognise that in general local communities will have concerns over and expect to:

- Preserve culture, lifestyle and values of traditional occupations.
- To be kept fully informed and kept up to date with current and potential future activities.
- Be assured that everything possible is done to minimise and adequately remediate any potential environmental impacts.
- Project development must benefit land owners and local community and not negatively impact on either.
- For a company to operate in a friendly, understanding and completely transparent manner.
- Have their voices properly listened to, respected, discussed and worked with.

Kingfisher believe one needs to show respect to gain it and actions supersede words !

Additional information can be obtained from Mineral Resources Tasmania web site <http://www.mrt.tas.gov.au/portal/home>

One of the best places for information is under “Community” and “FAQ” frequently asked questions tab.

For further reading if interested, reports specific to the Ouse area from the 1940’s can be accessed from Mineral Resources Tasmania web site also.

Select “Products and Services” In the middle row of the drop down menu select the top item “ Documents Search”. Type in Ouse in Geographic Location. Select “more search options” by clicking “show” on the right. In “Minerals” select Bauxite then click bottom right “search”.

Key references are

Title	Author	Year	MRT Reference
Bauxite at Ouse	Dickenson, D.R.	1941	UR1891_1969_153_167 - Bauxite at Ouse
Bauxite at Ouse and Campbell Town	Dickenson, D.R.	1942	UR1891_1969_180_192 - Bauxite at Ouse and Campbell Town
Bauxite in Tasmania	Dickenson, D.R.	1943	URMISCB_110_141 - Bauxite in Tasmania

KINGFISHER

EXPLORATION PTY LTD

ACN: 169 842 728

Kent Wighton

Director

Kingfisher Exploration Pty Ltd

Email:

kent@kingfisherexploration.com

Phone: 0457162096



THANK YOU

Please feel free to ask any questions.....

15.0 WORKS & SERVICES

Moved **Clr**

Seconded **Clr**

THAT the Works & Services Report be received.

15.1 WORKS AND SERVICES REPORT

12th September 2015 – 14th October 2015

Maintenance Grading

Bridge Road	Leesons Road	Cider Gum Drive
Meredith Springs	Fleming Drive	Berry Drive
Mackersey Head Road	Little Black Dog Court	Thiessen Crescent
Meadsfield Road	Robertsons Road	Drysdale Road
Johnstons Road	Ruby Lane	Jones Road
Trout Court	Anglers Court	Haulage Hill
Toomray Drive	Rats Castle Road	Brandum Bay
Middle Brandum Bay	Headlam Road	Currowong Court
Banfield Drive	Reynolds Neck Road	Allport Road
Seals Road	Wetheron Road	

Re-Sheeting

Pine Tier Road	Coopers Road
----------------	--------------

Potholing / shouldering

Interlaken Road	Waddamana Road	Tor Hill Road
Lower Marshes Road	Norley Road	

Culverts / Drainage:

Drainage Meadsfield Road	Drainage Ellendale Road – Prep for Andrew Walter Construction
Arthur Street Hamilton	Clean culverts – Tor Hill & Selma Road

Occupational Health and Safety

Monthly Toolbox Meetings
 Day to day JSA and daily pre start check lists completed
 Monthly work place inspections completed
 Playground inspections
 118.5hrs Long Service Leave taken
 17hrs Sick Leave taken
 0hrs Annual Leave taken

Refuse / recycling sites:

Cover Hamilton Tip twice weekly	Removal of tyres from Bronte WTS
Push up green waste Bothwell WTS	Bulky rubbish run

Other:

Queens Park fence removal & installation	Installation of cricket pitch – Bothwell Football Ground
Metal & emulsion – potholes Lower Marshes	Install new border for softfall – Wayatinah Park
Install softfall – Wayatinah Park	Install slide – Wayatinah Park
Tree removal – Ouse	Continue works – Derwent Bridge Amenities
Install new seat – Bothwell Cemetery	Oil tables – Mt Adelaide
Oil rubbish bins – Bothwell Township	Install rubbish bin – Hamilton Park
Install plaque – Cemetery	Dig 1 x grave
Install sign – Allison's Road	Repair signs – Hollow Tree Road
Remove dangerous trees from fire – Victoria Valley, Lanes Tier & Wellwood Roads	

Municipal Town Maintenance:

Collection of town rubbish twice weekly
 Maintenance of parks, cemetery, recreation ground and Caravan Park.
 Cleaning of public toilets, gutters, drains and footpaths.
 Collection of rubbish twice weekly
 Cleaning of toilets and public facilities
 General maintenance
 Mowing of towns and parks
 Town Drainage

Plant:

PM682 Float tyres	PM755 Triton serviced & 2 new tyres
PM676 Kobelco Excavator hose repair	PM666 Cat Loader hose repair
PM602 Mitsubishi Grader serviced	PM684 Komatsu Grader new tyres
PM693 John Deere mower serviced	PM751 Toro mower new gearbox
PM703 New Holland Mower serviced	
PM741 Service Mack (H) and repairs to power steering locks	

Private Works:

Water Industry Solutions – Gravel	Jeff Purdy – Concrete Mix
Bothwell School – Gravel Delivery	Casey Bryant – Gravel & Concrete Mix
John Marshall – Concrete Mix	Garrie Eyles – Truck & Backhoe Hire
Bassit Building – Gravel Deliveries	Wayne Manion Plumbing – Gravel Deliveries
Dean Laide – Gravel Deliveries	Tony Bailey – Spraying of weeds
Dave Jones – Gravel Delivery & Grader Hire	Jason Branch – Mower Hire
Scott Shearing – Mower Hire	Geoff Herbert Snr – Concrete Mix
John Hall – Truck Hire	Cornwall Coal – Gravel Delivery
SFM Forest Products – Grading	Barry Harback – Backhoe Hire
Elvin Gleeson – Concrete Mix	

Casuals

Toilets, rubbish and Hobart	Bothwell general duties
Hamilton general duties	Mowing and brush cutting

Program for next 4 weeks

Kerb replacement – Elizabeth Street Bothwell	Bridge deck replacement – Gowan Brae Bridge
Start plant replacement process	Stabilisation works – Ellendale Road
Culvert replacement and drainage works for stabilization works in Ouse Town Streets	

15.2 OLD TIME KEEPERS BOX BOTHWELL RECREATION GROUND

The original old time keeper's box at the Bothwell Football Ground is no longer used at the venue for any activities, a new time keepers box was built on the grand stand some years ago. Power has been disconnected some time ago. The building has a severe crack in the brick work and presents a danger to the public using the venue if the building was to collapse.

Recommendation:Moved **Clr**Seconded **Clr**

THAT Council remove the old time keeper's box at the Bothwell Recreation Ground.





15.3 STATUS REPORT

- **328 - 20/4/2012**

Gorse at Christian Marsh, Responsible Officer: NRM

This item was asked to be placed on the Status Report at the March 2012 Meeting.

- **329 - 18/8/2012**

Platypus Walk, Responsible Officer: Works Manager

Regular Maintenance

- **332 - 17/9/2013**

Blackberry Removal, Responsible Officer: Works Manager / NRM

Clr Bowden requested that this item be placed on the Status Report

16.0 ADMINISTRATION

16.1 DISCUSSION PAPER – CONTINUOUS IMPROVEMENT FRAMEWORK (SEPARATE ATTACHMENT)

The Continuous Improvement Framework (CIF) is an initiative of the Premier's Local Government Council (PLGC) and is designed to help councils deliver the best possible outcomes to Tasmanian communities.

Framework Overview

Part 1 of the proposed three-part framework is an overview. The overview of the project would:

- articulate the purpose and objectives of the CIF;
- provide an overview of each of the parts of the framework and how they link together; and
- offer guidance on how the framework is intended to be implemented.

Proposed Framework - A THREE-PART FRAMEWORK

The Advisory Committee has developed a draft framework for continuous improvement. Its aim is to support councils by providing performance information along with tools that are designed to address identified performance gaps to assist councils in their efforts to improve performance.

A brief summary of the three parts of the framework is:

1. A framework overview – to articulate the purpose of the framework, provide a summary, and offer guidance on how it might be used by councils.
2. A performance reporting system – to help councils understand their current performance, where they are performing well and where there is scope to enhance performance.
3. Tools and resources developed in line with performance reports to support councils to improve their performance including:
 - a. Case studies – to share proven practices and processes.
 - b. Information, tools and templates, education and training – to address identified areas requiring improvement.
 - c. Self-assessment tools – to promote ongoing self-assessment and continuous improvement.

The proposed three-part CIF will assist councils with identifying performance gaps and implementing improvements. The performance assessment report will help councils to understand how their organisation is performing in relative terms while self-assessment tools and information, templates, education and training can be incorporated into councils' improvement plans.

LGAT is seeking feedback by COB Friday 23 October 2015.

For Discussion

16.2 LGAT PLANNING WORKSHOP (SEPARATE ATTACHMENT)

LGAT will be running a Planning Workshop on Saturday, 28 November 2015 at the Tramsheds in Launceston. The full day course will cost \$495 and will expand upon the induction style offerings made through LG 101 and Elected Member Weekend Workshops. The course content was developed in partnership with the University of Tasmania and will be delivered by Irene Duckett.

For Information

16.3 DRAFT STATEWIDE MEMORANDUM OF UNDERSTANDING BETWEEN THE STATE GOVERNMENT AND LGAT ON BEHALF OF COUNCILS (SEPARATE ATTACHMENT)

The Memorandum of Understanding has been developed as a result of recommendations to come out of the Role of Local Government Strategic Action Plan. The purpose of this MOU is to outline the common intent of each party and clearly delineate the roles and responsibilities of the State Government with regard to key regulatory requirements of local government in Tasmania.

The MOU will provide for:

- Clear role delineation, guidance and assistance to councils in undertaking their roles;
- A dedicated and ongoing forum for strategic consultation with councils and stakeholders; and;
- Joint development of tools and systematic review.

Comments are due back to LGAT by COB Friday, 23 October, 2015.

For Discussion

16.4 COMMUNITY GRANT APPLICATION – BOTHWELL LIONS CLUB

A Community Grant Application has been received from the Bothwell Lions Club for \$200 for the Lions Christmas Lights and Barbecue. The project objective is to give the residents of Bothwell the opportunity to participate in Christmas Carols and a barbecue and participate in the Christmas lights competition. The estimated total cost is \$250.

For Decision



CENTRAL HIGHLANDS COUNCIL COMMUNITY GRANTS PROGRAM APPLICATION FORM

Please ensure you have read and understand the Program Guidelines prior to completing this form.

1. APPLICATION & ORGANISATION DETAILS

Name of Project: *Lions XMAS Lights and barbecue*

Amount of Grant Requested: *\$200*

Estimated Total Project Cost: *\$250*

Applicant Organisation: *BOTHWELL & DISTRICTS Lions Club.*

Contact Person's Name: *Tony Johnston.*

Contact Details
Address: *62595662*

Phone: (Business hours)

Mobile: *0447687831*

Fax:

Email:

Signature *A.J. Johnston*

Name

Position in Organisation *Co Ordinator.*

Date

What is the overall aim/purpose of the applying organisation?

To give residents a xmas light competition and

What is the membership of the organisation? *CHRISTMAS CAROLS & Barbecue.*

President *Keith ALcock*

Secretary *JUNE PITCHER.*

Treasurer *MALCOM Scott.*

Public Officer/s

2. ELIGIBILITY (see Community Grant Program Guidelines)

Is the organisation:

- ☒ Representative of the interests of the Central Highlands Community
- ☒ Incorporated
- ☒ Not for Profit
- ☐ Unincorporated
- ☐ A Hall Committee

OR

- ☐ An individual community member

Have you previously received funding from the Central Highlands Council? (Please attached additional pages if required)

If yes;

Name of Project: XMAS Lights + CAROLS .

Date Grant received: 2 years ago

Amount of Grant: \$250 I think.

3. PROJECT DETAILS

Project Start Date: During December.

Project Completion Date: 30/12/15

Project Objectives:

To give the residents of Bothwell
and CHRISTMAS CAROLS + Barbecue
and participate in xmas lights competition

4. COMMUNITY SUPPORT

What level of community support is there for this project?

we usaly have about 80 attend

Does the project involve the community in the delivery of the project?

How will the project benefit the community or provide a community resource?

5. COUNCIL SUPPORT

Are you requesting other Council support? E.g. parks, halls, telephones, fax, photocopying, computers, office accommodation, cleaning facilities, street closure.

If yes, please give details.

usually held in Queens Park.

Are you requesting participation by Councillors or Council Staff? ,
If yes, please give details.

Council to help supply chairs and power.

If your application is successful, how do you plan to acknowledge Council's contribution?

*It will get verbal thanks
on the evening of Christmas CAROLS.*

Father Xmas will be in attendance and say

6. FUTURE APPLICATIONS AND THE SUCCESS THIS PROJECT

Do you anticipate the organisation will apply for funding in future years?

Yes.

Something also.

How will you monitor/evaluate the success of this project?

7. PROJECT BUDGET

Note: Amount from Council must not exceed half the project cost

Please provide a breakdown of the project expenditure and income:

Expenditure	Amount \$	Income	Amount \$
Capital		Guarantee	
Refurbishment		Government Grants	
Equipment		Trust/Foundations	
Premises		Donations from Business	
Vehicles		Special Funding	
Other:		Gifts in Kind	
Other:		Other:	
Subtotal		Other	
		Subtotal	
Revenue		Anticipated	
Salaries (including super)		Government Grants	
Short-term contract fees		Central Highlands Grant	
Running costs		Trust/Foundations	
Production of information PR materials		Donations from Businesses	
Training staff/volunteers		Special Fundraising	
Travel		Gifts in kind (details)	
Rent		Cash Reserves	
Reference materials		Other:	
Other:			
Subtotal		Subtotal	
TOTAL		TOTAL	

16.5 REMISSIONS UNDER DELEGATION

The following remissions were made by the General Manager under Delegation:

01-0809-02029	\$110.11	Remit penalty - ownership from LIST not done
01-0838-02982	\$138.00	Waste service provided by DVC
01-0823-02331	\$21.29	Remit penalty – property sold

For Noting

16.6 CHINESE CULTURAL AWARENESS WORKSHOP

The Co-ordinator General's Office in partnership with LGAT, RDA Tasmania and the three regional authorities have secured training on Chinese Language and Cultural Awareness.

The training will be held at the Silverdome on Thursday 12 November, 2015 and councils may send one representative each.

For Discussion

Invitation



Chinese Cultural Awareness Workshop

John Perry, Coordinator-General, on behalf of the Office of the Coordinator-General and supporting partners, invites one representative from your council to either one of two Chinese Cultural Awareness Workshops.

These workshops will cover topics such as building rapport, cross-cultural communication, conflict avoidance, effective communication, social etiquette and tips on presenting to a Chinese audience.

When Workshop 1: Friday, 9 October 2015
Workshop 2: Thursday, 12 November 2015
9:15 am – 5:00 pm
Lunch will be provided

Where Silverdome, 55 Oakden Rd, Prospect

RSVP Please indicate preferred date by
5 October 2015 (maximum 20 places at each workshop)

Ms Leah Carr
Phone: 03 6777 2786 or
Email: leah.carr@cg.tas.gov.au



NORTHERN
TASMANIA
DEVELOPMENT



LGAT
Local Government Association of Tasmania

Regional
Development

CRADLE COAST

Lyn Eyles

From: Katrena Stephenson <katrena.stephenson@lgat.tas.gov.au>
Sent: Friday, 25 September 2015 4:55 PM
To: Break O'Day Council (E-mail); Brighton Council ; Burnie Council (E-mail); Central Coast Council; Lyn Eyles; Circular Head; Circular Head EA; Clarence City Council (E-mail); Derwent Valley Council (E-mail); Devonport Council (E-mail); Dorset Council (E-mail); Flinders Council; George Town Council (E-mail); Glamorgan Spring Bay Council (Email); Glenorchy City Council; Hobart City Council; Huon Valley Council; Kentish Council; King Island Council; Kingborough Council; Latrobe Council (E-mail); Launceston City Council (Email); Meander Valley Council; Northern Midlands Council; Sorell Council; Southern Midlands Council (E-mail); Tasman Council (E-mail); Waratah/Wynyard Council (E-mail); West Coast Council (E-mail); West Tamar Council
Cc: Georgia Palmer; Michelle Freeman; Craig Perkins; Brenton West; Brett Smith; Derek LeMarchant; Mayor Doug Chipman; Jessie.Stanley@cg.tas.gov.au
Subject: FW: Chinese Language and Cultural Advice training day
Attachments: Chinese Cultural Awareness Workshop invite for Council FINAL.pdf

Dear All

The Coordinator General's office in partnership with LGAT, RDA Tasmania and the three regional authorities has secured training days on Chinese Language and Cultural Awareness.

This is in recognition of the growing interest in attending and hosting trade delegations.

There are two training days, Friday 9th October and Thursday 12 November both at the Silverdome in Prospect.

Places are limited to one person per council at this time.

Please consider who would get the most benefit, and be most able to provide advice and information back to Council.

Details on how to RSVP are in the attached flyer – please note LGAT is not processing RSVPs.

Regards

Katrena

Dr Katrena Stephenson
CHIEF EXECUTIVE OFFICER
 Local Government Association of Tasmania
 GPO Box 1521
 Hobart, Tas, 7001
 Phone: 6233 5973 or 0408 610041

16.7 DRAFT ANNUAL REPORT

Central Highlands Council Draft Annual Report 2014-2015 has been prepared and is submitted for adoption prior to Council's Annual General Meeting in December.

Recommendation:

Moved **Clr**

Seconded **Clr**

THAT Council adopt the Annual General Report 2014-2015.

16.8 BOTHWELL FOOTBALL CLUB ROOMS

A grant application has been submitted to the Tasmanian Community Fund. The Bothwell Football Club has been advised that Council resolved to contribute \$25,000 towards the fitting out of the club rooms subject to:

1. The grant application to the Tasmanian Community Fund for \$50,000 being successful;
2. Evidence of contributions from the Bothwell Football Club, local groups and Eric Hutchinson;
3. Confirmation of quotes received for all works;
4. Confirmation that all works will be completed within the budget provided.

For Information

16.9 ELLENDALE FIRE STATION – LEASE RENEWAL

The land lease between Central Highlands Council and the State Fire Commission upon which the Ellendale Fire Station is sited expired on 1 June 2015.

The State Fire Commission is seeking a renewal for a further 25 years.

Recommendation:

Moved **Clr**

Seconded **Clr**

THAT the General Manager sign and seal the Lease Agreement with the State Fire Commission for a term of 25 years from 1 June 2015 for the land on which the Ellendale Fire Shed is sited.



STATE FIRE COMMISSION

Cnr Melville and Argyle Streets, HOBART TAS 7000 – GPO Box 1526, HOBART TAS 7001
www.fire.tas.gov.au

File No: 0579/04
Phone: (03) 6230 8660
Facsimile: (03) 6231 0785
Email: c.parker@fire.tas.gov.au

Lyne Eyles
General Manager
Central Highlands Council
6 Tarleton Street
HAMILTON TAS 7140

Dear Lyne

ELLENDALE FIRE STATION – LEASE RENEWAL

The land lease between Central Highlands Council and the Commission upon which the Ellendale Fire Station is sited expired 1 June 2015.

The Commission are seeking approval from you for a renewal of the lease for a further twenty five years. To avoid unnecessary paperwork, I have attached a lease agreement in duplicate.

Please peruse the contents and if you concur with the conditions contained therein please sign both documents and return them to me. I will then have the Chief Officer sign both copies and return one copy to you for your records.

Please contact me if you have any concerns.

Yours sincerely

C Parker
Executive Officer, Assets

1 October 2015

AN AGREEMENT made this Twenty Fifth day of September, Two Thousand and Fifteen between the Central Highlands Council (hereinafter called "The Lessor") on the one part and the State Fire Commission (hereinafter called "The Lessee") on the other part whereas the Lessor has agreed to lease to the Lessee the land hereinafter described upon the terms and conditions hereinafter appearing.

NOW THIS AGREEMENT WITNESSETH AS FOLLOWS:

1. **The Lessor** demises to the Lessee who hereby takes on the lease all that land described in the Schedule hereto (hereinafter called "the said land") to have and to hold the same for a term of Twenty Five years from the First day of June 2015 yielding and paying therefore unto the Lessor the annual rental of \$1.00 (if demanded).
2. **The Lessee** hereby covenants with the Lessor as follows:
 - (a) To pay the rental at the time and in the manner aforesaid;
 - (b) To pay all rates and taxes levied on the said land;
 - (c) To pay all costs of power supplied to the said land and telephone;
 - (d) To use the land for fire station purposes;
 - (e) Not to erect any additional building or structures or to alter any improvements existing at the date of this agreement without having obtained the prior written approval of the Lessor;
 - (f) To maintain the said land in a neat and tidy condition free from weeds, vermin and fire hazard;
 - (g) Not to assign, underlet or part with possession of the said land or any part thereof without the written consent of the Lessor;
 - (h) Not to do or permit to be done upon the said land anything which in the opinion of the Lessor may be or become a nuisance, danger or annoyance to adjacent lands or the neighbourhood or a breach of any statute or municipal by-law or regulation;
 - (i) To permit the Lessor or his agents to enter upon the said land at all reasonable times to inspect the condition thereof;

- (j) To comply with the provisions of all Acts and Regulations thereunder applicable to the use of the said land by the Lessee during the term of the lease.
3. **The Lessor** covenants with the Lessee that the Lessee paying the said rent and observing, conforming and complying with the terms of the lease may peaceably hold and enjoy the said land during the term hereby created without interruption from the Lessor or any person lawfully claiming under him.
4. **It is hereby expressly agreed between the parties hereto:** That the Lessee shall be responsible for any damage whatsoever and howsoever and to whomsoever caused and for all claims, costs, actions and demands in respect of the injury to or death of any person or loss of or damage to any property arising out of or in connection with use of the said land by the Lessee during the term of the lease or any extension thereof and shall indemnify and keep indemnified the Lessor against all such damages, claims, costs, actions and demands aforesaid.
5. In regard to clause 4 the Lessee shall not be held accountable or liable for any action taken by the Lessor or any other party where it can be demonstrated that the Lessor or a third party acted under their own authority and independent of the Lessee.

THE SCHEDULE HEREINBEFORE REFERRED TO

The land as indicated on the attached Plans.

IN WITNESS whereof the parties hereto have set their hands and seals the day and the year first above written.

Signed on behalf of the Central)
Highlands Council in the presence)
of:)

Signed and sealed by the Chief)
Officer of the State Fire Commission)
in the presence of:)

MAY 14 '90 14:02

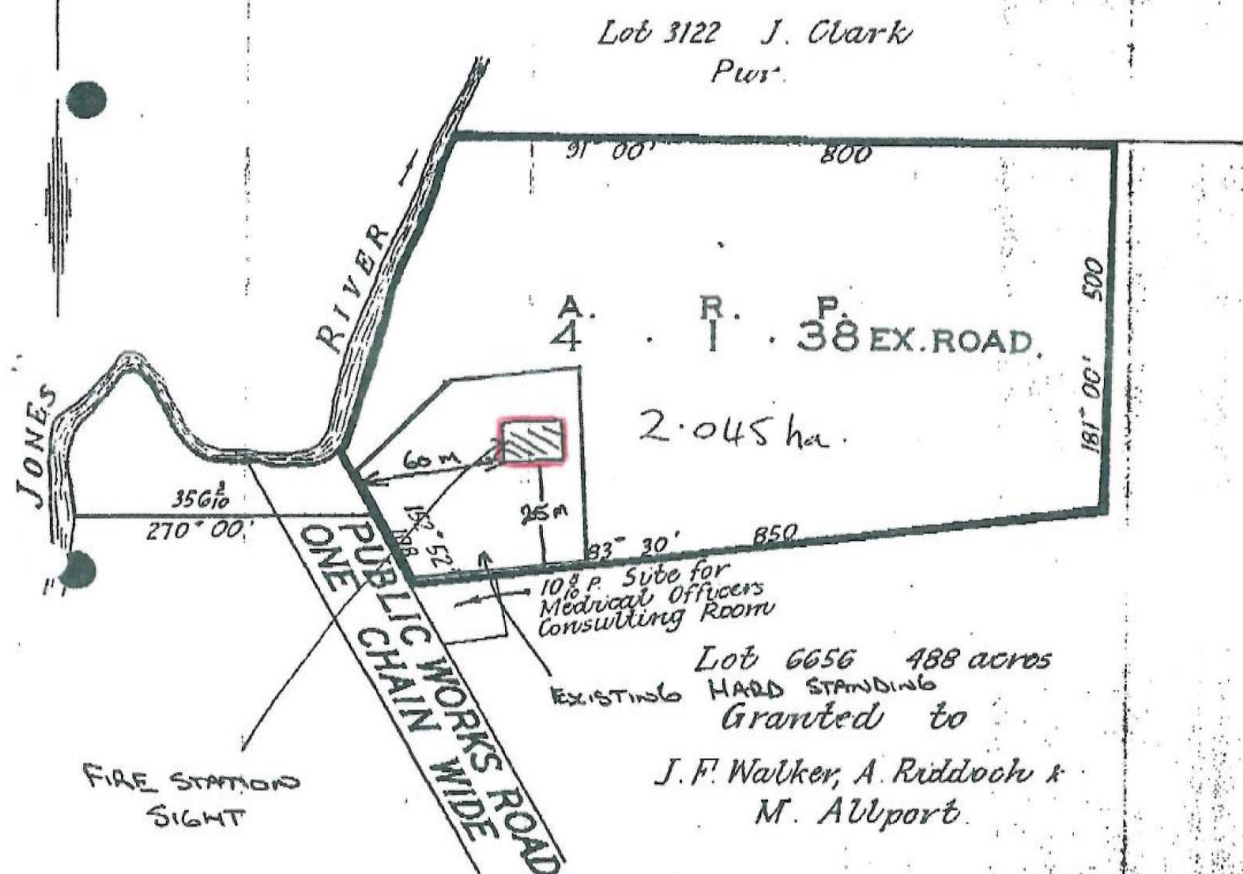
SFC MIDLANDS DIST

677 P02/02

57

SIGHT OF THE PROPOSED
ELLENDALE FIRE STATION

LAND DISTRICT OF BUCKINGHAM
PARISH OF ARGYLE
SCALE 2 CHAINS TO AN INCH



computed from survey
J. J. Thompson & J. K.
Frodsham (F).

16.10 HAMILTON SHOW COMMITTEE

The Hamilton Show Committee is seeking permission for a Clay Target Shooting Stand at the 2016 Hamilton Show.

Council gave permission for the Hamilton Show Committee to have the stand for the 2015 show subject to the following conditions:

- The Show Committee having all relevant insurances;
- The Committee considers buffer zones for animals; and
- The Committee complies with all relevant legal requirements

Recommendation:

Moved **Clr**

Seconded **Clr**

THAT permission be granted for the Hamilton Show Committee to hold a clay target stand at the 2016 Hamilton Show subject to the same conditions as 2015.

16.11 SUB-REGION DEVELOPMENT & MARKETING STRATEGY

Southern Midlands and Brighton General managers have met to discuss the development of a strategy for our sub-region (Central Highlands, Derwent Valley, Southern Midlands and Brighton Councils) to work jointly to promote and market economic and community development.

They propose that our Councils undertake a value management workshop to further develop this initiative and prepare a strategy to take us forward.

The overall objective is to firstly determine how the four councils can work together to develop and promote our sub-region, to identify short, medium and long term opportunities, agree on priorities and prepare an action plan for implementation. The development of a marketing and communication strategy would flow from this.

The Tasmanian firm, Global Management has considerable experience in this area and it is proposed that they be engaged to assist in this task. The estimated cost of preparation and conduct of the workshop plus the development of a report is estimated at no more than \$8,000.

Recommendation:

Moved **Clr**

Seconded **Clr**

THAT Council agree to contribute towards the undertaking of a Value Management Workshop and the following attend the workshop on 9 November, 2015:

Mayor, Deputy Mayor, General Manager & David Doyle

Lyn Eyles

From: Sanderson, Ron <Ron.Sanderson@brighton.tas.gov.au>
Sent: Wednesday, 30 September 2015 10:18 AM
To: Tony Bisdee (tonybisdee@bigpond.com); Martyn Evans (nndrycleaners@bigpond.com.au); Deirdre Flint; Foster, Tony (Mayor) tkirkwood@southernmidlands.tas.gov.au; 'gwinton@dvc.tas.gov.au'; Lyn Eyles
Subject: Sub-Region Development and Marketing Strategy

Hello All

As requested, Tim and I have met to discuss the development of a strategy for our sub-region (Central Highlands, Derwent Valley, Southern Midlands and Brighton Municipalities) to work jointly to promote and market economic and community development.

We believe that our sub-region has much to offer, particularly in the areas of tourism, agriculture, recreation and industry development. However, there are a number of other areas, such as transport and roads, education, energy and health services, where we can achieve significantly more through working collectively, rather than as individual Councils. Our current resource sharing initiative provides clear evidence of the potential benefits.

While we agree that an initial step is to undertake an audit of the assets contained in our respective municipalities (e.g. vineyards, accommodation facilities, industrial parks, inland fishing resources, recreation amenities etc), a workshop involving our four Councils, will assist in drawing together the information and Ideas and importantly identify what we need to do to implement a cohesive and enduring plan.

To this end, we propose that our Councils undertake a value management workshop to further develop this initiative and prepare a strategy to take us forward.

It is suggested that each Council provides five representatives for the workshop, ideally including the Mayor, Deputy Mayor, General Manager and two others involved in economic or community development and marketing.

The overall objective is to firstly, determine how the four Councils can work together to develop and promote our sub-region, to identify short, medium and long-term opportunities, agree on priorities and prepare an action plan for implementation. The development of a marketing and communication strategy would flow from this.

The Tasmanian firm, Global Value Management has considerable experience in this area and has worked extensively with local government. We propose that they be engaged to assist in this task. The estimated cost of preparation and conduct of the workshop plus the development of a report is estimated at no more than \$8000.

Time is of the essence. The sooner we commence, the sooner we can achieve positive outcomes that can benefit our region, our municipalities and communities. The suggested dates for the workshop are 9th or 13th November.

Please do not hesitate to contact the writers should you require any further information at this time. We look forward to your response.

Kind regards,

Ron Sanderson

Tim Kirkwood

RON SANDERSON
GENERAL MANAGER

16.12 POLICY REVIEWS (SEPARATE ATTACHMENTS)

The following policies have been reviewed and are submitted for adoption by Council:

Policy No 2013-13	Rates & Charges Policy
Policy No 2013.07	Council Camping Ground Facilities Policy
Policy No 2013-03	Fraud Control Policy
Policy No 2015-41	Risk Management Policy & Strategy (replaces Policy No 2013-01)

Recommendation:

Moved **Clr**

Seconded **Clr**

THAT Council adopt the following policies:

Policy No 2013-13	Rates & Charges Policy
Policy No 2013.07	Council Camping Ground Facilities Policy
Policy No 2013-03	Fraud Control Policy
Policy No 2015-41	Risk Management Policy & Strategy (replaces Policy No 2013-01)

16.13 EXERCISE CLASSES BOTHWELL

Two free exercise classes were held by Janene Glover at Bothwell with 19 participants in the first class and 14 in the second class, all female aged between 18 - 60. After consultation with the group it has been decided that she will continue to deliver classes on a Wednesday unless numbers fall below 8 participants. Cost will be \$10 per person.

Janene is operating as a contractor on behalf of Freedom Health & Wellness which is owned by Stacey Aldous. Stacey had made a commitment that between now and the end of the year any money made over and above her fee to deliver the class will be invested into equipment that Janene can store at her home to access for the Bothwell classes. At present to access equipment Janene needs to travel to New Norfolk prior to the class to collect it and have to back the next morning which is extra travel she would rather not have to do. This equipment remains the property of Freedom Health & Wellness but opens up different options and variety that Janene can offer each week so as participants don't get used to the same exercises and that she can continue to challenge them.

Janene is attending some training at the end of October to be qualified to take a Punchfit classes which is a boxing style class using gloves and pads and the ladies seem keen to try it. Janene thought this style of class might encourage some men to participate in physical activity also and given the links to increased physical activity and improved mental health will see if a partnership can be arranged with RAW or Rural Primary health.

Janene has asked if Council will provide the hall free of charge.

Recommendation:

Moved **Clr**

Seconded **Clr**

THAT Council waive the hall hire fees for exercise classes conducted at the Bothwell Hall by Janene Glover.

16.14 AUSTRALIA DAY

Council has previously agreed that Australia Day functions will be held at Hamilton.

Council need to decide what function they will be having and perhaps set up a sub-committee to organise this.

Council normally present the Tidy Town Awards together with the Australia Day Awards at this function.

For Discussion

16.15 TASMANIAN ROAD STRATEGY 2017-2026

The Road Safety Advisory Committee has commenced development of the new Towards Zero – Tasmanian Road Safety Strategy 2017-2026.

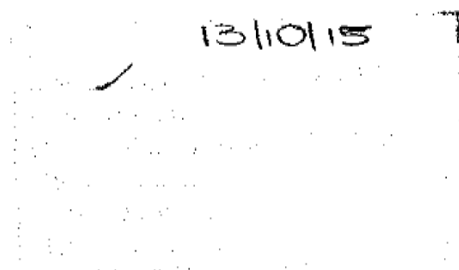
Council has been invited to send representatives to attend a forum for input unto the Towards Zero Strategy.

The forum will be held at Rydges Hotel on Monday 16 November, 2015 from 9-11 am.

For Discussion

ROAD SAFETY ADVISORY COUNCIL TOWARDS ZERO

Ms Lyn Eyles
Central Highlands Council
PO Box 20
HAMILTON TAS 7140



Dear Ms Eyles

Development of the Towards Zero - Tasmanian Road Safety Strategy 2017-2026

Over the 10 year period, from 2005 to 2014, 3,287 people have been killed or seriously injured on Tasmanian roads. This is totally unacceptable.

The current *Tasmanian Road Safety Strategy 2007-2016* is nearing the end of its life. The Road Safety Advisory Council has commenced the development of the new *Towards Zero – Tasmanian Road Safety Strategy 2017-2026* which will provide the strategic direction for road safety in Tasmania for the next 10 years.

The Towards Zero Strategy will be a very important plan for Tasmania. To ensure a significant reduction in road trauma over the next 10 years, the Strategy will consider crash analysis, independent research, best practice and the outcome of consultation with stakeholders and the Tasmanian community. It will also be based on a four pronged Safe System approach which will encompass safe road users, safe roads and roadsides, safe speeds and safe vehicles.

With road safety a shared responsibility, the development of the Towards Zero Strategy provides an opportunity for everyone to discuss road safety issues and put forward ideas and innovative strategies to achieve the ultimate vision of zero fatalities and serious injuries on Tasmanian roads.

As a valued stakeholder in road safety, your input into the Towards Zero Strategy is very important. I therefore invite representatives from your organisation to attend a forum on one of the below dates. Representatives from RSAC including myself and road safety expert, Professor Ian Johnston, will be in attendance at these forums.

Region	Venue	Date	Time	Who
South	Rydges Hotel 393 Argyle Street North Hobart	Monday, 16 November 2015	9-11am	Stakeholders only
West	West Coast Council Chambers 11 Sticht Street Queenstown	Thursday, 19 November 2015	6-8pm	Stakeholders and community members
North West	The Burnie Club 40 Queen Street Burnie	Tuesday, 8 December 2015	9-11am	Stakeholders only
North	The Tramsheds Function Centre 4 Invermay Road Launceston	Wednesday, 9 December 2015	9-11am	Stakeholders only
East	Bayside Inn 4 Cecilia Street St Helens	Thursday, 10 December 2015	6-8pm	Stakeholders and community members

Please note that this invite has also been forwarded to the Mayor of your municipality.

If your organisation wishes to be involved, please email details of your representative(s) and which forum they will be attending to towardszero@stategrowth.tas.gov.au at least two weeks prior to the forum date.

Prior to the forums I would urge you to begin consulting within your organisation and with your members about road safety. To support this, a consultation framework is enclosed that provides information about road safety issues in Tasmania, the Safe System approach, the Toward Zero Strategy's development process, and potential questions to be considered prior to the forums.

Further information regarding the development of the Towards Zero Strategy can be found at www.towardszero.tas.gov.au.

I strongly encourage you to support road safety and assist us in working 'Towards Zero'.

Yours sincerely



JIM COX
CHAIR
ROAD SAFETY ADVISORY COUNCIL

9 October 2015

16.17 TOURISM COMMITTEE

Mayor Flint is currently Chair of the Tourism Committee, but would like Council to nominate another Councillor as Chair. Mayor Flint will remain on the Committee.

For Discussion

16.18 COMMUNITY GRANT – BOTHWELL SPEED SHEAR

A Community Grant Application has been received from Jamie Bryant to assist with the Bothwell Speed Shear. The last 3 years Council have contributed \$2000 towards the event. This year the Speed Shear will be held at Bushfest on Saturday 21st November. Jamie hopes to hold a Sports Shear Event at Bushfest next year.

For Decision



CENTRAL HIGHLANDS COUNCIL COMMUNITY GRANTS PROGRAM APPLICATION FORM

Please ensure you have read and understand the Program Guidelines prior to completing this form.

1. APPLICATION & ORGANISATION DETAILS

Name of Project: *Bothwell Speed Shear*

Amount of Grant Requested: *\$2000 was received in 2012, 2013 & 2014.*

Estimated Total Project Cost:

Applicant Organisation: *Bothwell Speed Shear*

Contact Person's Name: *Jamie Bryant*

Contact Details
Address: *9 Michael St, Bothwell*

Phone: (Business hours) *0437317903*

Mobile:

Fax:

Email:

Signature *[Signature]*

Name

Position in Organisation *Event organiser*

Date *9.10.15*

What is the overall aim/purpose of the applying organisation?

To provide a Speed Shear for shearers in the South of the State. As majority are held in North.

What is the membership of the organisation?

President

Secretary

Treasurer

Public Officer/s

2. ELIGIBILITY (see Community Grant Program Guidelines)**Is the organisation:**

- ☐ Representative of the interests of the Central Highlands Community
☐ Incorporated
☐ Not for Profit
☒ Unincorporated
☐ A Hall Committee

OR

- ☒ An individual community member

Have you previously received funding from the Central Highlands Council? (Please attached additional pages if required)

If yes; *Yes*

Name of Project: *Bothwell Speed Shear*

Date Grant received:

2012, 2013, 2014

Amount of Grant:

\$2000 each year

3. PROJECT DETAILS

Project Start Date:

Saturday 21st November

Project Completion Date:

Saturday 21st November

Project Objectives:

4. COMMUNITY SUPPORT

What level of community support is there for this project?

This will be the 4th year that we have held the Speed Shear. Increasing in competitor numbers & spectators each year.

Does the project involve the community in the delivery of the project?

Community members are encouraged to enter novelty events held through the event. eg. Quick throw (kids & adults) & Iron Man Events which prove very entertaining & popular.

How will the project benefit the community or provide a community resource?

A great event for the Community to be involved & ~~seen~~ an opportunity for local shearers to enter who usually do not attend other shearing shows.

5. COUNCIL SUPPORT

Are you requesting other Council support? E.g. parks, halls, telephones, fax, photocopying, computers, office accommodation, cleaning facilities, street closure.

If yes, please give details.

No

Are you requesting participation by Councillors or Council Staff?

If yes, please give details.

Councillors are encouraged to attend.

If your application is successful, how do you plan to acknowledge Council's contribution?

Through flyer distribution, brochures, announcements on the day & Open Trophy winner donated by Council.

6. FUTURE APPLICATIONS AND THE SUCCESS THIS PROJECT

Do you anticipate the organisation will apply for funding in future years?

Yes

How will you monitor/evaluate the success of this project?

This year we have decided to move the date forward as original date is too close to our baby's due date. Incorporating the Speed Shear with Bushfest it is hoped to boost visitor numbers for both events.

7. PROJECT BUDGET

Note: Amount from Council must not exceed half the project cost

Please provide a breakdown of the project expenditure and income:

Expenditure	Amount \$	Income	Amount \$
Capital		Guarantee	
Refurbishment		Government Grants	
Equipment		Trust/Foundations	
Premises Single's & t-shirts - competitors	\$1700	Donations from Business	
Vehicles		Special Funding	
Other: Purchase of prizes & prize money	\$5000	Gifts in Kind	
Other: Trophies	\$400	Other:	
Subtotal		Other	
Donation to Sports Shear	\$400	Subtotal	
Revenue		Anticipated	
Salaries (including super)		Government Grants	
Short-term contract fees		Central Highlands Grant	\$2000
Running costs		Trust/Foundations	
Production of information PR materials		Donations from Businesses	\$4500
Training staff/volunteers		Use of 2 trucks - Roll's Transport	
Travel		Special Fundraising	
		Gifts in kind (details)	
		sheep provided by Curringa farm	
Rent		Cash Reserves	
Reference materials		Other: Competitor	\$1000
Other:		Entries	
Subtotal		Subtotal	
TOTAL Approx	\$7500	TOTAL	\$7500

17.0 SUPPLEMENTARY AGENDA ITEMS

Moved **Clr**

Seconded **Clr**

THAT Council consider the matters on the Supplementary Agenda.

18.0 CLOSURE
